

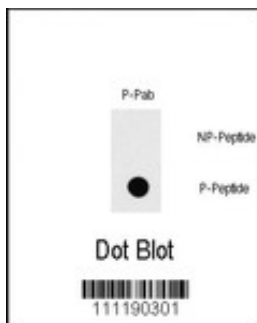
## Phospho-MYC-S373 Antibody

### Peptide Affinity Purified Rabbit Polyclonal Antibody (Pab)

Catalog #	Applications	Reactivity	Accessions
AP3326a	DB,E	H	<a href="#">P01106</a>
Concentration	Size	Isotype	Clone names
0.25 mg/ml	0.1 mg	Rabbit Ig	RB11190

#### Application data

**Calculated MW : 50434 Da**



Dot blot analysis of Phospho-MYC-S373 Pab (Cat.AP3326a) on nitrocellulose membrane. 50ng of Phospho-peptide or Non Phospho-peptide per dot were adsorbed. Antibody working concentrations are 0.5ug per ml.

Gene ID	Gene symbol
4609	MYC

#### Other names

MYC; BHLHE39; Myc proto-oncogene protein; Class E basic helix-loop-helix protein 39; Proto-oncogene c-Myc; Transcription factor p64

#### Target/specificity

This Phospho-MYC-S373 antibody is generated from rabbits immunized with a KLH conjugated synthetic phosphopeptide corresponding to amino acid residues surrounding S373 of human MYC.

#### Application notes

The suggested dilution is:  
 ELISA ~1:1,000  
 Dot Blot ~1:100~500

#### Format

Purified polyclonal antibody supplied in PBS with 0.09% (W/V) sodium azide. This antibody is first purified by protein A affinity chromatography. Then, the antibody fraction is peptide affinity purified in a 2-step procedure with peptides. The antibody is eluted with high and low pH buffers and neutralized immediately, followed by dialysis against PBS.

#### Storage

Maintain refrigerated at 2-8 deg C for up to 6 months. For long term storage store at -20 deg C in small

aliquots to prevent freeze-thaw cycles.

---

## Precautions

Phospho-MYC-S373 Antibody is for research use only and not for use in diagnostic or therapeutic procedures.

---

## Background

MYC participates in the regulation of gene transcription. It binds DNA both in a non-specific manner and also specifically to recognize the core sequence 5'-CAC[GA]TG-3'. This protein appears to activate the transcription of growth-related genes. Overexpression of MYC is implicated in the etiology of a variety of hematopoietic tumors. A chromosomal aberration involving MYC may be a cause of a form of B-cell chronic lymphocytic leukemia.

---

## References

Qi, Y., et al., Nature 431(7009):712-717 (2004). Wilda, M., et al., Genes Chromosomes Cancer 41(2):178-182 (2004). Dom, et al., Oncogene 23(44):7378-7390 (2004). Pap, T., et al., Arthritis Rheum. 50(9):2794-2802 (2004). Ozawa, N., et al., Endocrinology 145(9):4244-4250 (2004).

---

Provided below are standard protocols that you may find useful for product applications.

- [Western Blot](#)
- [Blocking Peptides](#)
- [Dot Blot](#)
- [Immunohistochemistry](#)
- [Immunofluorescence](#)
- [Immunoprecipitation](#)
- [Flow Cytometry](#)
- [Cell Culture](#)

Provided below are standard MSDS documents for our selection of products

- [Antibodies](#)
- [cDNA](#)
- [Cell/Tissue Lysates](#)
- [Over Expression Lysate](#)
- [Recombinant Protein](#)
- [siRNA](#)
- [Synthetic Peptide](#)
- [Tissue Section](#)