

Monoclonal Antibody to Blood Group Antigen Lewis b - Purified

Catalog No.:	SM3092P
Quantity:	0.1 mg
Concentration:	1.0 mg/ml
Background:	Blood group antigens are generally defined as molecules formed by sequential addition of saccharides to the carbohydrate side chains of lipids and proteins detected on erythrocytes and certain epithelial cells. The A, B and H antigens are reported to undergo modulation during malignant cellular transformation. Blood group related antigens represent a group of carbohydrate determinants carried on both glycolipids and glycoproteins. They are usually mucin type, and are detected on erythrocytes, certain epithelial cells, and in secretions of certain individuals. Sixteen genetically and biosynthetically distinct but inter related specificities belong to this group of antigens, including A, B, H, Lewis A, Lewis B, Lewis X, Lewis Y, and precursor type 1 chain antigens.
Host / Isotype:	Mouse / IgG1
Clone:	2-25LE
Immunogen:	Mucin isolated by size exclusion chromatography from an ovarian cyst fluid (pure endocervical type according to the Fenoglio's classification).
Format:	State: Liquid purified Ig fraction (> 95% pure by SDS-PAGE). Purification: Affinity Chromatography on Protein A. Buffer System: PBS, pH 7.4, with 15 mM Sodium Azide as preservative.
Applications:	ELISA. Western blot. Immunohistochemistry on Paraffin Sections: 5 µg/ml for 30 min at RT. Staining of formalin-fixed tissues REQUIRES boiling tissue sections in 10mM citrate buffer, pH 6.0, for 10-20 minutes followed by cooling at RT for 20 min. Positive Control: Human colon CA. Other applications not tested. Optimal dilutions are dependent on conditions and should be determined by the user.
Specificity:	The antibody 2-25LE reacts with Lewis b blood group antigen, a carbohydrate determinant carried on both glycolipids and glycoproteins, detected on erythrocytes, certain epithelial cells, and in secretions of certain individuals. It does not react with the blood group H type 2 antigens or with Lewis A, Sialyl Lewis A, Lewis X, Sialyl Lewis X, Lewis Y, and Lewis C.
Species Reactivity:	Tested: Human.

For research and in vitro use only. Not for diagnostic or therapeutic work.

Material Safety Datasheets are available at www.acris-antibodies.com or on request.

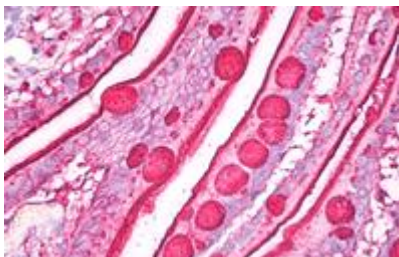
Antibody Hotline - Technical Questions - Antibody Location Service
 Free Call: 0800-2274746 (Germany only) - www.acris-antibodies.com

Storage: Store the antibody undiluted at 2-8°C for 6 months or (in aliquots) at -20°C for longer. Avoid freeze/thaw cycles.
Shelf life: one year from despatch.

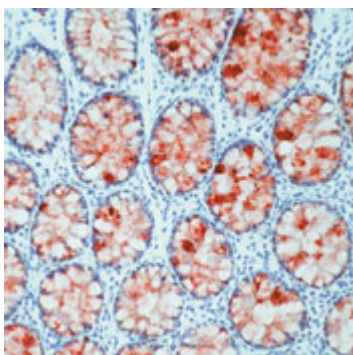
General References:

1. First International Workshop on Monoclonal Antibodies Against Red Blood Cell and Related Antigens. Paris, September 21-24, 1987. Vol. II: Other blood group systems.
2. Bara J, Gautier R, Le Pendu J, Oriol R.: Immunochemical characterization of mucins. Polypeptide (M1) and polysaccharide (A and Leb) antigens. *Biochem J.* 1988 Aug 15;254(1):185-93.
3. Torrado J, Correa P, Ruiz B, Bernardi P, Zavala D, Bara J.: Lewis antigen alterations in gastric cancer precursors. *Gastroenterology.* 1992 Feb;102(2):424-30.
4. Creuzot-Garcher C, Guerezider V, Assem M, Bron AM, Delannoy P, Bara J.: Alteration of sialyl Lewis epitope expression in pterygium. *Invest Ophthalmol Vis Sci.* 1999 Jul;40(8):1631-6.

Pictures:



Immunohistochemistry staining of human small intestine (paraffin sections) using anti-blood group Lewis b (clone 2-25LE).



Formalin-fixed, paraffin-embedded human colon stained with Lewis B Antibody (Cat#SM3092) using peroxidase-conjugate and AEC chromogen. Note cytoplasmic staining of epithelial cells.

For research and in vitro use only. Not for diagnostic or therapeutic work.

Material Safety Datasheets are available at www.acris-antibodies.com or on request.

Antibody Hotline - Technical Questions - Antibody Location Service
Free Call: 0800-2274746 (Germany only) - www.acris-antibodies.com