

Monoclonal Antibody to LYVE-1 - Aff. Purified

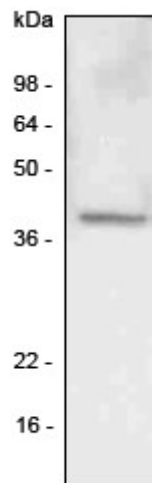
Alternate names:	CRSBP-1, CRSBP1, Cell surface retention sequence-binding protein 1, Extracellular link domain-containing protein 1, HAR, Hyaluronic acid receptor, LYVE1, Lymphatic vessel endothelial hyaluronic acid receptor 1, XLKD1
Catalog No.:	SM6007
Quantity:	0.1 ml
Concentration:	1.0 mg/ml
Background:	Lymphatic vascular endothelial hyaluronan receptor-1(LYVE-1), a selective marker of the lymphatic endothelium, is a surface endocytic receptor for hyaluronan (HA), which is an extracellular glycosaminoglycan involved in cell adhesion and migration. HA is widely expressed on leukocytes, dendritic cells, and tumor cell, and is identified by searching expressed sequence tag (EST) databases for sequences homologous (41%) with the metastasis related CD44 molecules.
Uniprot ID:	Q9Y5Y7
NCBI:	NP_006682.2
GeneID:	10894
Host / Isotype:	Mouse / IgG2b
Clone:	4G1
Immunogen:	Recombinant human LYVE-1 (25-235 aa) purified from E. coli
Format:	State: Liquid purified Ig fraction Purification: Protein G Affinity Chromatography Buffer System: PBS, pH 7.4 containing 0.01% Sodium azide as preservative
Applications:	ELISA. Western blot (1/500-1/1,000). Other applications not tested. Optimal dilutions are dependent on conditions and should be determined by the user.
Specificity:	This antibody recognises Lyve-1.
Species Reactivity:	Tested: Human
Storage:	Store the antibody undiluted at 2-8°C for one month or (in aliquots) at -20°C for longer. Avoid repeated freezing and thawing. Shelf life: one year from despatch.
General References:	1. Koukourakis MI. et al. (2006) J. Clin. Pathol. 58, 202-206 2. Chen L. et al. (2005) Invest. Ophthalmol Vis. Sci. 46, 4536-4540 3. Banerji S. et al. (1999) J. Cell Biol. 144, 789-801

For research and in vitro use only. Not for diagnostic or therapeutic work.

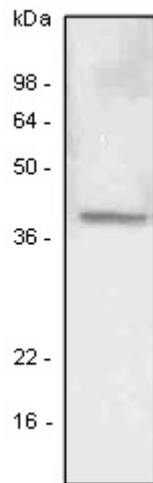
Material Safety Datasheets are available at www.acris-antibodies.com or on request.

Antibody Hotline - Technical Questions - Antibody Location Service
Free Call: 0800-2274746 (Germany only) - www.acris-antibodies.com

Pictures:



Western blot analysis: A549 (lung carcinoma) cell lysate was resolved by SDS-PAGE, transferred to PVDF membrane and probed with anti-human LYVE-1 antibody (1/500). Proteins were visualized using a goat anti-mouse secondary antibody conjugated to HRP and an ECL detection system.



A549 (lung carcinoma) cell lysate was resolved by SDS-PAGE, transferred to PVDF membrane and probed with anti-human LYVE-1 antibody (1:500). Proteins were visualized using a goat anti-mouse secondary antibody conjugated to HRP and an ECL detection system.

For research and in vitro use only. Not for diagnostic or therapeutic work.

Material Safety Datasheets are available at www.acris-antibodies.com or on request.

Antibody Hotline - Technical Questions - Antibody Location Service
Free Call: 0800-2274746 (Germany only) - www.acris-antibodies.com