

Purified anti-P2RY12 Antibody

Catalog# / 848002 / 100 µg
Size 848001 / 25 µg

Clone [S16007D](#) ([See other available formats](#))

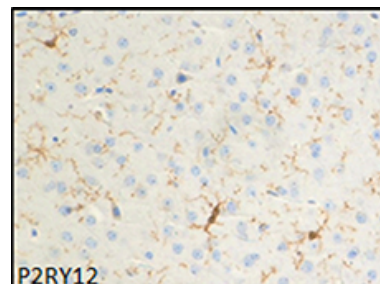
Other Names ADPG-R, BDPLT8, HORK3, P2T(AC), P2Y(12)R, P2Y(AC), P2Y(ADP), P2Y(cyc), P2Y12P2Y12 platelet ADP receptor, purinergic receptor P2RY12, purinergic receptor P2Y, G-protein coupled, 12

Isotype Rat IgG2b, κ

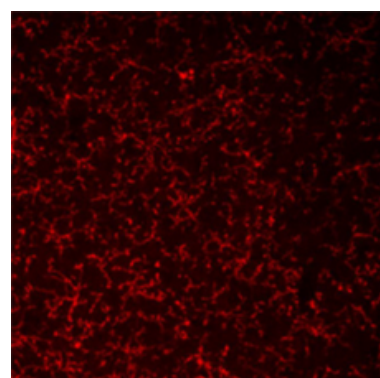
Ave. Rating ★★★★★ [0 reviews](#)

Description

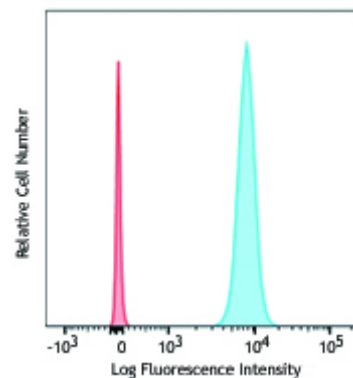
Purinergic Receptor P2Y (P2RY12) is a receptor for ADP and ATP coupled to G-proteins that inhibit the adenylyl cyclase second messenger system. P2RY12 is not activated by UDP and UTP. Required for normal platelet aggregation and blood coagulation. P2RY12 is a highly selective marker for microglia that specifically distinguishes these cells from other myeloid cells.



IHC staining of purified anti-P2RY12 antibody (clone S16007D) on formalin-fixed paraffin-embedded mouse brain tissue. Following antigen retrieval using Retrieve-All Antigen Unmasking System 2, the tissue was incubated with the primary antibody at 5 µg/mL overnight at 4°C. Rat IgG-biotin conjugate and DAB were used for detection, followed by hematoxylin counterstaining, according to the protocol provided. Image was captured using a 40X objective.



IF staining of purified anti-P2RY12 antibody (clone S16007D) on PFA-fixed frozen mouse brain tissue. Without antigen retrieval, the tissue was incubated with the primary antibody at 5 µg/mL overnight at 4°C. Rat IgG conjugated to Alexa Fluor® 594 was used for detection. The image was captured using a 40X objective.



Single cell suspension of mouse brain tissue was stained with purified anti-P2RY12 antibody (clone S16007D, blue histogram) or rat IgG isotype control (red histogram), followed by anti-rat antibody conjugated to APC for detection.

[See high resolution IHC-P/IF data...](#)

Reactivity	Mouse
Immunogen	Mouse P2RY12.
Formulation	Phosphate-buffered solution, pH 7.2, containing 0.09% sodium azide.
Preparation	The antibody was purified by affinity chromatography.
Concentration	0.5 mg/ml
Storage & Handling	The antibody solution should be stored undiluted between 2°C and 8°C.
Application	IHC-P - Quality tested FC, IF - Validated
Recommended Usage	Each lot of this antibody is quality control tested by formalin-fixed paraffin-embedded immunohistochemical staining. For immunohistochemistry, a concentration range of 5.0 - 10 µg/ml is suggested. For flow cytometric staining, a concentration range of 0.5 - 5.0 µg/ml is suggested. For immunofluorescence microscopy, a concentration range of 5.0 - 10 µg/ml is suggested. It is recommended that the reagent be titrated for optimal performance for each application.
RRID	AB_2650634 (BioLegend Cat. No. 848002) AB_2650633 (BioLegend Cat. No. 848001)

Antigen Details

Structure	P2RY12 is a 347 amino acid protein with a molecular mass of 39.8 kD.
Distribution	Tissue distribution: platelets, brain (microglia), lung, appendix, pituitary and adrenal glands.

Cellular distribution: cell membrane and cytosol.

Function	G-protein coupled receptor that inhibits the adenylyl cyclase second messenger system.
Ligand Receptor	ADP and ATP.
Antigen References	1. Orr AG, <i>et al.</i> 2009. <i>Nat. Neurosci.</i> 12(7):872-8.
Gene ID	70839
UniProt	View information about P2RY12 on UniProt.org

Documentation

 [Technical data sheet](#)

[Certificate of Analysis](#)

[Safety Data Sheet](#)

Related Protocols

[Cell Surface Immunofluorescence Staining Protocol](#)

[Immunofluorescence Microscopy Protocol](#)

[Immunohistochemistry Protocol for Paraffin-Embedded Sections](#)

Related FAQs

There are no FAQs for this product.

Related Categories

[NeuroscienceProducts](#) > [Neuroscience Cell Markers](#) > [Cellular Marker Antibodies](#)

[NeuroscienceProducts](#) > [Neuroinflammation](#) > [Neuroinflammation Antibodies](#)

For research use only. Not for diagnostic use. Not for resale. BioLegend will not be held responsible for patent infringement or other violations that may occur with the use of our products.

*These products may be covered by one or more Limited Use Label Licenses (see the BioLegend Catalog or our website, www.biolegend.com/ordering#license). BioLegend products may not be transferred to third parties, resold, modified for resale, or used to manufacture commercial products, reverse engineer functionally similar materials, or to provide a service to third parties without written approval of BioLegend. By use of these products you accept the terms and conditions of all applicable Limited Use Label Licenses. Unless otherwise indicated, these products are for research use only and are not intended for human or animal diagnostic, therapeutic or commercial use.

BioLegend Inc., 9727 Pacific Heights Blvd, San Diego, CA 92121 www.biolegend.com
Toll-Free Phone: 1-877-Bio-Legend (246-5343) Phone: (858) 768-5800 Fax: (877) 455-9587