

# DATASHEET

## Beta Amyloid, 1-16 (6E10) Monoclonal Antibody, Purified *Exclusively Provided by Covance*

Catalog Number: SIG-39320

Available Size: 0.2 mL, 0.5 mL, 1.0 mL

### Description:

Beta Amyloid (A $\beta$ ) Monoclonal Antibody, 6E10  
(Formerly Signet Laboratories Catalog Nos: 9320-02, 9320-05, 9320-10)

### Clone:

6E10

### Host:

Mouse

### IsoType:

IgG1

### Species Reactivity:

Human

### [Ab]:

1 mg/mL

**Covance is the Exclusive Provider of this Antibody Product**

### Also Known As:

amyloid beta A4 protein; preA4; protease nexin-II; peptidase nexin-II; beta-amyloid peptide; alzheimer disease amyloid protein; cerebral vascular amyloid peptide

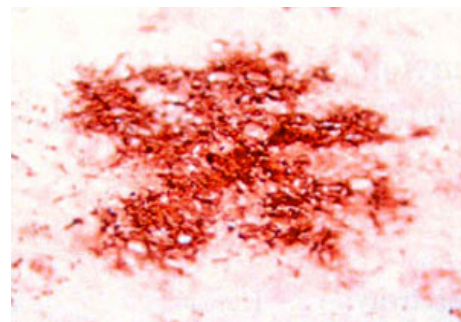
### Intended Use:

**\*\*Research Use Only (RUO)\*\***

This product is sold for laboratory research use only, not for human or in-vivo use.

### Form:

Protein G Purified Antibody (in PBS; no preservatives or carrier proteins)



6E10 immunostaining on brain section of Tg-SweArc transgenic mice.

### Specificity:

This antibody is reactive to amino acid residue 1-16 of beta amyloid. The epitope lies within amino acids 3-8 of beta amyloid (EFRHDS). Beta amyloid forms are deposited in the CNS of patients with Alzheimer's disease and Down's syndrome. Covance's beta amyloid antibody 6E10 reacts to the abnormally processed isoforms, as well as precursor forms.

### Uses:

This antibody is effective in immunoblotting (WB), immunohistochemistry (IHC), immunoprecipitation (IP), and ELISA.

### Suggested Working Dilution:

The optimal working dilution should be determined for each specific assay condition.

- **WB:** 1:1,000-1:2,000
- **IHC:**

Tissue Sections: Formalin-fixed human paraffin-embedded brain sections, frozen brain sections

Pretreatment: Formic acid (70%) for 10-30 minutes at room temperature

### Notes:

Expected MW: APP = ~100kDa, sAPPalpha = ~100kDa, Beta Amyloid = 4kDa

See reverse side for additional information

Page 1 of 2

Antibody Products: +1.800.223.0796 • +1.781.915.0990

Email: ab.products@covance.com www.covance.com

**COVANCE**

**Storage:**

Store at -20°C or below. Upon initial thawing, apportion into working aliquots and store at -20°C or below. Avoid repeated freeze-thaw cycles to prevent denaturing the antibody. Do not store in frost-free freezers.

**References:**

Thakker DR, et al. Intracerebroventricular amyloid-beta antibodies reduce cerebral amyloid angiopathy and associated micro-hemorrhages in aged Tg2576 mice. *Proc Natl Acad Sci USA Feb 25, 2009.*

Klyubin I, et al. Amyloid beta protein immunotherapy neutralizes Abeta oligomers that disrupt synaptic plasticity in vivo. *Nat Med 11(5):556-61, 2005.*

Oddo S, et al. Chronic nicotine administration exacerbates tau pathology in a transgenic model of Alzheimer's disease. *PNAS 102(8):3046-51, 2005.*

Fratta P, et al. Mutant ubiquitin UBB+1 is accumulated in sporadic inclusion-body myositis muscle fibers. *Neurology 63:1114-1117, 2004.*

Funamoto S, et al. Truncated carboxyl-terminal fragments of beta-Amyloid precursor protein are processed to Amyloid beta-proteins 40 and 42. *Biochem 43:13523-13540, 2004.*

Herzig M, et al. Abeta is targeted to the vasculature in a mouse model of hereditary cerebral hemorrhage with amyloidosis. *Nat. Neuro. 7(9):954-959, 2004.*

**Warranty/Conditions:**

Covance products may not be resold or modified for resale without prior written approval. All sales are subject to Covance Antibody Products Terms and Conditions of Sale.

**Datasheet Revision Date:**

11/6/2011

**Related Products:**

- Colorimetric BetaMark™ Beta-Amyloid x-42 ELISA Kit Catalog Number SIG-38956
- Beta Amyloid, 1-16 (6E10) Monoclonal Antibody *Exclusively Provided by Covance* Catalog Number SIG-39300
- BetaMark™ Beta-Amyloid x-40 Chemiluminescent ELISA Kit Catalog Number SIG-38950
- BetaMark™ Beta-Amyloid x-42 Chemiluminescent ELISA Kit Catalog Number SIG-38952
- Colorimetric BetaMark™ Beta-Amyloid x-40 ELISA Kit Catalog Number SIG-38954