

ABRO Antibody

Rabbit Polyclonal

Antigen Affinity Purified

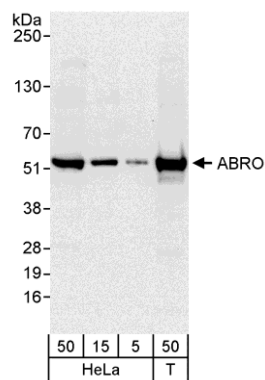
Catalog No. A301-255A-M

Protein ID NP_115558.3

Gene ID 23172



APPLICATIONS	WB, IP
REACTIVITY TESTED	Human
PRESUMED REACTIVITY	Based on 100% sequence identity, this antibody is predicted to react with Dog, Orangutan, Rhesus Monkey, Gorilla, Chimpanzee, White-tufted-ear marmoset, Crab-eating macaque, Small-eared galago, Thirteen-lined ground squirrel and Northern white-cheeked gibbon.
ISOTYPE	IgG
AMOUNT	100 µl (10 blots)
STORAGE/SHELF LIFE	2 - 8° C / 1 year from date of receipt
PHYSICAL STATE	Liquid
BUFFER	Tris-buffered Saline with 0.1% BSA containing 0.09% Sodium Azide
ORIGIN	USA
PRODUCTION PROCEDURES	Antibody was affinity purified using an epitope specific to ABRO immobilized on solid support. The epitope recognized by A301-255A-M maps to a region between residue 350 and 390 of human abraxas brother 1 using the numbering given in entry NP_115558.3 (GeneID 23172).
APPLICATIONS	Centrifuge tube to remove product from lid. Optimal working dilutions should be determined experimentally by the investigator. Prepare working dilution immediately before use. Western Blot 1:1000 Immunoprecipitation The antibody contained within A301-255A-M has been qualified for use in immunoprecipitation; however, we recommend using the alternative formulation of this antibody found as product A301-255A.
ADDITIONAL INFO	http://www.bethyl.com/product/A301-255A-M Use the link above to view SDS, a current list of citations, and other product specific information.



Detection of Human ABRO by Western Blot. *Samples:* Whole cell lysate from HeLa (5, 15, and 50 µg) and 293T (T; 50 µg) cells. *Antibody:* Affinity purified rabbit anti-ABRO antibody A301-255A-M used at 1:1000. *Detection:* Chemiluminescence with an exposure time of 10 seconds.