

# BMI1 IHC Antibody

Rabbit Polyclonal

Antigen Affinity Purified

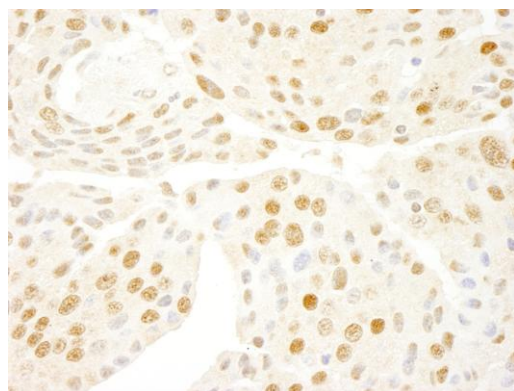
Catalog No. IHC-00606

Protein ID NP\_005171.4

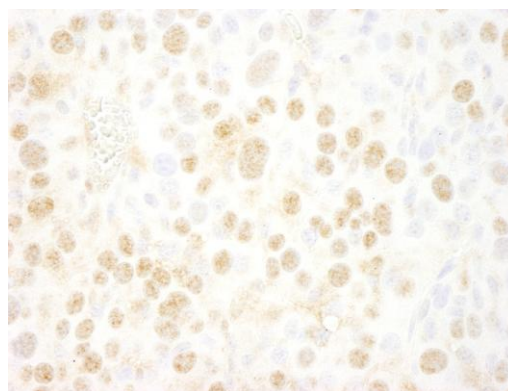
Gene ID 648



|                              |  |
|------------------------------|--|
| <b>APPLICATIONS</b>          | IHC-P, IF  |
| <b>REACTIVITY TESTED</b>     | Human and mouse. Other species have not been tested.   |
| <b>PRESUMED REACTIVITY</b>   | Based on 100% sequence identity, this antibody is predicted to react with Rat, X. tropicalis, Chicken, Bovine, Dog, Horse, Rabbit, Guinea pig_10141, Pig, Panda, Orangutan, Rhesus Monkey, Gorilla, Chimpanzee, Duckbill platypus, Tasmanian devil and White-tufted-ear marmoset.  |
| <b>ISOTYPE</b>               | IgG  |
| <b>AMOUNT</b>                | 0.1 ml   |
| <b>STORAGE/SHELF LIFE</b>    | 2 - 8° C / 1 year from date of receipt   |
| <b>PHYSICAL STATE</b>        | Liquid   |
| <b>BUFFER</b>                | Tris-buffered Saline containing 0.1% BSA with 0.09% Sodium Azide   |
| <b>ORIGIN</b>                | USA  |
| <b>PRODUCTION PROCEDURES</b> | <p>Antibody was affinity purified using an epitope specific to BMI1 immobilized on solid support.</p> <p>The epitope recognized by IHC-00606 maps to a region between residue 276 and 326 of human B lymphoma Mo-MLV insertion region 1 homolog using the numbering given in entry NP_005171.4 (GeneID 648).</p> <p>Immunoglobulin concentration was determined by extinction coefficient: absorbance at 280 nm of 1.4 equals 1.0 mg of IgG.</p> |
| <b>APPLICATIONS</b>          | <p>Centrifuge tube to remove product from lid. Optimal working dilutions should be determined experimentally by the investigator. Prepare working dilution immediately before use.</p> <p>Immunohistochemistry 1:100 - 1:500</p> <p>Immunofluorescence 1:50 - 1:500</p>  |
| <b>APPLICATION NOTES</b>     | <p>Epitope exposure is recommended.</p> <p>Epitope exposure with citrate buffer will enhance staining.</p> <p>Likely to work with frozen sections.</p> <p>In some cases, the antibody may be diluted further than indicated.</p>   |
| <b>IHC HUMAN CONTROLS</b>    | Breast Carcinoma, Linitis Plastica Stomach Cancer, Ovarian Carcinoma, Pancreatic Islet Cell Tumor  |
| <b>IHC MOUSE CONTROLS</b>    | Renal Cell Carcinoma   |
| <b>ADDITIONAL INFO</b>       | <p><a href="http://www.bethyl.com/product/IHC-00606">http://www.bethyl.com/product/IHC-00606</a></p> <p>Use the link above to view a current list of citations and other product specific information.</p>   |



**Detection of Human BMI1 by Immunohistochemistry.** *Sample:* FFPE section of human islet cell tumor. *Antibody:* Affinity purified rabbit anti-BMI1 (Cat. No. IHC-00606) used at a dilution of 1:250. *Detection:* DAB staining using Immunohistochemistry Accessory Kit (Cat. No. IHC-101).



**Detection of Mouse BMI1 by Immunohistochemistry.** *Sample:* FFPE section of mouse renal cell carcinoma. *Antibody:* Affinity purified rabbit anti-BMI1 (Cat. No. IHC-00606) used at a dilution of 1:250. *Detection:* DAB staining using Immunohistochemistry Accessory Kit (Cat. No. IHC-101).

## MATERIAL SAFETY DATA SHEET

|                         |   |
|-------------------------|---|
| CONTENTS                | This product contains Rabbit immunoglobulin G (IgG) protein in Tris-buffered Saline containing 0.1% BSA with 0.09% Sodium Azide.  |
| INGREDIENT DESCRIPTIONS | <p><b>NON-HAZARDOUS:</b></p> <p>Bovine Serum Albumin (BSA) – This product was derived from animals free of infectious or contagious diseases of U.S. Origin. No known toxicity for this biological material.</p> <p><b>HAZARDOUS:</b></p> <p>Sodium Azide (NaN<sub>3</sub>): Azide forms explosive chemical compounds with lead and copper plumbing. Care must be taken to wash waste down drains with large volumes of water. LD50 oral mouse 27 mg/kg. Wash all affected areas with large volumes of water and if swallowed consult your physician immediately.</p> |