

---

Product Manual

# OxiSelect™ Oxidative DNA Damage ELISA Kit (8-OHdG Quantitation), Trial Size

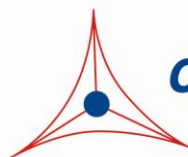
Catalog Number

STA-320-T

32 assays

**FOR RESEARCH USE ONLY**  
Not for use in diagnostic procedures

---



**CELL BIOLABS, INC.**  
*Creating Solutions for Life Science Research*

## **Introduction**

Free radicals and other reactive species are constantly generated *in vivo* and cause oxidative damage to biomolecules, a process held in check only by the existence of multiple antioxidant and repair systems as well as the replacement of damaged nucleic acids, proteins and lipids. DNA is probably the most biologically significant target of oxidative attack, and it is widely thought that continuous oxidative damage to DNA is a significant contributor to the age-related development of the major cancers, such as those of the colon, breast, rectum, and prostate. Among numerous types of oxidative DNA damage, the formation of 8-hydroxydeoxyguanosine (8-OHdG) is a ubiquitous marker of oxidative stress. 8-OHdG, one of the oxidative DNA damage byproducts, is physiologically formed and enhanced by chemical carcinogens. During the repair of damaged DNA *in vivo* by exonucleases, the resulting 8-OH-dG is excreted without further metabolism into urine.

The OxiSelect™ Oxidative DNA Damage ELISA Kit is a competitive enzyme immunoassay developed for rapid detection and quantitation of 8-OHdG in urine, serum, or other cell or tissue DNA samples. The quantity of 8-OHdG in unknown sample is determined by comparing its absorbance with that of a known 8-OHdG standard curve. The kit has an 8-OHdG detection sensitivity range of 100 pg/mL to 20 ng/mL. Each Trial Size DNA Damage ELISA Kit provides sufficient reagents to perform up to 32 assays, including standard curve and unknown samples.

## **Assay Principle**

The OxiSelect™ Oxidative DNA Damage ELISA kit is a competitive ELISA for the quantitative measurement of 8-OHdG. The unknown 8-OHdG samples or 8-OHdG standards are first added to an 8-OHdG/BSA conjugate preabsorbed microplate. After a brief incubation, an anti-8-OHdG monoclonal antibody is added, followed by an HRP conjugated secondary antibody. The 8-OHdG content in unknown samples is determined by comparison with predetermined 8-OHdG standard curve.

## **Related Products**

1. STA-321: OxiSelect™ DNA Double-Strand Break (DSB) Staining Kit
2. STA-324: OxiSelect™ Oxidative DNA Damage Quantitation Kit (AP sites)
3. STA-325: OxiSelect™ Oxidative RNA Damage ELISA Kit (8-OHG Quantitation)
4. STA-350: OxiSelect™ Comet Assay Kit (3-Well Slides), 15 Assays
5. STA-351: OxiSelect™ Comet Assay Kit (3-Well Slides), 75 Assays
6. STA-352: OxiSelect™ Comet Assay Slides (3-Well), 5 Slides
7. STA-353: OxiSelect™ Comet Assay Slides (3-Well), 25 Slides
8. STA-354: OxiSelect™ Comet Assay Control Cells
9. STA-355: OxiSelect™ 96-Well Comet Assay Kit
10. STA-356: OxiSelect™ 96-Well Comet Assay Slide

## **Kit Components**

### **Box 1 (shipped at room temperature)**

1. Protein Binding Strip Well Plate (Part No. 231001-T): One strip-well microplate containing 32 wells (8 x 4).
2. Anti-8-OHdG Antibody (Part No. 232002-T): One 5  $\mu$ L vial of anti-8-OHdG.
3. Secondary Antibody, HRP Conjugate (Part No. 10902): One 50  $\mu$ L vial.
4. Assay Diluent (Part No. 310804-T): One 20 mL bottle.
5. 10X Wash Buffer (Part No. 310806-T): One 30 mL bottle.
6. Substrate Solution (Part No. 310807-T): One 4 mL amber bottle.
7. Stop Solution (Part. No. 310808-T): One 4 mL bottle.
8. 8-OHdG Standard (Part No. 232003-T): One 30  $\mu$ L vial of 2  $\mu$ g/mL 8-OHdG in 1X PBS, 0.1% BSA.

### **Box 2 (shipped on blue ice packs)**

1. 8-OHdG Conjugate (Part No. 232001-T): One 5  $\mu$ L vial of 8-OHdG-BSA conjugate at 1.0 mg/mL in PBS.

## **Materials Not Supplied**

1. 8-OHdG samples such as serum, plasma, urine, or DNA extracted from cells or tissues
2. DNA Extraction Kit
3. Sodium Acetate, pH 5.2
4. Tris Buffer, pH7.5
5. Nuclease P1, Alkaline Phosphatase
6. 10  $\mu$ L to 1000  $\mu$ L adjustable single channel micropipettes with disposable tips
7. 50  $\mu$ L to 300  $\mu$ L adjustable multichannel micropipette with disposable tips
8. Multichannel micropipette reservoir
9. Microplate reader capable of reading at 450 nm (620 nm as optional reference wave length)

## **Storage**

Upon receipt, aliquot and store the 8-OHdG Standard at -20°C and the 8-OHdG Conjugate at -80°C to avoid multiple freeze/thaw cycles. Store all other components at 4°C until their expiration dates.

## **Preparation of Reagents**

- 8-OHdG Coated Plate: Dilute the proper amount of 8-OHdG Conjugate (1 mg/mL) to **1  $\mu$ g/mL** in 1X PBS. Add 100  $\mu$ L of the **1  $\mu$ g/mL** 8-OHdG Conjugate to each well and incubate

overnight at 4°C. Remove the 8-OHdG coating solution and wash once with dH<sub>2</sub>O. Blot plate on paper towels to remove excess fluid. Add 200 µL of Assay Diluent to each well and block for 1 hr at room temperature. Transfer the plate to 4°C and remove the Assay Diluent immediately before use.

*Note: The 8-OHdG coated wells are not stable and should be used within 24 hrs after coating. Only coat the number of wells to be used immediately.*

- 1X Wash Buffer: Dilute the 10X Wash Buffer to 1X with deionized water. Stir to homogeneity.
- Anti-8-OHdG Antibody and Secondary Antibody: Immediately before use dilute the Anti-8-OHdG Antibody 1:500 and Secondary Antibody 1:1000 with Assay Diluent. Do not store diluted solutions.

## **Preparation of Standard Curve**

Prepare a dilution series of 8-OHdG standards in the concentration range of 0 ng/mL to 20 ng/mL by diluting the 8-OHdG Standard in Assay Diluent (Table 1).

Standard Tubes	8-OHdG Standard (µL)	Assay Diluent (µL)	8-OHdG (ng/mL)
1	10	990	20
2	500 of Tube #1	500	10
3	500 of Tube #2	500	5
4	500 of Tube #3	500	2.5
5	500 of Tube #4	500	1.25
6	500 of Tube #5	500	0.625
7	500 of Tube #6	500	0.313
8	500 of Tube #7	500	0.156
9	500 of Tube #8	500	0.078
10	0	500	0

**Table 1. Preparation of 8-OHdG Standards**

## **Preparation of Samples**

### **I. Urine, Plasma or Serum Samples**

Clear urine, plasma or serum samples can be diluted in Assay Diluent and used directly in the assay. Samples containing precipitates should be centrifuged at 3000 g for 10 minutes, or filtered through 0.45 µm filter, prior to use in the assay.

### **II. Cell or Tissue DNA Samples**

1. Extract DNA from cell or tissue samples by a desired method or commercial DNA Extraction kit.

2. Dissolve extracted DNA in water at 1-5 mg/mL.
3. Convert DNA sample to single-stranded DNA by incubating the sample at 95°C for 5 minutes and rapidly chilling on ice.
4. Digest DNA sample to nucleosides by incubating the denatured DNA with 5-20 units of nuclease P1 for 2 hrs at 37°C in a final concentration of 20 mM Sodium Acetate, pH 5.2, followed by treatment of 5-10 units of alkaline phosphatase for 1 hr at 37°C in a final concentration of 100 mM Tris, pH 7.5.
5. The reaction mixture is centrifuged for 5 minutes at 6000 g and the supernatant is used for the 8-OHdG ELISA assay.

### **Assay Protocol**

1. Prepare and mix all reagents thoroughly before use. Each 8-OHdG sample including unknown and standard should be assayed in duplicate. High content 8-OHdG urine or serum samples should be diluted at least 10-20 fold in Assay Diluent.
2. Add 50 µL of unknown sample or 8-OHdG standard to the wells of the 8-OHdG Conjugate coated plate. Incubate at room temperature for 10 minutes on an orbital shaker.
3. Add 50 µL of the diluted anti-8-OHdG antibody to each well, incubate at room temperature for 1 hour on an orbital shaker.
4. Wash microwell strips 3 times with 250 µL 1X Wash Buffer per well with thorough aspiration between each wash. After the last wash, empty wells and tap microwell strips on absorbent pad or paper towel to remove excess 1X Wash Buffer.
5. Add 100 µL of the diluted Secondary Antibody-Enzyme Conjugate to all wells.
6. Incubate at room temperature for 1 hour on an orbital shaker.
7. Wash microwell strips 3 times according to step 4 above. Proceed immediately to the next step.
8. Warm Substrate Solution to room temperature. Add 100 µL of Substrate Solution to each well, including the blank wells. Incubate at room temperature on an orbital shaker. Actual incubation time may vary from 2-30 minutes.

*Note: Watch plate carefully; if color changes rapidly, the reaction may need to be stopped sooner to prevent saturation.*

9. Stop the enzyme reaction by adding 100 µL of Stop Solution into each well, including the blank wells. Results should be read immediately (color will fade over time).

10. Read absorbance of each microwell on a spectrophotometer using 450 nm as the primary wave length.

### **Example of Results**

The following figures demonstrate typical Oxidative DNA Damage ELISA results. One should use the data below for reference only. This data should not be used to interpret actual results.

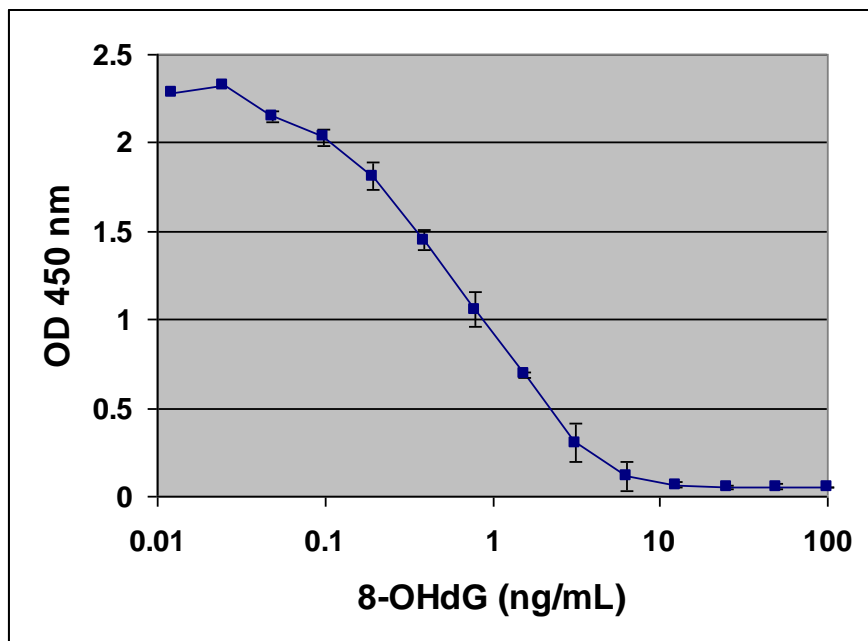


Figure 1: 8-OHdG ELISA Standard Curve.

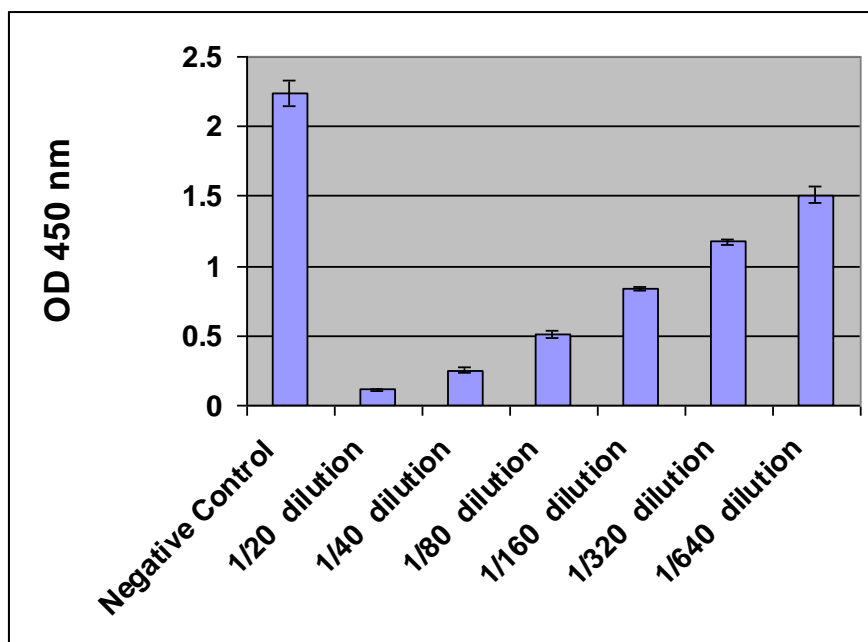


Figure 2: 8-OHdG level in human urine sample.

## **References**

1. Patel P. R, Bevan R. J, Mistry N and Lunec J. (2007) *J. Free Radic Biol Med.* **42**, 552-558.
2. Shen J, Deininger P, Hunt J. D, and Zhao H. (2007) *Cancer* **109**, 574-580.
3. Wu L. L, Chiou C. C, Chang P. Y and Wu J. T. (2004) *Clin Chim Acta.* **339**, 1-9.

## **Recent Product Citations**

1. Weaver, A. C. et al. (2014). Efficacy of Dietary Spray Dried Plasma Protein to Mitigate the Negative Effects on Performance of Pigs Fed Diets with Corn Naturally Contaminated with Multiple Mycotoxins. *J Anim Sci.* **9**:3878-3886.
2. Mikula-Pietrasik, J. et al. (2014). Resveratrol Derivative, 3,3',4,4'-Tetrahydroxy-trans-Stilbene, Retards Senescence of Mesothelial Cells via Hormetic-Like Prooxidative Mechanism. *J Gerontol A Biol Sci Med Sci.* 10.1093/gerona/glu172.
3. Changou, C. A. et al. (2014). Arginine Starvation-Associated Atypical Cellular Death Involves Mitochondrial Dysfunction, Nuclear DNA Leakage, and Chromatin Autophagy. *Proc Natl Acad Sci U S A.* **111**:14147-14152.
4. Chung, K.W. et al. (2014). Molecular Insights into SIRT1 Protection Against UVB-Induced Skin Fibroblast Senescence by Suppression of Oxidative Stress and p53 Acetylation. *J Gerontol A Biol Sci Med Sci.* 10.1093/gerona/glu137.
5. Singh, B. et al. (2014). Resveratrol Inhibits Estrogen-Induced Breast Carcinogenesis Through Induction of NRF2-Mediated Protective Pathways. *Carcinogenesis.* 10.1093/carcin/bgu120.
6. Jitschin, R. et al. (2014). Mitochondrial metabolism contributes to oxidative stress and reveals therapeutic targets in chronic lymphocytic leukemia. *Blood* **123**:2663-2672.
7. Moore, J. et al. (2013). Protection of Corneal Epithelial Stem Cells Prevents Ultraviolet A Damage during Corneal Collagen Cross-Linking Treatment for Keratoconus. *Br J Ophthalmol.* 10.1136/bjophthalmol-2013-303816.
8. Kalghatgi, S. et al. (2013). Disruption of Cell-Cell Junctions and Induction of Pathological Cytokines in the Retinal Pigment Epithelium of Light-Exposed Mice. *Science Translational Medicine.* **5**: 192ra85.
9. James, M.L. et al. (2013). VARA Attenuates Hyperoxia-Induced Impaired Alveolar Development and Lung Function in Newborn Mice. *Am J Physiol Lung Cell Mol Physiol.* **304**:L803-L812.
10. Ravikumar, P. et al. (2013). Klotho Protects Lung Epithelial Cells against Oxidative DNA Damage. *FASEB J.* **27**:722.3.
11. Singh, B. et al. (2013). MicroRNA-93 Regulates NRF2 Expression and is Associated with Breast Carcinogenesis. *Carcinogenesis.* 10.1093/carcin/bgt026.
12. Singh, B. et al. (2012). Superoxide Dismutase 3 is Induced by Antioxidants, Inhibits Oxidative DNA Damage and is Associated with Inhibition of Estrogen-Induced Breast Cancer. *Carcinogenesis.* **33**:2601-2610.

13. Mercer, J.R. et al. (2012). The Methyl Xanthine Caffeine Inhibits DNA Damage Signaling and Reactive Species and Reduces Atherosclerosis in ApoE<sup>-/-</sup> Mice. *Arterioscler Thromb Vasc Biol.* **32**: 2461-2467.
14. Schutt, F. et al. (2012). Moderately Reduced ATP Levels Promote Oxidative Stress and Debilitate Autophagic and Phagocytic Capacities in Human RPE Cells. *Invest. Ophthalmol. Vis. Sci.* **53**:5354-5361.
15. Tanabe, K. et al. (2012). Nicorandil as a Novel Therapy for Advanced Diabetic Nephropathy in the eNOS-Deficient Mouse. *Am J Physiol Renal Physiol.* **302**: F1151-F1160.
16. Tzortzaki, E.G. et al. (2012). Oxidative DNA Damage and Somatic Mutations: A Link to the Molecular Pathogenesis of Chronic Inflammatory Airway Diseases. *Chest.* **141**: 1243-1250.
17. Burnham, E.L. et al. (2012). Protandim Does Not Influence Alveolar Epithelial Permeability or Intrapulmonary Oxidative Stress in Human Subjects with Alcohol use Disorders. *Am J Physiol Lung Cell Mol Physiol.* **302**:L688-L699.
18. Singh, B. et al. (2012). Induction of NAD(P)H-quinone Oxidoreductase 1 by Antioxidants in Female ACI Rats is Associated with Decrease in Oxidative DNA Damage and Inhibition of Estrogen-induced Breast Cancer. *Carcinogenesis* **33**:156-163.
19. Pialoux, V. et al. (2011). Losartan Abolishes Oxidative Stress Induced by Intermittent Hypoxia in Humans. *J. Physiol.* **589**:5529-5537.
20. Nguyen, H.L. et al. (2011). Oxidative Stress and Prostate Cancer Progression are Elicited by Membrane-Type 1 Matrix Metalloproteinase. *Mol. Cancer Res.* **9**:1305-1318.
21. Thompson, C.M. et al. (2011). Investigation of the Mode of Action Underlying the Tumorigenic Response Induced in B6C3F1 Mice Exposed Orally to Hexavalent Chromium. *Toxicol. Sci.* **123**:58-70.
22. Barsony, J. et al. (2011). Osteoclast Response to Low Extracellular Sodium and the Mechanism of Hyponatremia-induced Bone Loss. *J. Biol. Chem.* **286**:10864-10875.
23. Li, M. et al. (2010). The ATM-p53 Pathway Suppresses Aneuploidy-Induced Tumorigenesis. *PNAS* **107**:14188-14193.
24. Hasegawa, T. et al. (2009). Suppression of Nitrosative and Oxidative Stress to Reduce Cardiac Allograft Vasculopathy. *Am. J. Physiol. Hear Circ. Physiol.* 10.1152/ajpheart.00498.2008.
25. Pialoux, V. et al. (2009). Effects of Exposure to Intermittent Hypoxia on Oxidative Stress and Acute Hypoxic Ventilatory Response in Humans. *Am. J. Respir. Crit. Care Med.* 10.1164/rccm.200905-0671OC.
26. Ksiazek, K. et al. (2008). Impaired Response to Oxidative Stress in Senescent Cells May lead to Accumulation of DNA Damage in Mesothelial Cells from Aged Donors. *Biochem. and Biophys. Res. Comm.* **373**:335-339.
27. Rao, M. et al. (2008). Mitochondrial DNA Injury and Mortality in Hemodialysis Patients. *J. Am. Soc. Nephrol.* **20**:189-196.
28. Ksiazek, K. et al. (2008). Vulnerability to Oxidative Stress and Different Patterns of Senescence in Human Peritoneal Mesothelial Cell Strains. *Am J. Physiol. Regulatory Integrative Comp. Physiol.* **296**:R374-R382.



## **Warranty**

These products are warranted to perform as described in their labeling and in Cell Biolabs literature when used in accordance with their instructions. THERE ARE NO WARRANTIES THAT EXTEND BEYOND THIS EXPRESSED WARRANTY AND CELL BIOLABS DISCLAIMS ANY IMPLIED WARRANTY OF MERCHANTABILITY OR WARRANTY OF FITNESS FOR PARTICULAR PURPOSE. CELL BIOLABS' sole obligation and purchaser's exclusive remedy for breach of this warranty shall be, at the option of CELL BIOLABS, to repair or replace the products. In no event shall CELL BIOLABS be liable for any proximate, incidental or consequential damages in connection with the products.

## **Contact Information**

Cell Biolabs, Inc.  
7758 Arjons Drive  
San Diego, CA 92126  
Worldwide: +1 858-271-6500  
USA Toll-Free: 1-888-CBL-0505  
E-mail: [tech@cellbiolabs.com](mailto:tech@cellbiolabs.com)  
[www.cellbiolabs.com](http://www.cellbiolabs.com)

©2013-2014: Cell Biolabs, Inc. - All rights reserved. No part of these works may be reproduced in any form without permissions in writing.