

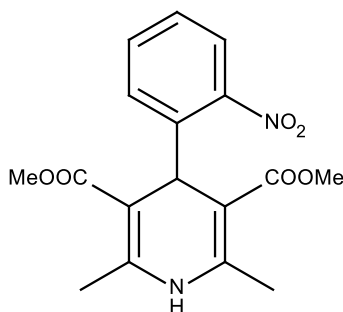
Catalog # 10-1116

Nifedipine

CAS# 21829-25-4

2,6-Dimethyl-4-(3-nitrophenyl)-1,4-dihydropyridine-3,5-dicarboxylic acid dimethyl ester

Lot # Z101303



Nifedipine is a clinically useful L-type calcium blocker.

- 1) Vater et al., (1972), (*Pharmacology of 4-(2'-nitrophenyl)-2,6-dimethyl-1,4-dihydropyridine-3,5-dicarboxylic acid dimethyl ester (Nifedipine, BAY a 1040)*; *Arzneimittelforschung* **22** 1

PHYSICAL DATA

Molecular Weight:	346.34
Molecular Formula:	C ₁₇ H ₁₈ N ₂ O ₆
Purity:	>98% by TLC (1% Methanol/methylene chloride; R _f = 0.3) NMR: (Conforms)
Solubility:	DMSO (at least 25 mg/ml)
Physical Description:	Yellow solid
Storage and Stability:	Store as supplied at room temperature for up to 1 year from the date of purchase. Protect from light. Make solutions fresh daily – compound may decompose in solution and/or prolonged exposure to light.

Materials provided by Focus Biomolecules are for laboratory research use only and are not intended for human or veterinary applications.