

**CD3 $\epsilon$  (Clone EP449E)**

Rabbit Monoclonal Antibody

Produced by Epitomics, Inc. Using Technology Licensed Under Patent no. 5,675,063

Cat. #RM-2109-S0, or -S (0.1ml, or 1.0ml Supernatant)

Cat. #RM-2109-R7 (7.0ml) (Ready-to-Use for Immunohistochemistry)

Cat. #RM-2109-RQ (12.0ml) (Ready-to-Use for Immunohistochemistry)

Please note this data sheet has been changed effective February 20, 2017

**Description:** CD3 consists of five different polypeptide chains (designated as gamma, delta, epsilon, zeta, and eta). The CD3 complex is closely associated at the lymphocyte cell surface with the T cell antigen receptor (TCR). It is involved in signal transduction to the T cell interior following antigen recognition. CD3 antigen is a highly specific marker for T cells, and is present in majority of T cell neoplasms.

**Mol. Wt. of Antigen:** 23kDa**Species Reactivity:** Human. Other species not tested.**Clone Designation:** EP449E**Ig Isotype:** Rabbit IgG

**Immunogen:** A synthetic peptide corresponding to residues in the cytoplasmic domain of human CD3 epsilon. The antibody does not cross-react with other subunits of CD3.

**Applications and Suggested Dilutions:**

- Immunohistology (Formalin/paraffin)
- Use Ab 1:125 for 20 min at RT using LP Detection Systems

Use Ab **1:125 to 1:250** for 20min at RT using the Quanto Detection Systems

\* (Staining of formalin fixed sections requires heat induced antigen retrieval using citrate buffer, pH 6.0 (cat. # AP-9003-XXX or TA-XXX-PM1X) heating to 98°C for 20 min using the Thermo Scientific PTModule)

The optimal dilution for a specific application should be determined by the investigator.

**Positive Control:** Tonsil**Cellular Localization:** Cell membrane**Supplied As:** Tissue culture supernatant with 0.09% sodium azide,

or

Prediluted antibody which is ready-to-use for staining of formalin-fixed, paraffin-embedded tissues.

**Storage and Stability:**

Store vial at 4°C. When stored at 2-8°C, this antibody is stable for 24 months.

**Suggested References:**

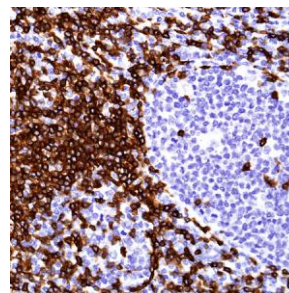
- Cibull ML; et al. Histopathology, 1989, 15(6):599-605.
- Mason DY; et al. Journal of Clinical Pathology, 1989, 42(11):1194-200.
- Mason DY; et al. Journal of Clinical Pathology, 1988, 41(2):121-7.

**Limitations and Warranty:**

Our products are intended FOR RESEARCH USE ONLY and are not approved for clinical diagnosis, drug use or therapeutic procedures. No products are to be construed as a recommendation for use in violation of any patents. We make no representations, warranties or assurances as to the accuracy or completeness of information provided on our data sheets and website. Our warranty is limited to the actual price paid for the product. Lab Vision is not liable for any property damage, personal injury, time or effort or economic loss caused by our products.

**Material Safety Data:**

This product is not licensed or approved for administration to humans or to animals other than the experimental animals. Standard Laboratory Practices should be followed when handling this material. The chemical, physical, and toxicological properties of this material have not been thoroughly investigated. Appropriate measures should be taken to avoid skin and eye contact, inhalation, and ingestion. The material contains 0.09% sodium azide as a preservative. Although the quantity of azide is very small, appropriate care should be taken when handling this material as indicated above. The National Institute of Occupational Safety and Health has issued a bulletin citing the potential explosion hazard due to the reaction of sodium azide with copper, lead, brass, or solder in the plumbing systems. Sodium azide forms hydrazoic acid in acidic conditions and should be discarded in a large volume of running water to avoid deposits forming in metal drainage pipes.



**CD3 $\epsilon$  (Clone EP449E)**

Rabbit Monoclonal Antibody

Produced by Epitomics, Inc. Using Technology Licensed Under Patent no. 5,675,063

Cat. #RM-2109-S0, or -S (0.1ml, or 1.0ml Supernatant)

Cat. #RM-2109-R7 (7.0ml) (Ready-to-Use for Immunohistochemistry)

Cat. #RM-2109-RQ (12.0ml) (Ready-to-Use for Immunohistochemistry)

**Please note this data sheet has been changed effective February 20, 2017**

Formalin-fixed, paraffin-embedded human tonsil stained with CD3 Epsilon (Cat. #RM-2109-S) using peroxidase-conjugate and DAB chromogen. Note membrane staining.

***For Research Use Only***

Richard-Allan Scientific  
Subsidiary of Thermo Fisher Scientific  
4481 Campus Drive  
Kalamazoo, MI 49008  
Phone: 1 (800) 522-7270  
[www.thermofisher.com/pathology](http://www.thermofisher.com/pathology)  
[begel.sdsdesk@thermofisher.com](mailto:begel.sdsdesk@thermofisher.com)



Thermo Shandon Limited  
Subsidiary of Thermo Fisher Scientific  
Tudor Road, Manor Park  
Runcorn, Cheshire WA7 1TA, UK  
Tel: +44 (0) 1928 534 050  
Fax: +44 (0) 1928 534 049