

# FGF-21 (26-47) (Human) - Antibody for Immunohistochemistry

Catalog#	Standard size	Price	Order
H-002-46	100 $\mu$ l	\$450.00	<input type="button" value="ORDER"/>

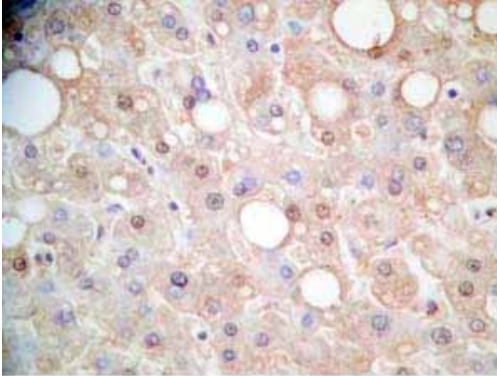
**Product description**

**More information**

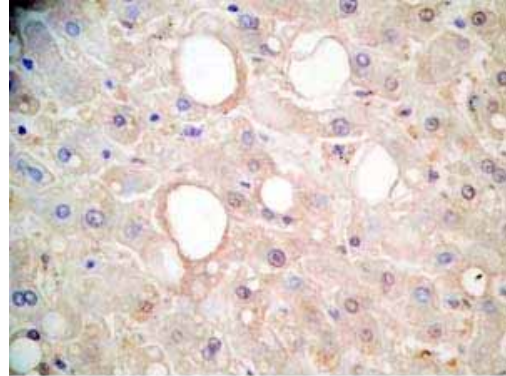
[FGF-21 - Research Abstracts, Antibody Stainings, Kits Standard Curves & Sequences](#)

[FGF-19 - Research Abstracts, Kits Standard Curves, Sequences, etc.](#)

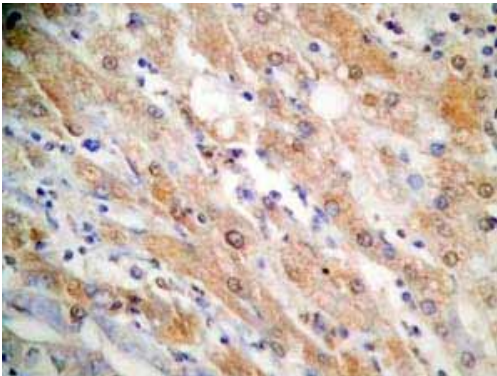
## Image



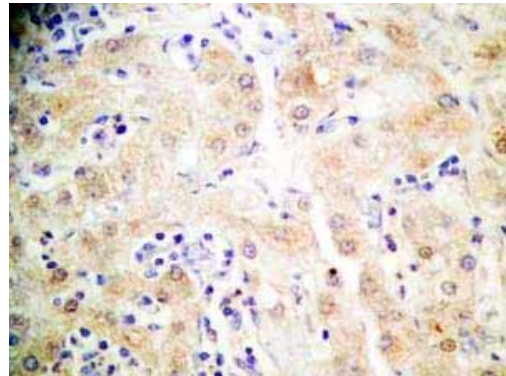
Human liver tissue was stained by Rabbit Anti-FGF-21 (26-47) (H) Antibody (Cat. No.: H-002-46)



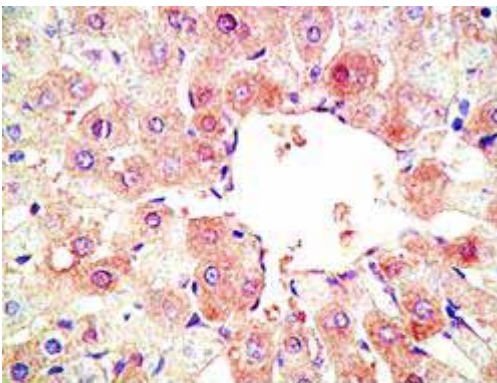
Human liver tissue was stained by Rabbit Anti-FGF-21 (26-47) (H) Antibody (Cat. No.: H-002-46)



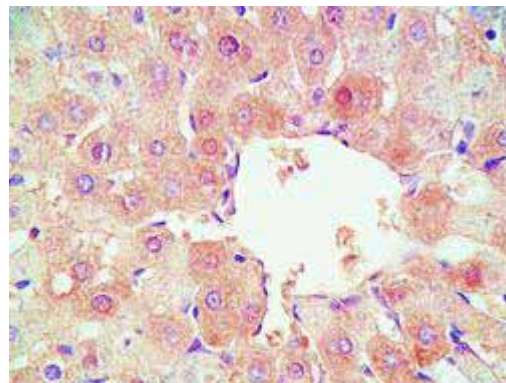
Human hepatocellular carcinoma tissue was stained by Rabbit anti-FGF-21 (26-47) (H) Antibody (Cat. No.: H-002-46)



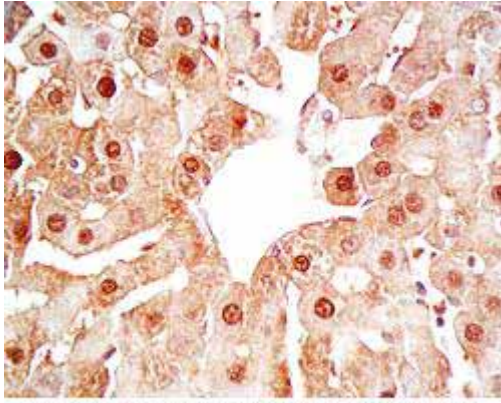
Human hepatocellular carcinoma tissue was stained by Rabbit Anti-FGF-21 (26-47) (H) (Cat. No.: H-002-46)



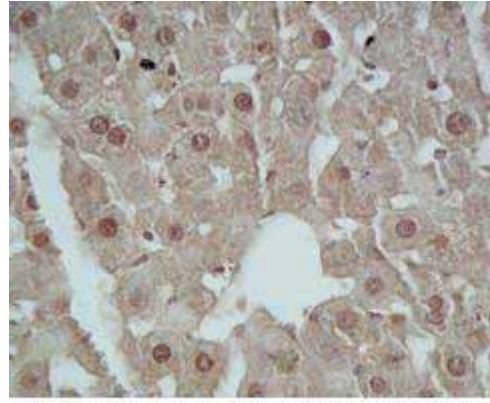
Mouse liver tissue was stained by Rabbit Anti-FGF-21 (26-47) (Human) Serum (Catalog No.: H-002-46)



Mouse liver tissue was stained by Rabbit Anti-FGF-21 (26-47) (Human) Serum (Catalog No.: H-002-46)



Mouse liver tissue was stained by Rabbit Anti-FGF-21 (26-47) (Human) Serum (Catalog No.: H-002-46)



Mouse liver tissue was stained by Rabbit Anti-FGF-21 (26-47) (Human) Serum (Catalog No.: H-002-46)

### Protocol for Immunohistochemistry

Tissue Sample	Human/Mouse liver tissue & Human hepatocellular carcinoma tissue
Fixative	10% Formalin
Embedding	Paraffin
Negative control	No primary antibody
Pretreatment	N/A
Blocking	3% H <sub>2</sub> O <sub>2</sub> , 2% Normal Goat Serum
Primary Antibody	Rabbit Anti-FGF-21 (26-47) (Human) Serum (Catalog No.:H-002-46)
Optimal Dilution	1:250-500 (over night at 4 °C)
Secondary Antibody	Goat Anti-Rabbit IgG, Biotinylated (1:400), 30 min
Amplification	Streptavidin-HRP (Vector), 1:400, 30 min
Detection system	HRP
Substrate	DAB (Sigma), 3 min
Counterstained	Hematoxylin, 30 Sec

### Western blot analysis of FGF-21 in rat liver tissue by Rabbit Anti-FGF-21 (26-47) Serum

(Catalog No.: H-002-46)



- Rat liver homogenate was run on 15% SDS-PAGE gel (reducing condition).
- Rabbit Anti-FGF-21 (26-47) (Human) Antiserum (Catalog No.: H-002-46)

### Western blot analysis

Sample	Rat liver tissue
Electrophoresis	15% SDS-PAGE gel, reducing condition
Denatured sample	100°C for 5 min
Positive control	recombinant human FGF-21
Blocking	1% BSA in TBST
Primary Antibody	Rabbit Anti-FGF-21 (26-47) (Human) Serum (Catalog No.:H-002-46)
Optimal Dilution	1:500 (overnight at cold room)
Secondary Antibody	Rabbit anti-Mouse IgG, HRP conjugated
Substrate	ECL

Positive Band ~ 23 KDa

<b>Catalog #</b>	H-002-46
<b>Standard Size</b>	100 µl
<b>Sequence</b>	Cys - Gln - Ala - His - Pro - Ile - Pro - Asp - Ser - Ser - Pro - Leu - Leu - Gln - Phe - Gly - Gly - Gln - Val - Arg - Gln - Arg
<b>Species</b>	Human
<b>Host</b>	Rabbit
<b>Reconstitution</b>	For consistent and reproducible results, reconstitute with 100µl of distilled water for the equivalent of undiluted antiserum immediately before use.
<b>Storage Condition</b>	For optimal results, use the antibody as soon as possible after reconstitution. Store in lyophilized form unless needed and reconstitute immediately before use. Once reconstituted, the antibody should be stable for a few days at -4°C. For storage up to a few months, prepare small aliquots after reconstitution and freeze at -20°C or -80°C. Repeated freeze thaw cycles should be strictly avoided.
<b>Content</b>	This vial contains 100µl of rabbit anti-FGF-21 (26-47) (Human) serum in the lyophilized form.
<b>Recommended Dilution Factor</b>	Direct ELISA: 1:6400 Immunohistochemistry (ABC): 1:250-500 Western blot: 1:350-500