

FGF-21 (98-124) (Human) - Antibody for Immunohistochemistry

Catalog#	Standard size	Price	Order
H-002-48	100 µl	\$450.00	<input type="button" value="ORDER"/>

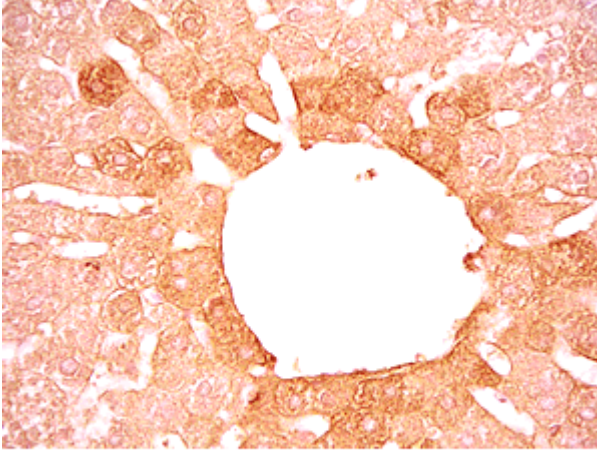
Product description

More information

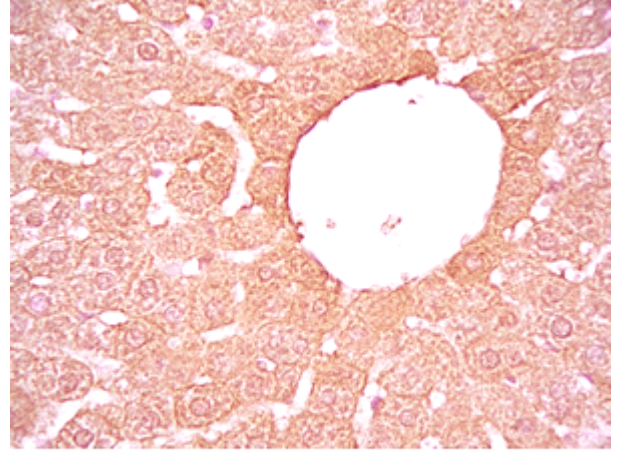
[FGF-21 - Research Abstracts, Antibody Stainings, Kits Standard Curves & Sequences](#)

[FGF-19 - Research Abstracts, Kits Standard Curves, Sequences, etc.](#)

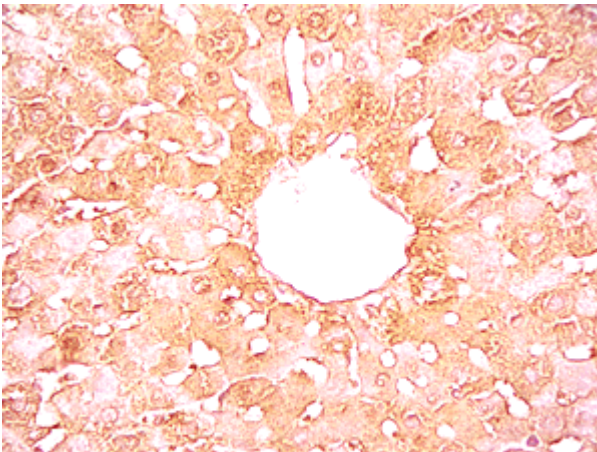
Image



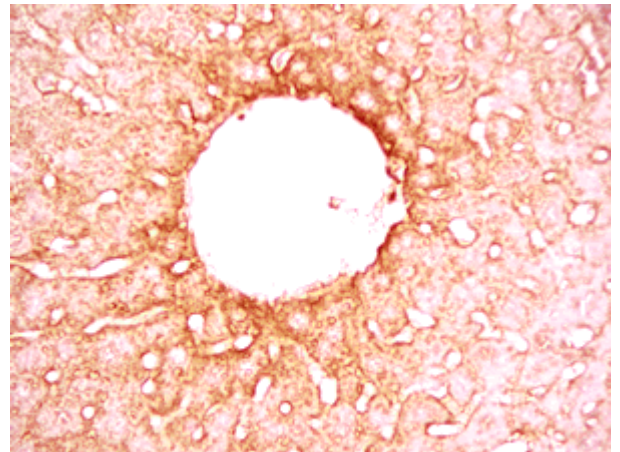
Rat liver tissue was stained by Rabbit Anti-FGF-21 (98-121) (Human) Serum (catalog No.: H-002-48)



Rat liver tissue was stained by Rabbit Anti-FGF-21 (98-121) (Human) Serum (catalog No.: H-002-48)



Mouse liver tissue was stained by Rabbit Anti-FGF-21 (98-121) (Human) Serum (catalog No.: H-002-48)



Mouse liver tissue was stained by Rabbit Anti-FGF-21 (98-121) (Human) Serum (catalog No.: H-002-48)

Protocol for Immunohistochemistry:

Tissue Sample	Rat & Mouse liver tissue
Fixative	10% formalin
Embedding	Paraffin
Negative Control	Pre-immuno serum
Pretreatment	Intact
Blocking	2% Normal Goat Serum
Primary Antibody	Rabbit Anti-FGF-21 (98-121) (Human) Serum (Catalog No.: H-002-48)
Optimal Dilution	1:250-500 (1hour at RT)
Secondary Antibody	Goat Anti-Rabbit IgG, Biotinylated (1:400, 30 min)
Amplification	ABC (Vector) (1:400, 30 min)
Detection System	HRP
Substrate	DAB (Sigma), 3 min
Counterstained	Hematoxylin, 30 Sec

Catalog # H-002-48

Standard Size 100 µl

Sequence	Thr - Ser - Arg - Phe - Leu - Cys - Gln - Arg - Pro - Asp - Gly - Ala - Leu - Tyr - Gly - Ser - Leu - His - Phe - Asp - Pro - Glu - Ala - Cys - Ser - phe - Arg
Species	Human
Host	Rabbit
Reconstitution	Reconstitute with 100 µl distill water.
Storage Condition	For optimal results, use the antibody as soon as possible after reconstitution. Store in lyophilized form unless needed and reconstitute immediately before use. Once reconstituted, the antibody should be stable for a few days at -4°C. For storage up to a few months, prepare small aliquots after reconstitution and freeze at -20°C or -80°C. Repeated freeze thaw cycles should be strictly avoided.
Recommended Dilution Factor	Direct ELISA: 1: 6400 Immunohistochemistry: 1: 250 ~ 500
Cross Reactivity	This antibody is crossreactivity with human FGF-21 (98-121). It was tested in immunohistochemistry in mouse and rat liver tissue.

Thursday 20 December, 2012

11986263 requests since Wednesday 05 April, 2006

Copyright © 2012 [PHOENIX PHARMACEUTICALS, INC.](#)