

FUS2 antibody

Catalog No: #22721

Orders: order@signalwayantibody.com

Support: tech@signalwayantibody.com

Description

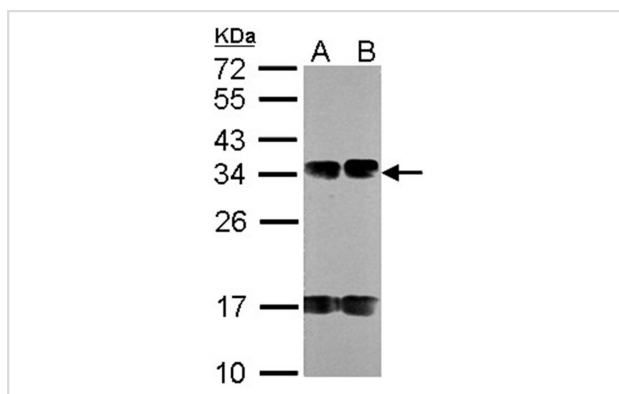
Product Name	FUS2 antibody
Host Species	Rabbit
Clonality	Polyclonal
Purification	Purified by antigen-affinity chromatography.
Applications	WB
Species Reactivity	Hu
Immunogen Type	Peptide
Immunogen Description	Synthetic peptide contain a sequence corresponding to a region within amino acids 246 and 308 of Human NAT6
Target Name	FUS2
Accession No.	NCBI Gene ID: 24142NCBI mRNA#: NM_012191NCBI Protein#: NP_036323
Formulation	Supplied in 0.1M Tris-buffered saline with 10% Glycerol (pH7.0). 0.01% Thimerosal was added as a preservative.
Storage	Store at -20°C for long term preservation (recommended). Store at 4°C for short term use.

Application Details

Predicted MW: 34kd

Western blotting: 1:500-1:3000

Images



Sample (30 ug of whole cell lysate)

A: A431

B: H1299

12% SDS PAGE

Primary antibody diluted at 1: 1000

Note: This product is for in vitro research use only and is not intended for use in humans or animals.