

4E-BP1 (Ab-64) Antibody

Catalog No: #33127



Package Size: #33127-1 50ul #33127-2 100ul

Orders: order@signalwayantibody.com

Support: tech@signalwayantibody.com

Description

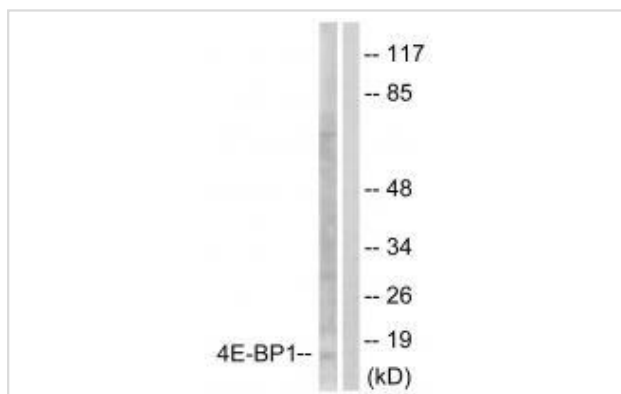
Product Name	4E-BP1 (Ab-64) Antibody
Host Species	Rabbit
Clonality	Polyclonal
Purification	The antibody was affinity-purified from rabbit antiserum by affinity-chromatography using epitope-specific immunogen.
Applications	WB IHC
Species Reactivity	Hu Ms Rt
Specificity	The antibody detects endogenous levels of total 4E-BP1 protein.
Immunogen Type	Peptide
Immunogen Description	Synthesized non-phosphopeptide derived from human 4E-BP1 around the phosphorylation site of serine 65 (R-N-S(p)-P-V).
Target Name	4E-BP1
Other Names	4EBP1; EIF4EBP1; P/OKCL6; PHAS-1;
Accession No.	Swiss-Prot: Q13541NCBI Gene ID: 1978
SDS-PAGE MW	15kd
Concentration	1.0mg/ml
Formulation	Rabbit IgG in phosphate buffered saline (without Mg ²⁺ and Ca ²⁺), pH 7.4, 150mM NaCl, 0.02% sodium azide and 50% glycerol.
Storage	Store at -20°C

Application Details

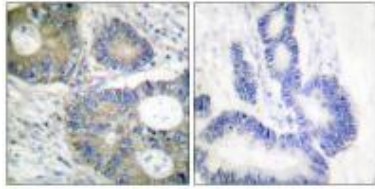
Western blotting: 1:500~1:3000

Immunohistochemistry: 1:50~1:100

Images



Western blot analysis of extracts from Jurkat cells, treated with Insulin (0.01U/ml, 15mins), using 4E-BP1 (Ab-64) antibody #33127.



Immunohistochemical analysis of paraffin-embedded human colon carcinoma tissue using 4E-BP1 (Ab-64) antibody #33127.

Background

Regulates eIF4E activity by preventing its assembly into the eIF4F complex: hypophosphorylated form competes with EIF4G1/EIF4G3 and strongly binds to EIF4E, leading to repress translation. Mediates the regulation of protein translation by hormones, growth factors and other stimuli that signal through the MAP kinase and mTORC1 pathways.

Anne-Claude Gingras, *Genes & Dev.*, Jun 1999; 13: 1422.

Guangming Liu, *J. Biol. Chem.*, Mar 2002; 277: 8810 - 8816.

Ya-Ping Jiang, *J. Biol. Chem.*, Mar 2001; 276: 10943 - 10951.

Note: This product is for in vitro research use only and is not intended for use in humans or animals.