

## HSF1 (Ab-142) Antibody

Catalog No: #33215



Package Size: #33215-1 50ul #33215-2 100ul

Orders: [order@signalwayantibody.com](mailto:order@signalwayantibody.com)Support: [tech@signalwayantibody.com](mailto:tech@signalwayantibody.com)

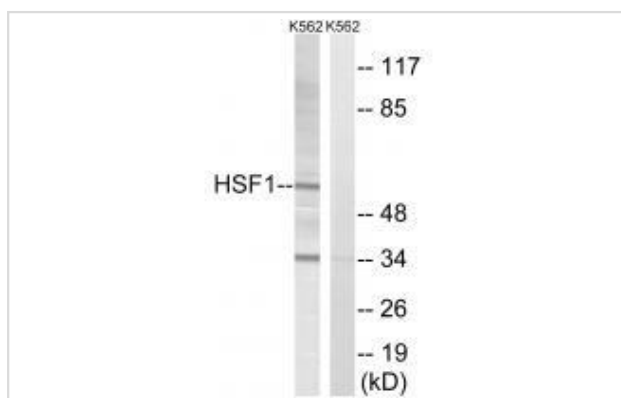
## Description

Product Name	HSF1 (Ab-142) Antibody
Host Species	Rabbit
Clonality	Polyclonal
Purification	The antibody was affinity-purified from rabbit antiserum by affinity-chromatography using epitope-specific immunogen.
Applications	WB
Species Reactivity	Hu
Specificity	The antibody detects endogenous levels of total HSF1 protein.
Immunogen Type	Peptide
Immunogen Description	Synthesized non-phosphopeptide derived from human HSF1 around the phosphorylation site of threonine 142 (L-L-T(p)-D-V).
Target Name	HSF1
Other Names	Heat shock factor protein 1; Heat shock transcription factor 1; HSF 1; HSTF 1; HSTF1
Accession No.	Swiss-Prot: Q00613NCBI Gene ID: 3297
SDS-PAGE MW	57kd
Concentration	1.0mg/ml
Formulation	Rabbit IgG in phosphate buffered saline (without Mg <sup>2+</sup> and Ca <sup>2+</sup> ), pH 7.4, 150mM NaCl, 0.02% sodium azide and 50% glycerol.
Storage	Store at -20°C

## Application Details

Western blotting: 1:500~1:3000

## Images



Western blot analysis of extracts from K562 cells, using HSF1 (Ab-142) antibody #33215.

## Background

---

DNA-binding protein that specifically binds heat shock promoter elements (HSE) and activates transcription. In higher eukaryotes, HSF is unable to bind to the HSE unless the cells are heat shocked.

Rabindran S.K., Proc. Natl. Acad. Sci. U.S.A. 88:6906-6910(1991).

Ota T., Nat. Genet. 36:40-45(2004).

Kalnine N., Submitted (MAY-2003) to the EMBL/GenBank/DDBJ databases.

---

Note: This product is for in vitro research use only and is not intended for use in humans or animals.