

Related Products:

Catalog#	Description	Size
3446-005-01	Cultrex <sup>®</sup> 3-D Culture Matrix <sup>™</sup> Laminin I	5 ml
3447-020-01	Cultrex <sup>®</sup> 3-D Culture Matrix <sup>™</sup> Collagen I	100 mg
3444-096-K	Cultrex <sup>®</sup> 3-D Culture Cell Proliferation Assay Core Kit	96 samples
3445-096-K	Cultrex <sup>®</sup> 3-D Culture BME Cell Proliferation Assay	96 samples
3446-096-K	Cultrex <sup>®</sup> 3-D Culture Laminin I Cell Proliferation Assay	96 samples
3447-096-K	Cultrex <sup>®</sup> 3-D Culture Collagen I Cell Proliferation Assay	96 samples
3448-020-K	Cultrex <sup>®</sup> 3-D Culture Cell Harvesting Kit	20 samples
3500-096-K	Cultrex <sup>®</sup> 3D Spheroid Cell Invasion Assay	96 samples
3510-096-K	Cultrex <sup>®</sup> 3D Spheroid Fluorometric Proliferation/Viability Assay	96 samples
3511-096-K	Cultrex <sup>®</sup> 3D Spheroid Colorimetric Proliferation/Viability Assay	96 samples



**3-D Culture Matrix<sup>™</sup>  
RGF BME,  
PathClear<sup>®</sup>**

Cat#: 3445-010-01  
Storage: ≤ -20°C  
(Manual Defrost)  
1-800-873-8443

# CULTREX<sup>®</sup> Product Data

For Research Use Only. Not For Use In Diagnostic Procedures

## Cultrex<sup>®</sup> 3-D Culture Matrix<sup>™</sup> Reduced Growth Factor Basement Membrane Extract, PathClear<sup>®</sup>

Catalog #: 3445-010-01      Size: 2 x 5 ml

**Description:** 3D Culture is a cell culture method that provides cells with the necessary structure and signaling cues to direct reconstruction of the tissue architecture, and these methods provide physiologically predictive in vitro models for evaluating development and disease. Normal cells assemble into organoids that structurally resemble their emanating tissues, exhibit a polarized morphology, undergo cell cycle regulation, and produce tissue-specific proteins<sup>1-6</sup>. While cancer cells assemble into tumor-like structures, lacking an organized architecture or cell cycle regulation and exhibiting tumor-specific markers depending on the extent of malignancy<sup>7-9</sup>.

To aid in the advancement of this technology, Trevigen has developed Cultrex<sup>®</sup> 3-D Culture Matrix<sup>™</sup> RGF BME which is the first Basement Membrane Extract produced and qualified specifically for use in 3D culture studies. The 3-D Culture Matrix<sup>™</sup> RGF BME provides the foundation for cells to grow in three dimensions allowing for the formation of structures in vitro. To provide the most standardized basement membrane extract for use in 3D cultures, a special process is employed to reduce growth factors and manufacture matrix at a standard concentration of approximately 15 mg/ml. This product is then evaluated in a 3D culture to validate efficacy.

**Specifications:**

Concentration: 14 - 16 mg/ml.  
Source: Murine Engelbreth-Holm-Swarm (EHS) tumor.  
Storage buffer: Dulbecco's Modified Eagle's medium without phenol red, with 10 µg/ml gentamicin sulfate.  
Storage/Stability: Product is stable for a minimum of 3 months from date of shipment when stored at -20 °C in a manual defrost freezer.  
**For optimal stability, store at -80 °C. Avoid freeze-thaw cycles.**

**Material Qualification:**

Functional assays:

- Tube formation assay - BME promotes formation of capillary-like structures by human (HBMVEC; HUVEC) or mouse (SVEC4-10) endothelial cells.
- 3D Culture: Basement Membrane Extract promotes differentiation of a human epithelial cell line derived from mammary gland (MCF-10A) or human prostate (PC-3) into acinar structures.

Sterility testing:

- **PathClear<sup>®</sup>** - Negative by PCR test for mycoplasma; 17 bacterial and virus strains typically included in mouse antibody production (MAP) testing, plus 13 additional murine infectious agents including LDEV, for a total of 31 organisms and viruses.
- No bacterial or fungal growth detected after incubation at 37 °C for 14 days following USP sterility testing guidelines.
- Endotoxin concentration ≤ 8 EU/ml by LAL assay.

© 2013 Trevigen, Inc. All Rights Reserved. Trevigen, Cultrex, CultreCoat and PathClear are registered trademarks, and 3-D Culture Matrix, DIVAA and CellSpere are trademarks of Trevigen, Inc. P8/15/13v1

## TREVIGEN<sup>®</sup>

8405 Helgerman Court, Gaithersburg, MD 20877 USA  
Voice: 1-800-TREVIGEN (1-800-873-8443) • 301-216-2800  
Fax: 301-560-4973 • e-mail: info@trevigen.com • www.trevigen.com

#### Gelling assay:

- BME gels in less than 30 minutes at 37°C, and maintains the gelled form in culture medium for a minimum of 14 days at 37°C.

#### 3D Culture Overview:

**Note: This procedure must be conducted in an aseptic environment, such as a laminar flow hood or clean room, using aseptic technique to prevent contamination. This protocol is based on Debnath et al.<sup>1</sup> It is provided as a well characterized example; different cell lines may require different cell culture conditions and incubation periods.**

1. Culture cells as recommended by cell supplier to establish a stable population at 37°C in a CO<sub>2</sub> incubator; growth media, growth factors, serum requirements, and incubation period may vary by cell type: e.g. MCF-10A (DMEM, 5% Horse Serum (HS), 20 ng/ml hEGF, 500 ng/ml Hydrocortisone, 100 ng/ml Cholera Toxin, 10 µg/ml Insulin, 1X Pen/Strep) and PC-3 (RPMI-1640, 10% HS, 5% Fetal Bovine Serum (FBS)).
2. Thaw 3-D Culture Matrix™ RGF BME at 2-8°C overnight.
3. Working on ice, add 250 µl of 3-D Culture Matrix™ RGF BME per well of a sterile 48 well plate, incubate the plate at 37°C for 30 minutes to promote gelling of matrix.
4. Working on ice, add 98 ml of growth media (as recommended by cell supplier and 2 ml of 3-D Culture Matrix™ RGF BME (final concentration of 2%) to a sterile container, and label this container "Assay Media," and swirl to mix. Any unused 3-D Culture Matrix™ RGF BME can be stored at 4°C up to one week or stored in working aliquots at -20°C in a manual defrost freezer.
5. Incubate Assay Media at 37°C for 30 minutes in preparation for cell dilution.
6. Harvest cells from culture, and dilute cells to 1 x 10<sup>4</sup> cells/ml in 24 ml of Assay Medium.
7. Add 500 µl of cell suspension to each well of the 48 well plate containing 3-D Culture Matrix™ RGF BME.
8. Incubate plate at 37°C in a CO<sub>2</sub> incubator overnight.
9. Each day, observe cell growth and structure formation via inverted microscope, and replace 48 well in a CO<sub>2</sub> incubator overnight at 37°C.
10. On day 4, carefully pipet off old media using a sterile serological pipette, and replace with new Assay Media. Repeat on day 8 and day 12.
11. When structures have grown to desired size, prepare cells for analysis (as recommended by manufacturer), and analyze structures. This point is dependent on cell line and growth conditions. In our qualification, MCF-10A cells are analyzed at 16 days, and PC-3 cells are analyzed at 10 to 12 days.

#### Recommendations for analysis:

12. To fix cells, incubate for 20 minutes in 2% formalin, 1X PBS at room temperature.
13. Cells may be analyzed in the plate on BME; they may be transferred to a microscope slide (very carefully); or they may be embedded in paraffin and sectioned.

#### References:

1. Debnath J, Muthuswamy SK, Brugge JS. 2003. Morphogenesis and oncogenesis of MCF-10A mammary epithelial acini grown in three-dimensional basement membrane cultures. *Methods*. Jul; **30**(3):256-68.
2. Webber MM, Bello D, Kleinman HK, and Hoffman MP. 1997. Acinar differentiation by non-malignant immortalized human prostate epithelial cells and its loss in malignant cells. *Carcinogenesis*. **18**(6): 1225-1231.
3. Fong CJ, Sherwood ER, Sutkowski DM, Abu-Jawdeh GM, Yokoo H, Bauer KD, Kozlowski JM, and Lee C. 1991. Reconstituted basement membrane promotes morphological and functional differentiation of primary human prostate epithelial cells. *Prostate*. **19**(3): 221-235.
4. Lang SH, Sharrard RM, Stark M, Villette JM, and Maitland NJ. 2001. Prostate epithelial cell lines form spheroids with evidence of glandular differentiation in three-dimensional Matrigel cultures. *Br J Cancer*. **85**(4): pp. 590-599.
5. Taub, M, Wang Y, Szczesny T, and Kleinman H. 1990. Epidermal growth factor or transforming growth factor β is required for kidney tubulogenesis in matrigel cultures in serum-free medium. *Proc. Natl. Acad. Sci. USA* **87**:4002-4006.

6. Kubota Y, Kleinman H, Martin G, and Lawley T. 1988. Role of laminin and basement membrane proteins in the morphological differentiation of human endothelial cells in capillary-like structures. *J. Cell Biol.* **107**:1589-1598.
7. Kenny, P.A., et al., 2007. The morphologies of breast cancer cell lines in three-dimensional assays correlate with their profiles of gene expression. *Mol Oncol*, **1**(1): p. 84-96.
8. Harma, V., et al., A 2010. Comprehensive Panel of Three-Dimensional Models for Studies of Prostate Cancer Growth, Invasion and Drug Responses. *PLoS ONE*, **5**(5): p. e10431.
9. Fridman, R., G. Giaccone, T. Kanemoto, G. Martin, A. Gazdar, and J. Mulshine. 1990. Reconstituted basement membrane (matrigel) and laminin can enhance the tumorigenicity and the drug resistance of small cell lung cancer cell lines. *Proc. Natl. Acad. Sci. USA* **87**:6698-6702.
10. Ponce M., Nomizu M, Delgado M, Kuratomi V, Hoffman M, Powell S, Yamada Y, Kleinman H, and Malinda K. 1999. Identification of endothelial cell binding sites on the laminin g1 chain. *Circ. Res.* **84**:688-694.
11. Benton, G., J. George, H.K. Kleinman, and I.P. Arnaoutova. 2009. Advancing Science and Technology Via 3D Culture on Basement Membrane Matrix. *J. Cell. Physiol.* **221**:18-25.
12. Benton G, Kleinman HK, George J, Arnaoutova I. 2011. Multiple uses of basement membrane matrix (BME/Matrigel) in vitro and in vivo with tumor cells. *Int. J. Cancer*. **128** (8); 1751-1757.

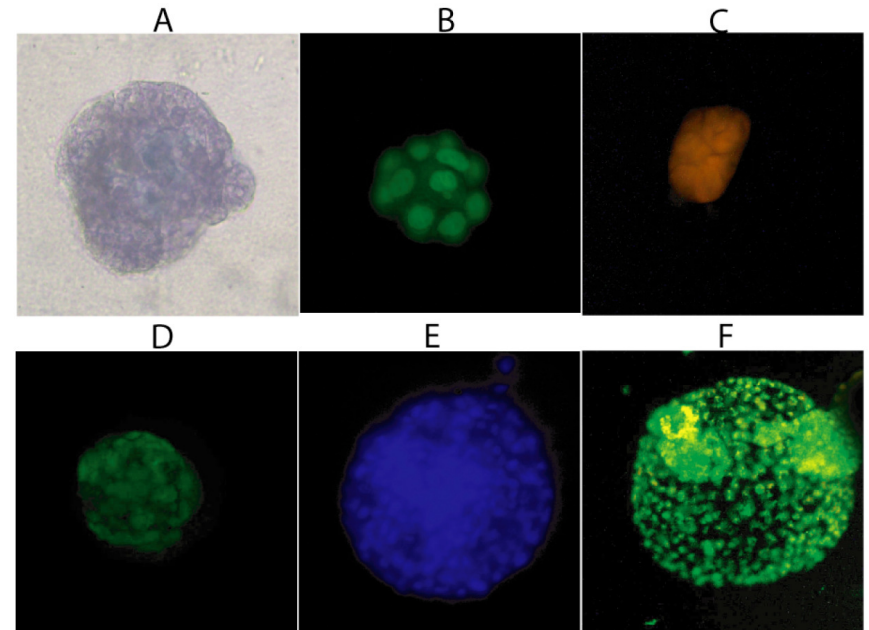


Figure 1. Three-Dimensional Cellular Structures. Staining of MCF-10A cells after sixteen days in 3-D Culture Matrix™ RGF BME with: A) Cell Staining Kit (structural), B) SYBR® Green (nuclear), and C) MitoShift™ (mitochondrial potential); and staining of PC-3 cells after twelve days in 3-D Culture Matrix™ RGF BME with: D) Calcein AM (cell viability), E) CPA dye 1 (nuclear) and F) Depsipher™ (mitochondrial potential).

SYBR® Green is a registered trademark of Molecular Probes, Eugene, OR.  
Depsipher and MitoShift are trademarks of Trevigen, Inc.