

ChIL Probe #AH001M-12 / AH001M-60

Manufactured date : 2021/5/11

Lot# : 20210511M

Expiration date : one year from manufactured date

Storage : Store at -20°C under sterile/dark condition. Prepare working dilution on day of use.

Buffer : Phosphate Buffered Saline (pH 7.4)

Volume : 12ul, 60ul

Usage : 1:100-1:200 in 0.5M NaCl/buffer of your choice

Antibody : AffiniPure Rat Anti-Mouse IgG (H+L)

Target: Mouse

Host: Rat

Antibody Format: Whole IgG

Specificity: IgG (H+L)

Minimal Cross Reactivity: Human, Bovine, Horse, Rabbit, Rat Serum Proteins

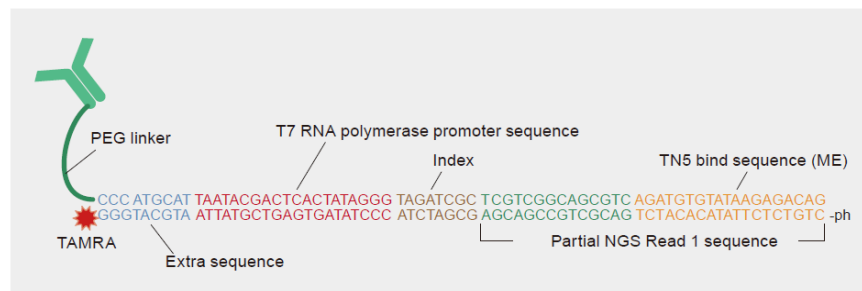
Conjugate: Unconjugated

Product Category: Whole IgG Affinity-Purified Antibodies

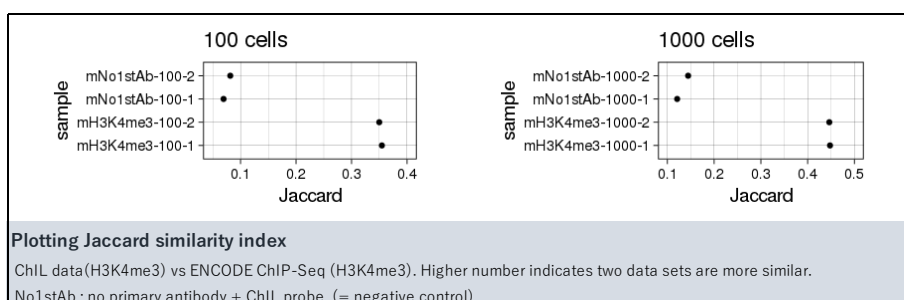
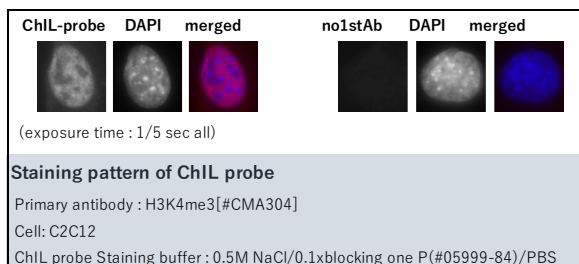
Clonality: Polyclonal

Conjugation Compound : DBCO-PEG5-NHS Ester, MW = 693.74 [Click Chemistry Tools cat#: A102P-2]

ChIL oligo DNA :



Validation :



Reference : Chromatin integration labeling for mapping DNA-binding proteins and modifications with low input.

Handa T#, Harada A#, Maehara K#, Sato S, Nakao M, Goto N, Kurumizaka H, Ohkawa Y*, Kimura H**Nat Protoc.* 2020