



Selected Antibodies

Quality Antibodies Quality Results

ABOUT

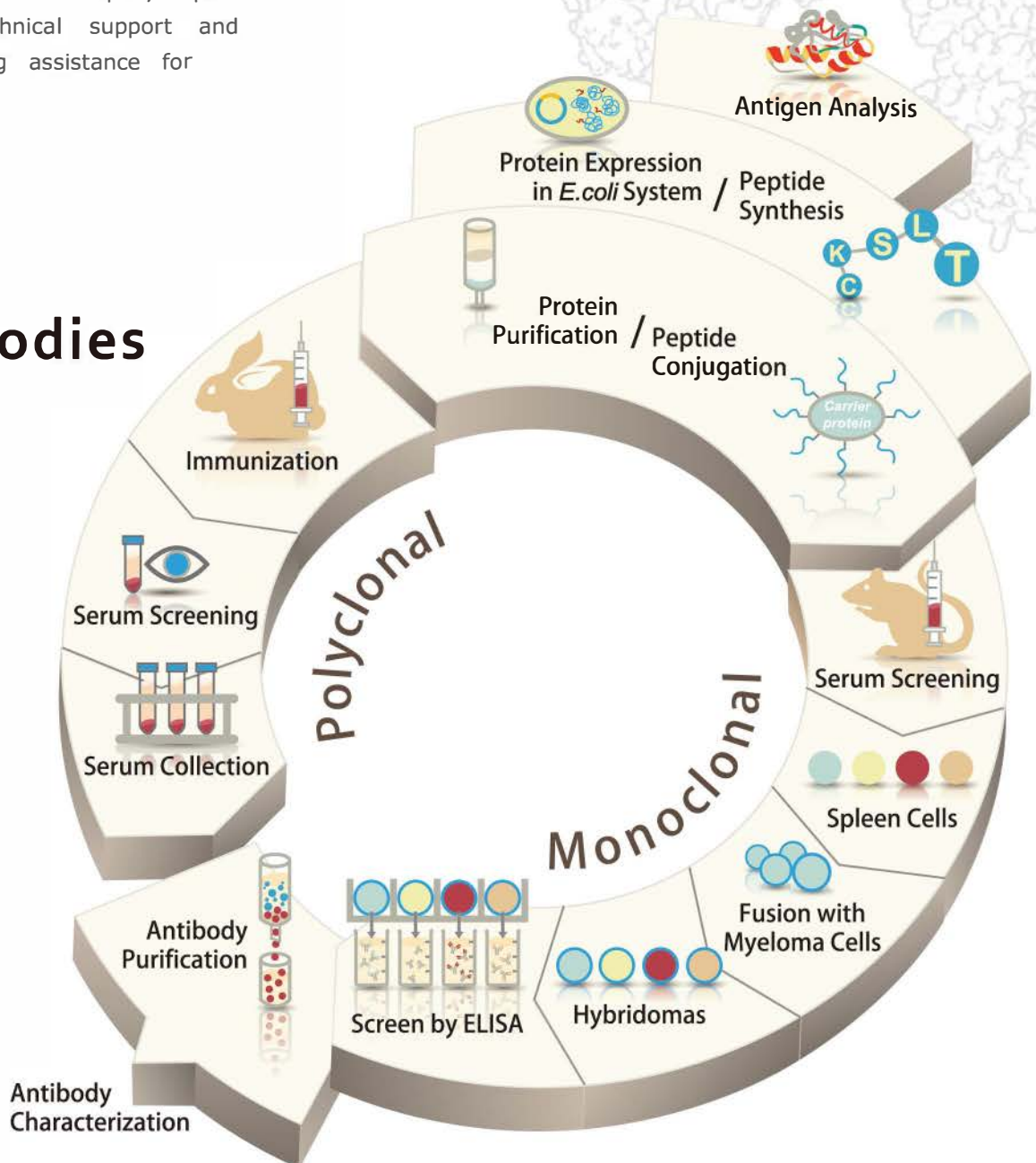


Starting as a small scientist-founded company in San Antonio, Texas, GeneTex has grown to become one of the top antibody manufacturers and has solidified its position in the life sciences industry.

Our corporate mission, to provide our customers with quality reagents and to accelerate life sciences research, reflects the philosophy and approach we employ when we manufacture our products. Through extensive research, development, and quality-assurance testing, we have produced and validated a comprehensive collection of antibodies and research reagents.

Due to GeneTex's experience in antibody production, we are uniquely capable of providing technical support and troubleshooting assistance for our customers.

Our Antibodies

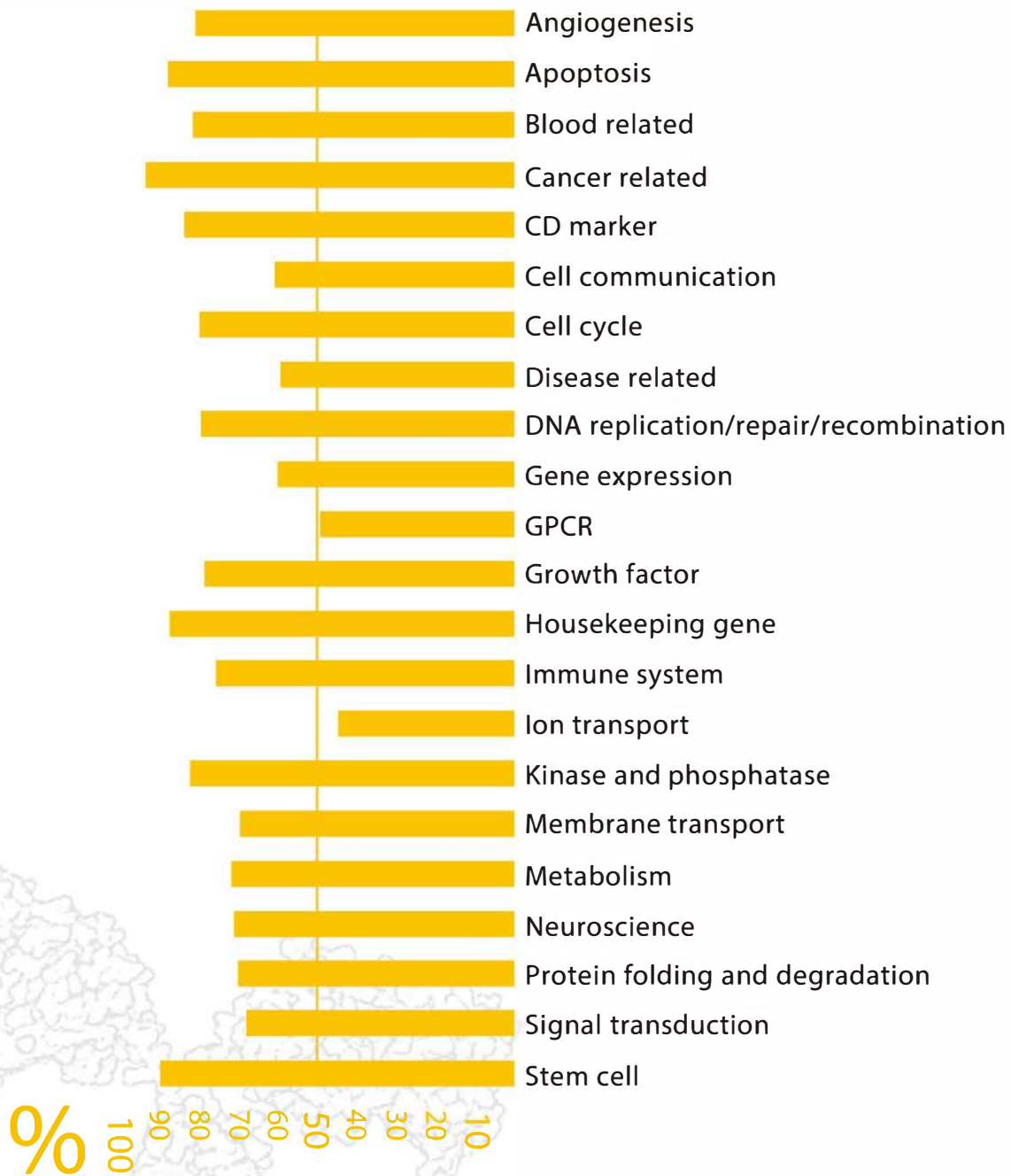


Selection you need

Comprehensive Coverage

GeneTex currently offers more than 55,000 products including over 45,000 primary antibodies that cover eleven different research areas. We continue to build upon our product portfolio to ensure that novel targets are available to researchers and that GeneTex keeps pace with new scientific discovery.

In addition to our comprehensive catalog of primary antibodies, GeneTex also offers a wide variety of quality reagents, kits and services.



Quality you can measure

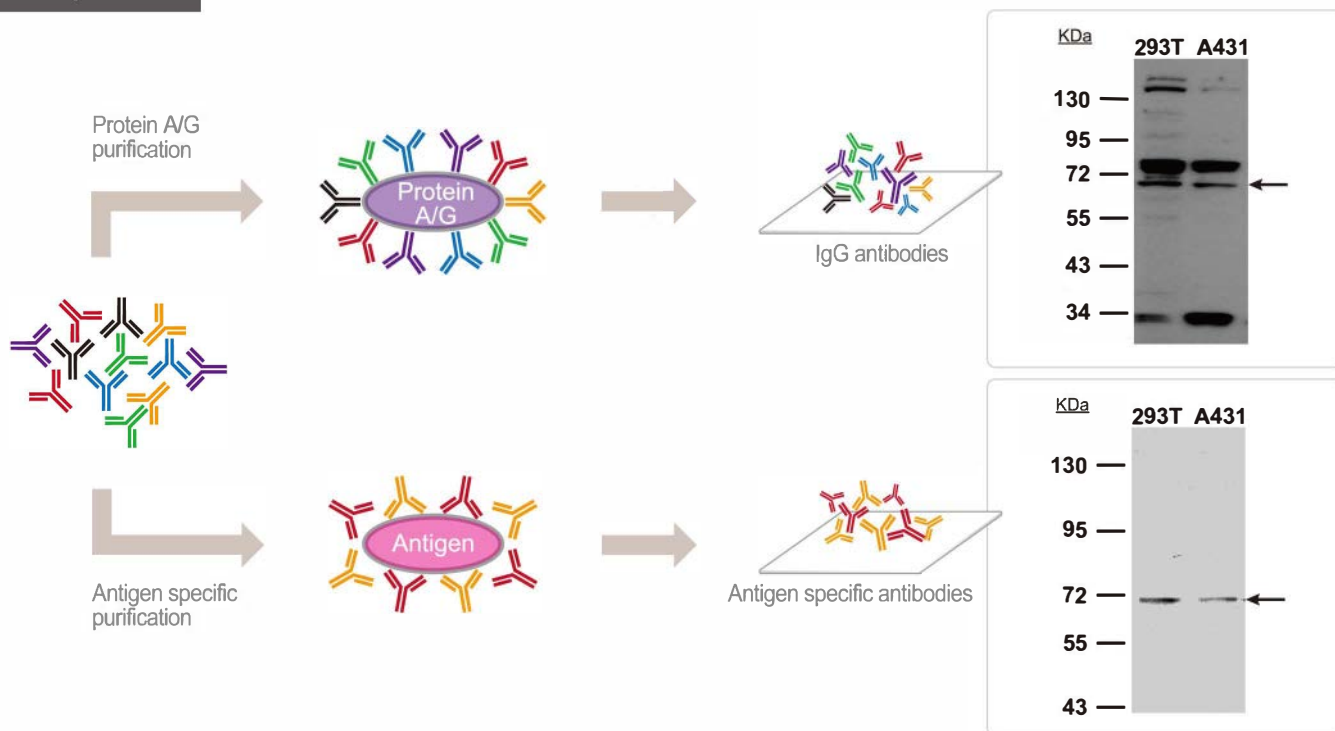
Immunogen Design

Our scientists and bioinformatics experts have hand-selected highly antigenic immunogens that minimize cross-reactivity and maximize detection of endogenous targets.

Affinity Purification

GeneTex uses Maxipure affinity purification to increase yield, purity and specificity of our antibodies.

Comparison



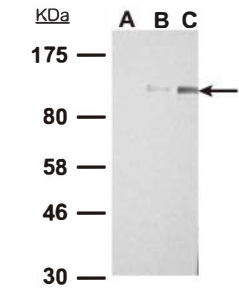
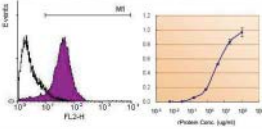
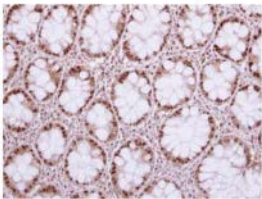
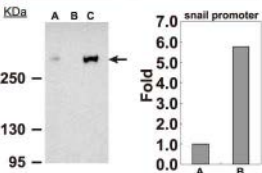
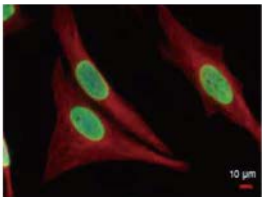
Rigorous Testing by Our In-house Quality Assurance Team

In addition to citations and Star Reviews by our customers, we validate our products for applications such as immunofluorescence, immunohistochemistry, FACS, ELISA, immunoprecipitation and ChIP. In many cases, we perform further validation using chemical treatments or siRNA/shRNA knockdown.

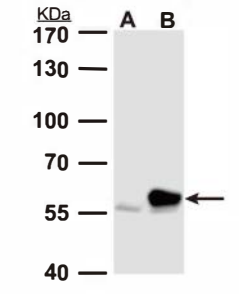
Our Product Review Process



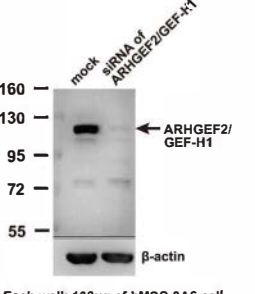
- IF/ICC, IHC, IP, ChIP,
FACS, ELISA
- Drug
Treatments
- Overexpression
Studies
- Knockdown
Studies
- Rare
Samples



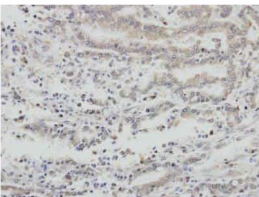
WB analysis using HIF1 alpha antibody (GTX127309) on HCT116 cell lysates. (A) mock control. (B) 150uM CoCl₂ treatment. (C) 300uM CoCl₂ treatment.



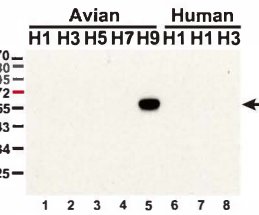
WB analysis using Rhotekin antibody (GTX114161) on 293T cell lysates. (A) mock control. (B) human Rhotekin transfection.



Each well: 100µg of hMSC-3A6 cell lysate 8% SDS PAGE
WB analysis using GEF-H1 antibody (GTX125893) on hMSC-3A6 cells treated with mock virus or ARHGEF2/ GEF-H1 siRNA. Beta-actin was used as the loading control.



IHC analysis using AIF antibody (GTX102399) on the paraffin-embedded gastric carcinoma.



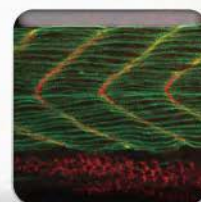
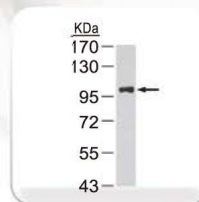
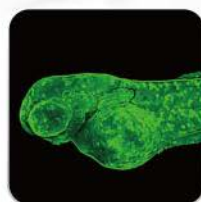
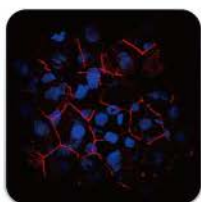
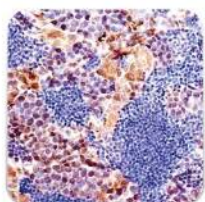
WB analysis using influenza A H9N2 HA antibody (GTX127305) on avian and human influenza A proteins.

Your Expertise, Our Antibodies, Accelerated Discovery.

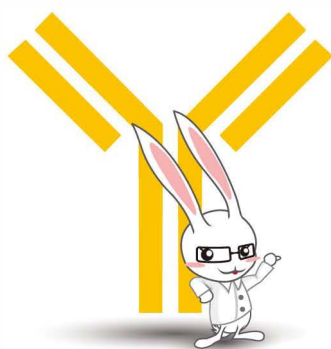
Flexibility that can ease your mind

Zebrafish Antibodies

As the leading manufacturer of zebrafish antibodies, GeneTex offers an extensive portfolio of products validated for use in this model system.



Flexible Packaging and Custom Antibodies



As an antibody manufacturer, GeneTex provides convenient trial size (25 μ l), full size (100 μ l) and bulk-quantity ordering options for many of our products. We also offer custom antibody services for both monoclonal and polyclonal antibodies.



Your Idea, Our Laboratory

Let GeneTex become your personal **custom** antibody production facility. GeneTex has produced **over 20,000** polyclonal antibodies. Use our experience and expertise to help advance your research.

Featured characteristics

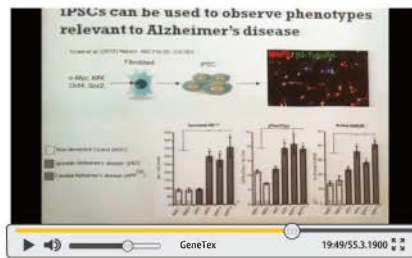
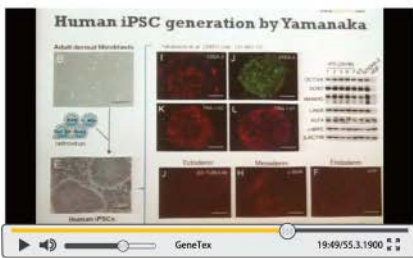
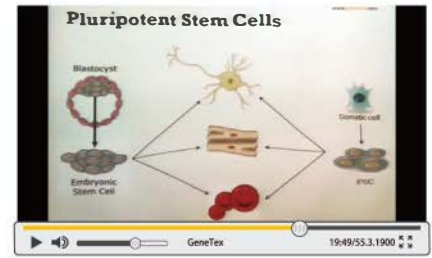
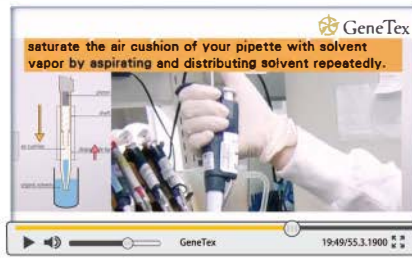
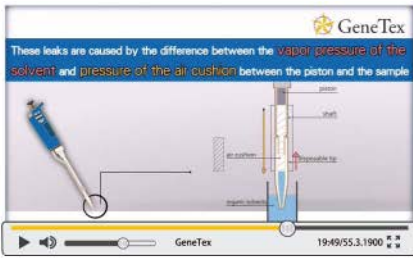
- Proprietary bioinformatics database identifies the ideal target epitope and optimizes synthesis, solubility and antigenicity
- Efficient production of high quality antigens using prokaryotic expression or peptide conjugation
- Enhanced cocktail immunization technique produces high-titer antiserum
- Highly specific antigen affinity purification
- Online tracking system

Customer Service You Can Trust

GeneTex Invites Interaction



Our friendly customer service staff and scientists would like to share our research experience with you. We have uploaded numerous helpful videos on YouTube that address common problems encountered when performing western blots and other assays. You can also find information on regular seminars and events organized by GeneTex by accessing our Facebook page. For more information, please visit GeneTex's YouTube, Facebook, Twitter, LinkedIn or Google+ pages. Links to these pages can be found on our website: www.genetex.com



Guarantee

GeneTex strives to provide the highest quality reagents and guarantees that all of our products will meet the specifications stated on the datasheet. Our team of skilled scientists are here to work with you on protocol optimization should you require any additional assistance. If our products do not perform as specified in our datasheets, we will replace or refund your purchase based upon your specific needs. For the details of our warranty policies please review GeneTex's Company Policy found on our website: www.genetex.com

2013 GeneTex Seminar



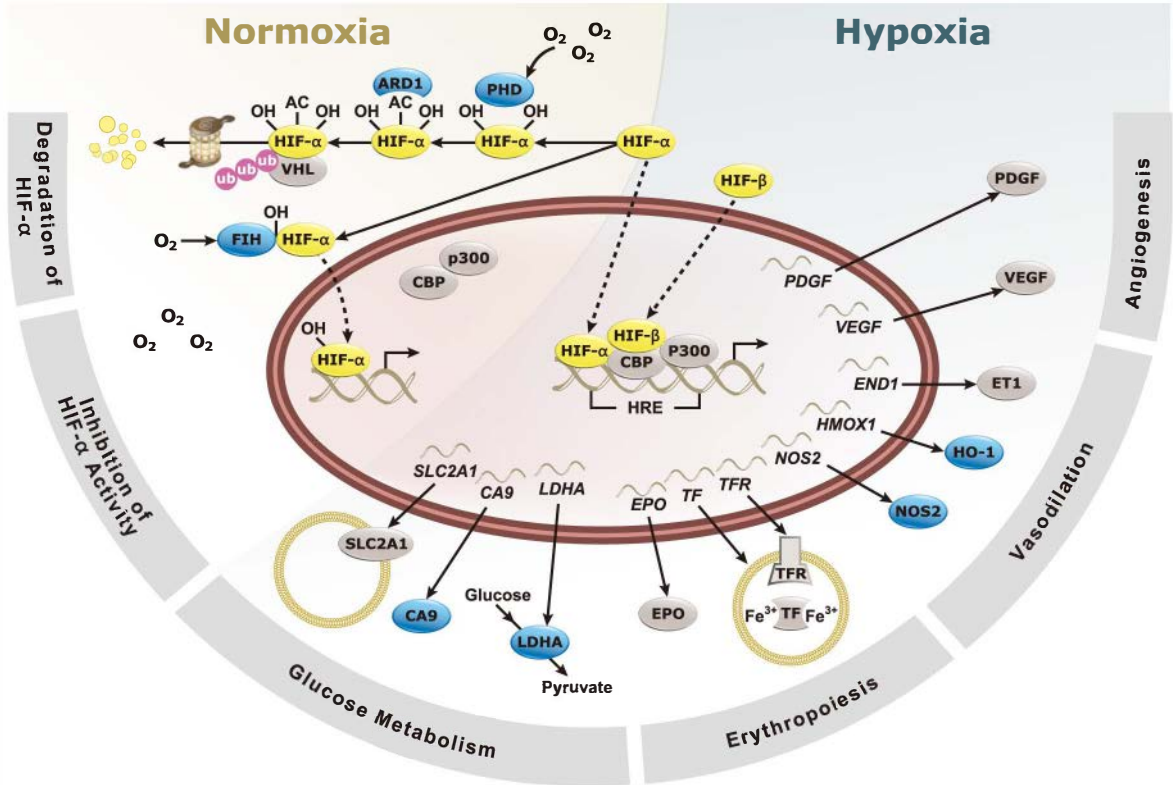
CONTENTS



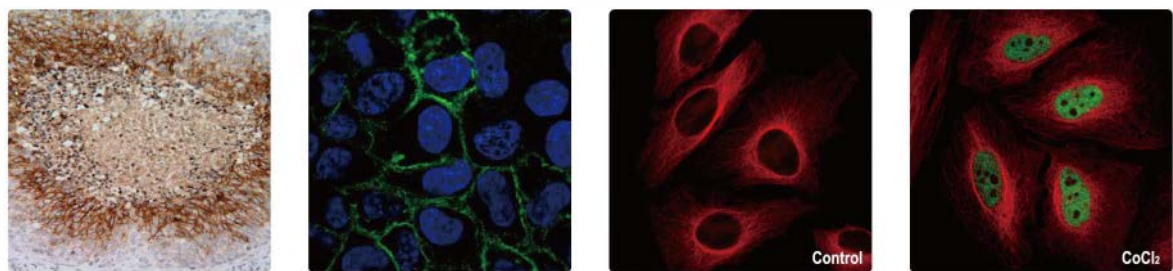
HYPOXIA	8
EMT	9
CANCER	10
CELL BIOLOGY	10
CELL CYCLE	13
DNA DAMAGE AND REPAIR	15
APOPTOSIS	18
AUTOPHAGY	19
ER STRESS	21
DISEASE-RELATED	22
EPIGENETICS DNA MODIFICATIONS	23
EPIGENETICS HISTONE MODIFICATIONS	24
METABOLISM	28
NEUROSCIENCE	30
NEURODEGENERATIVE DISORDER	32
SIGNAL TRANSDUCTION	33
NFκB	35
TGFβ/SMAD	36
PI3K/AKT	37
STEM CELL AND DEVELOPMENT	38
IMMUNOLOGY	40
INFECTIOUS DISEASES	42
EPI TOPE TAGS & INTERNAL CONTROL	44
ZEBRAFISH	45
SECONDARY ANTIBODY/EASYBLOT	48

Hypoxia

Hypoxia



■ Enzyme
 ■ Transcription Factor
 - - - - -> Translocation
 ub Ubiquitin

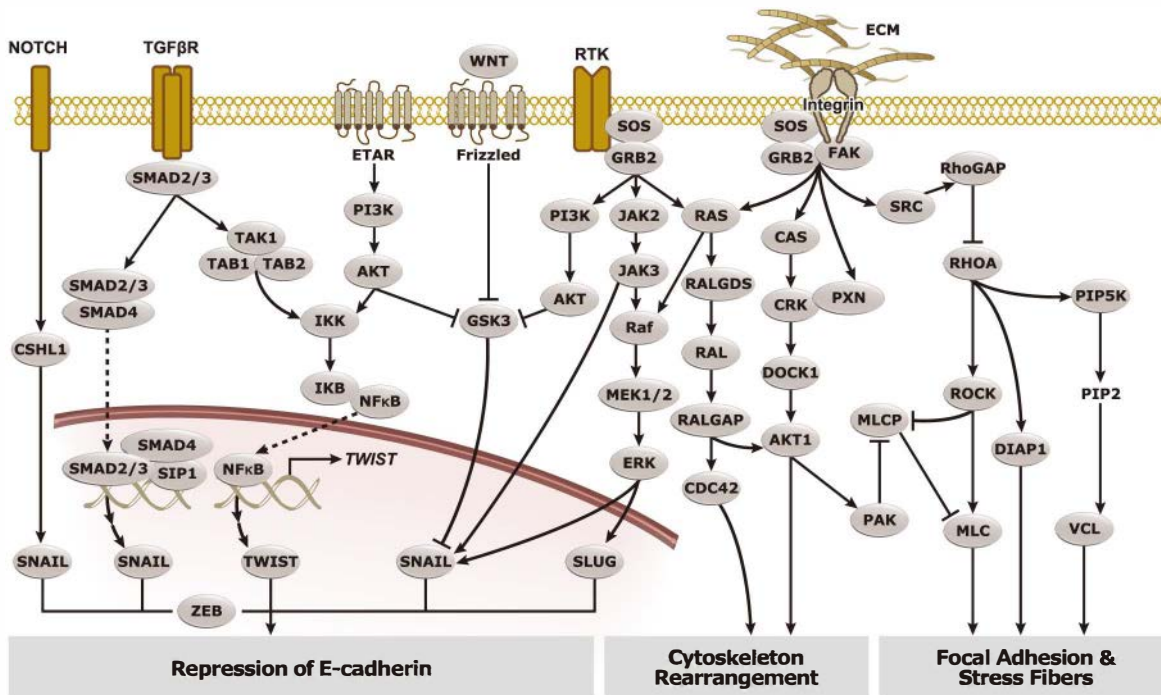


CAIX (GTX70020): IHC analysis using CAIX antibody [GT12] (GTX70020) on the paraffin-embedded cervical carcinoma tissue section.
CAIX (GTX70020): ICC analysis using CAIX antibody [GT12] (GTX70020; green) on A431 cells treated with CoCl₂ for 48 hours.
HIF1 alpha (GTX127309): ICC analysis using HIF1 alpha antibody (GTX127309; green) on HeLa cells treated w/ w/o 500µM of CoCl₂ for 24 hours.

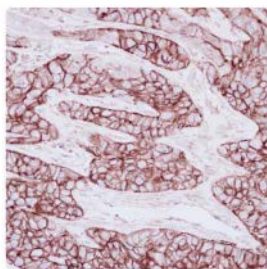
Citation

Cat. No.	Product Name	Host & Clonality	Reactivity	Application
GTX70020	CAIXAntibody [GT12]	Ms mAb	Hu	FACS, ICC/IF, IHC, IP, WB
GTX629747	Carbonic Anhydrase IX antibody [GT14212]	Ms mAb	Hu	ICC/IF, WB
GTX100205	Caveolin 1 antibody [N1N3]	Rb pAb	Hu, Ms	ICC/IF, IHC-P, WB
GTX127309	HIF1 alpha antibody	Rb pAb	Hu, Ms	ICC/IF, IP, WB, ChIP assay
GTX123033	EGLN2 antibody	Rb pAb	Hu	ICC/IF, IHC-P, WB
GTX101087	VHL antibody	Rb pAb	Hu, Ms, Rat	ICC/IF, IHC-P, IP, WB

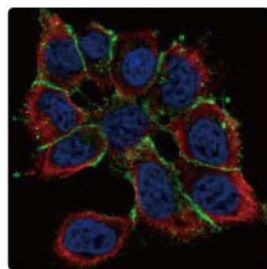
EMT



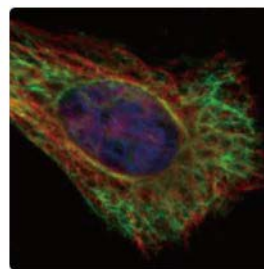
EMT



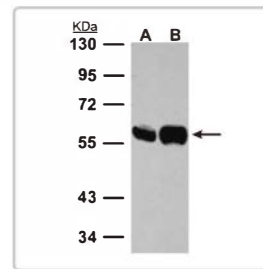
E-Cadherin (GTX100443):
IHC analysis using E-cadherin antibody (GTX100443) on the paraffin-embedded A549 xenograft.



E-Cadherin (GTX100443):
ICC analysis using E-cadherin antibody (GTX100443; green) on A431 cells.



Vimentin (GTX100619):
ICC analysis using Vimentin antibody (GTX100619; green) and alpha-tubulin antibody (GTX11304; red) on HeLa cells.



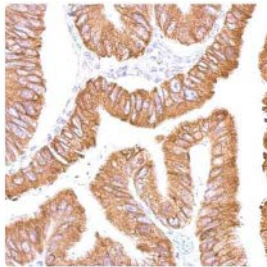
Vimentin (GTX100619):
WB analysis using Vimentin antibody (GTX100619) on (A) 293T and (B) HeLa cell lysates.

Citation

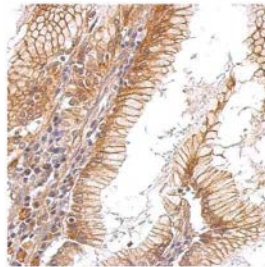
Cat. No.	Product Name	Host & Clonality	Reactivity	Application
GTX61823	E-Cadherin (phospho Ser838/840) antibody [EP913(2)Y]	Rb mAb	Hu, Ms, Rat	ICC/IF, IHC-P, IP, WB
GTX100443	E-cadherin antibody	Rb pAb	Hu	ICC/IF, IHC-P, WB
GTX25089	FOXA1 antibody, C-term	Gi pAb	Hu, Ms, Cow, Pig, Rat	ELISA, IHC, WB, ChIP assay
GTX127310	TWIST antibody	Rb pAb	Hu	WB
GTX100619	Vimentin antibody	Rb pAb	Hu, Ms, Rat	ICC/IF, IHC-P, WB
GTX629743	Vimentin antibody [GT7812]	Ms mAb	Hu, Ms, Rat	ICC/IF, WB

Cancer

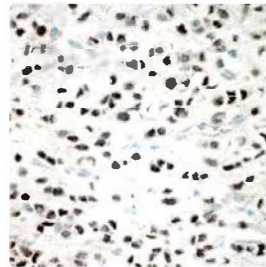
Cancer



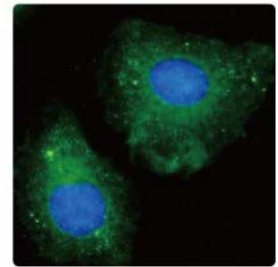
CES2 (GTX104337):
IHC analysis using CES2 antibody (GTX104337) on the paraffin-embedded colon tissue section.



EGFR (GTX100448):
IHC analysis using EGFR antibody [C2C3], C-term (GTX100448) on the gastric carcinoma tissue section.



ER beta (GTX70174):
IHC analysis using Estrogen Receptor beta antibody [14C8] (GTX70174) on the infiltrating lobular carcinoma (breast) tissue section.

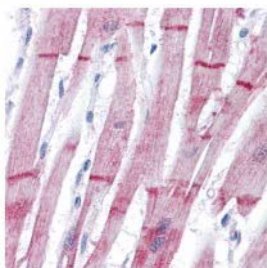


K-Ras (GTX100636):
ICC analysis using K-Ras antibody (GTX100636; green) on methanol-fixed HeLa cells.

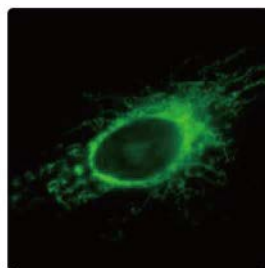
[Citation](#)

Cat. No.	Product Name	Host & Clonality	Reactivity	Application
GTX41003	ACTH antibody [56]	Ms mAb	Hu, Rat	ELISA, ICC/IF, IHC-P
GTX104337	CES2 antibody	Rb pAb	Hu	ICC/IF, IHC-P, WB
GTX61337	DARPP-32 antibody [EP720Y]	Rb mAb	Hu, Ms, Rat	ICC/IF, IHC-M, IHC-P, IP, WB
GTX100448	EGFR antibody [C2C3], C-term	Rb pAb	Hu	FACS, ICC/IF, IHC-P, WB
GTX100257	ERG antibody [C3], C-term	Rb pAb	Hu, Ms	ICC/IF, WB
C GTX70171	Estrogen Receptor alpha antibody [1F3]	Ms mAb	Hu	FACS, IP, WB
C GTX70174	Estrogen Receptor beta antibody [14C8]	Ms mAb	Hu, Ms	FACS, ICC/IF, IHC, IHC-P, WB, WB-Ag, ChIP assay
C GTX70178	Estrogen Receptor beta antibody [6A12]	Ms mAb	Hu	ICC/IF, IHC, WB, ChIP assay
C GTX70182	Estrogen Receptor beta antibody [7B10.7]	Ms mAb	Hu	IP, WB, ChIP assay
C GTX110607	Estrogen Receptor beta antibody [N2C2], Internal	Rb pAb	Hu, Ms	WB
GTX61586	HER2 (phospho Tyr1139) antibody [EP1046Y]	Rb mAb	Hu	FACS, IP, WB
GTX100636	K-Ras antibody [N1N3]	Rb pAb	Hu	ELISA, ICC/IF, IHC-P, IP, WB

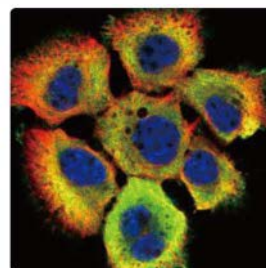
Cell Biology



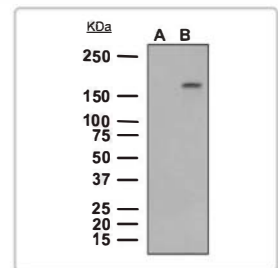
alpha Actinin 2 (GTX103219):
IHC analysis using Actinin 2 antibody (GTX103219) on the paraffin-embedded heart tissue section.



COX4 (GTX628886):
ICC analysis using COX4 antibody [GT6310] (GTX628886) on HeLa cells.



HSP70 1A (GTX111088):
ICC analysis using HSP70 1A antibody (GTX111088; green) and alpha-tubulin antibody (GTX11304; red) on A431 cells.



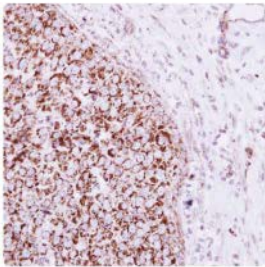
GCN2 phospho Thr899 (GTX62001):
WB analysis using GCN2 phospho Thr899 antibody [EPR2320Y] (GTX62001) on HeLa cell lysates. Cells were either (A) untreated or (B) treated with calyculin A legend.

[Citation](#)

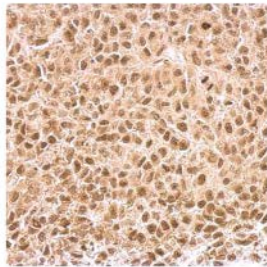
Cat. No.	Product Name	Host & Clonality	Reactivity	Application
GTX103219	alpha Actinin 2 antibody [N1N3]	Rb pAb	Hu, Ms	ICC/IF, IHC-P, WB
GTX62313	Aquaporin 5 antibody [EPR3747]	Rb mAb	Hu	ICC/IF, IHC-P, WB
C GTX26308	Collagen I antibody [CQL-1]	Msn Ab	Hu, Deer, Pig, Rb, Rat	Dot, ELISA, ICC/IF, IHC-Fr
GTX114330	COX4 antibody	Rb pAb	Hu, Ms, Rat	ICC/IF, IHC-P, WB
GTX628886	COX4 antibody [GT6310]	Ms mAb	Hu, Rat	ICC/IF, IHC-P, WB

Citation

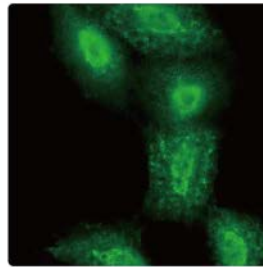
Cat. No.	Product Name	Host & Clonality	Reactivity	Application
GTX61597	DLC8 antibody [EP1680Y], N-term	Rb mAb	Hu, Ms, Rat	ICC/IF, IHC-P, IP, WB
GTX110510	EIF5A2 antibody	Rb pAb	Hu	ICC/IF, IHC-P, WB
GTX100297	ERp57 antibody [C3], C-term	Rb pAb	Hu, Ms, Rat	ICC/IF, IHC-P, WB
GTX112388	gamma 2 Actin antibody	Rb pAb	Hu, Ms	ICC/IF, IHC-P, WB
GTX101794	gamma Actin antibody	Rb pAb	Hu, Ms	IHC-P, WB
GTX113286	gamma Tubulin antibody	Rb pAb	Hu, Ms, Rat	ICC/IF, WB
GTX62001	GCN2 (phospho Thr899) antibody [EPR2320Y]	Rb mAb	Hu	WB
© GTX101185	Gelsolin antibody [C2C3], C-term	Rb pAb	Hu, Ms, Rat	ICC/IF, IHC-P, WB
© GTX61445	Golgi Matrix Protein (GM130) antibody [EP892Y]	Rb mAb	Hu, Ms, Rat	ICC/IF, IHC-M, IHC-P, IP, WB
GTX117716	GPKOW antibody [N3C3]	Rb pAb	Hu	ICC/IF, IHC-P, WB
GTX117420	GTF2A1 antibody	Rb pAb	Hu	ICC/IF, IHC-P, WB
GTX118874	GTF3C4 antibody	Rb pAb	Hu	ICC/IF, IHC-P, WB
GTX101852	hnRNP A/B antibody	Rb pAb	Hu	ICC/IF, IHC-P, IP, WB, ChIP-seq
GTX117578	hnRNP A2B1 antibody	Rb pAb	Hu	ICC/IF, IHC-P, WB
GTX106048	HSFY1+2 antibody	Rb pAb	Ms, Rat	WB
GTX111088	HSP70 1A antibody	Rb pAb	Hu, Ms	ICC/IF, IHC-P, IP, WB



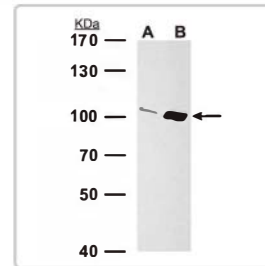
mtTFA (GTX112760):
IHC analysis using mtTFA antibody (GTX112760) on the breast carcinoma tissue section.



KLF5 (GTX103289):
IHC analysis using KLF5 antibody (GTX103289) on the HeLa xenograft.



PSMC5 (GTX105347):
ICC analysis using PSMC5 antibody (GTX105347) on A549 cells.



Importin 13 (GTX107982):
WB analysis using Importin 13 antibody [C3], C-term (GTX107982) on (A) PC-12 and (B) Rat2 cell lysates.

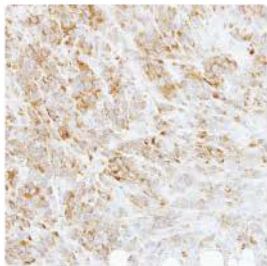
Citation

Cat. No.	Product Name	Host & Clonality	Reactivity	Application
GTX101448	HSP90beta antibody	Rb pAb	Hu, Ms, Rat	ICC/IF, IHC-P, WB
GTX106192	HSPA6 antibody [C1C3]	Rb pAb	Hu	ICC/IF, IHC-P, WB
GTX107982	Importin 13 antibody [C3], C-term	Rb pAb	Hu, Rat	ICC/IF, IHC-P, IP, WB
GTX103289	KLF5 antibody	Rb pAb	Hu	ICC/IF, IHC-P, WB
© GTX109558	LRP 130 antibody [N3C2], Internal	Rb pAb	Hu, Ms	ICC/IF, IHC-P, WB
GTX114541	MAFG antibody	Rb pAb	Hu, Ms, Rat	ICC/IF, IHC-P, WB
GTX115241	MED17 antibody [C1C3]	Rb pAb	Hu	ICC/IF, IHC-P, WB
GTX121542	MIER3 antibody	Rb pAb	Hu, Ms, Rat	ICC/IF, IHC-P, WB
GTX62287	MRP8 / S100A8 antibody [EPR3554], N-term	Rb mAb	Hu, Ms	ICC/IF, IHC-P, IP, WB
GTX112760	mtTFA antibody	Rb pAb	Hu	IHC-P, IP, WB
GTX103231	mtTFA antibody	Rb pAb	Hu	ICC/IF, IHC-P, IP, WB
GTX113236	MYH9 antibody [N1-2], N-term	Rb pAb	Hu, Ms, Rat	ICC/IF, WB
GTX109978	NCOA62 antibody [N3C3]	Rb pAb	Hu, Ms	ICC/IF, IHC-P, WB
GTX61664	Nrf2 (phospho Ser40) antibody [EP1809Y]	Rb mAb	Hu	ICC/IF, IHC-P, IP, WB
© GTX13541	Nucleolin antibody [4E2]	Ms mAb	Hu, Cow	ICC/IF, IHC, WB, ChIP assay
GTX102175	PAF49 antibody	Rb pAb	Hu	ICC/IF, IHC-P, WB

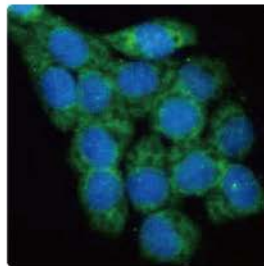
Cell Biology

Citation

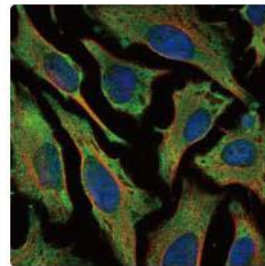
Cat. No.	Product Name	Host & Clonality	Reactivity	Application
GTX115725	PATZ1 antibody [N3C2], Internal	Rb pAb	Hu	ICC/IF, IHC-P, WB
GTX116314	PHF10 antibody	Rb pAb	Hu, Ms	ICC/IF, IHC-P, WB
GTX114991	PKNOX1 antibody	Rb pAb	Hu	IP, WB, ChIP-seq
GTX105347	PSMC5 antibody	Rb pAb	Hu, Ms, Rat	ICC/IF, IHC-P, WB
GTX114677	PSMC6 antibody	Rb pAb	Hu, Ms	ICC/IF, IHC-P, WB



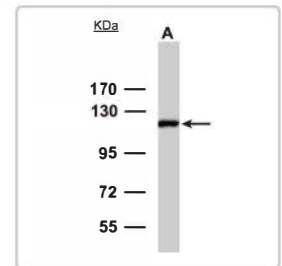
RPL3 (GTX114725):
IHC analysis using RPL3 antibody (GTX114725) on the 4T1 xenograft.



RPL8 (GTX101614):
ICC analysis using RPL8 antibody (GTX101614; green) on A431 cells.



Villin (GTX109940):
ICC analysis using Villin antibody (GTX109940; green) and alpha-tubulin antibody (GTX11304; red) on HeLa cells.



ZHX2 (GTX112232):
WB analysis using ZHX2 antibody [C1C3] (GTX112232) on HepG2 cell lysates.

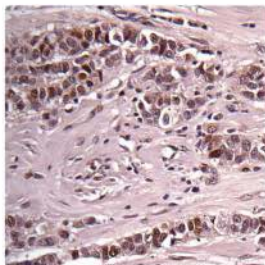
Citation

Cat. No.	Product Name	Host & Clonality	Reactivity	Application
GTX106722	PSME3 antibody	Rb pAb	Hu, Ms, Rat	ICC/IF, IHC-P, WB
GTX61852	Ribosomal Protein S6 (phospho (Ser235/236) antibody [EP1338(2)Y])	Rb mAb	Hu	ICC/IF, IHC-P, IP, WB
GTX20817	RNA polymerase II antibody [8WG16]	Ms mAb	Hu, Ms, Cow, XI	Puri, WB, ChIP assay
GTX114725	RPL3 antibody [N3C3]	Rb pAb	Hu	ICC/IF, IHC-P, WB
GTX101614	RPL8 antibody	Rb pAb	Hu, Ms	ICC/IF, IHC-P, WB
GTX103964	RPS3 antibody	Rb pAb	Hu, Ms, Rat	ICC/IF, IHC-P, WB
GTX111935	RPS3A antibody	Rb pAb	Hu, Rat	ICC/IF, IHC-P, WB
GTX113602	SAE1 antibody	Rb pAb	Hu, Ms, Rat	ICC/IF, IHC-P, WB
GTX114777	SMARCC1 antibody [C2C3], C-term	Rb pAb	Hu, Ms, Rat	ICC/IF, IHC-P, WB
GTX111816	SSRP1 antibody [N1N3]	Rb pAb	Hu	IHC-P, WB
GTX48659	TAF1 antibody	Rb pAb	Hu, Ms, Rat	ELISA, WB, ChIP assay
GTX115287	TOX antibody [N1C1]	Rb pAb	Hu	IHC-P, WB
C GTX21223	Transferrin antibody	Rb pAb	Hu	ELISA, IP, WB
GTX113937	TRIM32 antibody	Rb pAb	Hu, Rat	ICC/IF, IHC-P, WB
GTX118348	Tub antibody	Rb pAb	Hu, Ms, Rat	IHC-P, WB
GTX114870	UBE2L3 antibody [N1C3]	Rb pAb	Hu, Ms	ICC/IF, WB
GTX109579	UFD1L antibody	Rb pAb	Hu, Ms	ICC/IF, IHC-P, WB
GTX109940	Villin antibody	Rb pAb	Hu, Ms, Rat	ICC/IF, IHC-P, WB
GTX62722	YBOX1 / YB-1 antibody [EP2708Y], C-term	Rb mAb	Hu, Ms, Rat	FACS, ICC/IF, IHC-M, IHC-P, IP, WB
GTX112232	ZHX2 antibody [C1C3]	Rb pAb	Hu	ICC/IF, IHC-P, IP, WB, ChIP-seq
GTX106039	ZKSCAN3 antibody [N1C2]	Rb pAb	Hu	ICC/IF, IHC-P, WB
GTX102844	ZNF134 antibody	Rb pAb	Hu	ICC/IF, IHC-P, WB
GTX117129	ZNF189 antibody	Rb pAb	Hu	IP, WB, ChIP-seq
GTX119240	ZNF587 antibody	Rb pAb	Hu	ICC/IF, IHC-P, WB

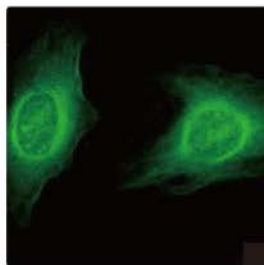
Cell Cycle

Citation

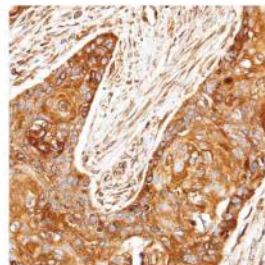
Cat. No.	Product Name	Host & Clonality	Reactivity	Application
Ⓢ GTX100276	FOXM1 antibody [C3], C-term	Rb pAb	Hu	IHC-P, WB, ChIP assay
GTX125893	GEF-H1 antibody	Rb pAb	Hu, Ms	ICC/IF, IHC-P, IP, WB
Ⓢ GTX70268	HEC1 antibody [9G3.23]	Ms mAb	Hu, Ms, Pig, AGMK	FACS, ICC/IF, IHC, IP, WB, WB-Ag
Ⓢ GTX109519	MAD1 antibody	Rb pAb	Hu, Ms, Rat	ICC/IF, IHC-P, IP, WB, ChIP assay
Ⓢ GTX104680	MAD2L1 antibody [C2C3], C-term	Rb pAb	Hu	ICC/IF, IHC-P, IP, WB
Ⓢ GTX110241	MCM3 antibody	Rb pAb	Hu, Ms	ICC/IF, IHC-P, WB
GTX110278	MCM7 antibody [N2C2], Internal	Rb pAb	Hu	ICC/IF, IHC-P, WB
GTX89991	ORC4L antibody, C-term	Gt pAb	Hu, Ms, Cow, Dog, Rat	ELISA, WB, ChIP assay



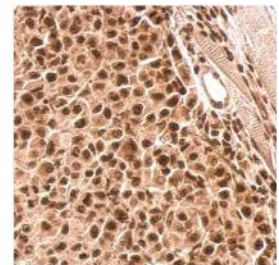
PCNA (GTX100539):
IHC analysis using PCNA antibody (GTX100539) on the paraffin-embedded breast carcinoma tissue section.



ROCK1 (GTX113266):
ICC analysis using ROCK1 antibody (GTX113266) on methanol-fixed HeLa cells.



ROCK2 (GTX108247):
IHC analysis using ROCK2 antibody (GTX108247) on the paraffin-embedded esophagus carcinoma tissue section.

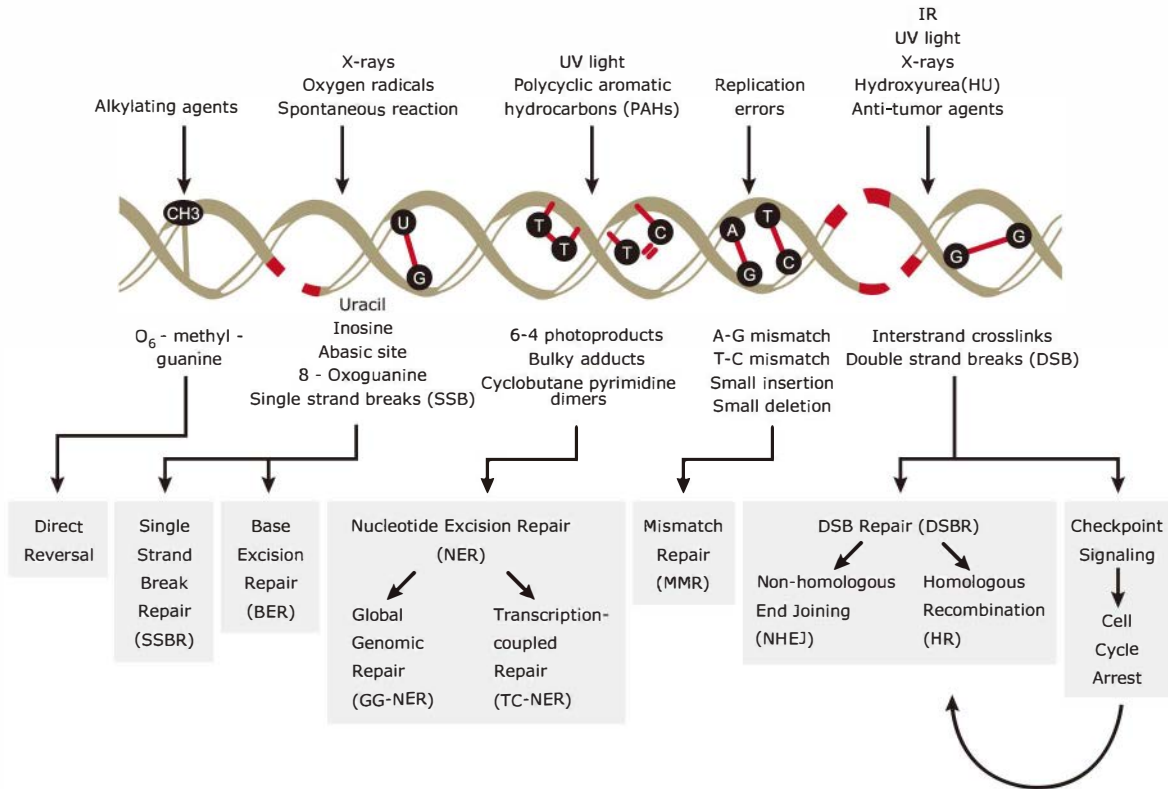


ROCK2 Ser1366pho (GTX122651):
IHC analysis using ROCK2 phospho Ser1366 antibody (GTX122651) on the paraffin-embedded HBL435 xenograft.

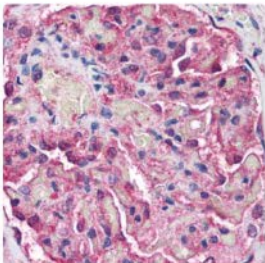
Citation

Cat. No.	Product Name	Host & Clonality	Reactivity	Application
Ⓢ GTX100539	PCNA antibody	Rb pAb	Hu, Ms, Rat	ICC/IF, IHC, IHC-P, WB
Ⓢ GTX20029	PCNA antibody [PC10]	Ms mAb	Hu, Ms, Rat	FACS, ICC/IF, IHC, IHC-Fr, IHC-P, IP, WB, WB-Ag
GTX113245	PIN1 antibody	Rb pAb	Hu, Ms, Rat	ICC/IF, WB
GTX113320	RACGAP1 antibody [N1N2], N-term	Rb pAb	Hu, Ms	ICC/IF, IHC-P, WB
Ⓢ GTX70236	RbAp48 + RbAp46 antibody [15G12]	Ms mAb	Hu, Ms	EMSA, ICC/IF, IHC-P, IP, WB
Ⓢ GTX70232	RbAp48 antibody [11G10]	Ms mAb	Hu, Ms	Blocking, ICC/IF, IP, WB, Functional Assay, ChIP assay
Ⓢ GTX70234	RbAp48 antibody [13D10]	Ms mAb	Hu	ICC/IF, IHC, IP, WB, ChIP assay
GTX115554	RbAp48 antibody [N1C2]	Rb pAb	Hu	ICC/IF, IHC-P, WB
GTX125921	ROCK1 antibody	Rb pAb	Hu	WB
GTX629972	ROCK1 antibody [GT464]	Ms mAb	Hu, Ms, Rat	WB
GTX113266	ROCK1 antibody [N1N2], N-term	Rb pAb	Hu, Rat	ICC/IF, IHC-P, WB
Ⓢ GTX122651	ROCK2 (phospho Ser1366) antibody	Rb pAb	Hu, Ms	IHC-Fr, IHC-P, WB
GTX108247	ROCK2 antibody [N3C1], Internal	Rb pAb	Hu, Ms, Rat	ICC/IF, IHC-P, WB
GTX117103	SGOL1 antibody	Rb pAb	Hu	ICC/IF, WB
GTX109724	SMC1A antibody [N1N2], N-term	Rb pAb	Hu	IHC-P, WB
GTX110402	SMC3 antibody [C2C3], C-term	Rb pAb	Hu, Ms, Rat	ICC/IF, IHC-P, WB
GTX115384	STAG1 antibody [N1N2], N-term	Rb pAb	Hu	ICC/IF, IHC-P, WB
GTX107336	TBRG4 antibody	Rb pAb	Hu	ICC/IF, IHC-P, WB
Ⓢ GTX118736	TSG101 antibody	Rb pAb	Hu	ELISA, ICC/IF, WB
Ⓢ GTX70255	TSG101 antibody [4A10]	Ms mAb	Hu, Ms, Rat, Mk, Hm	ELISA, FACS, ICC/IF, IHC, IHC-P, IP, WB

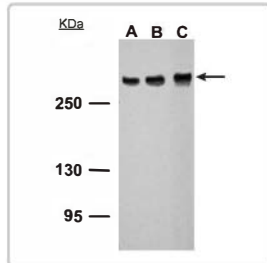
DNA Damage and Repair



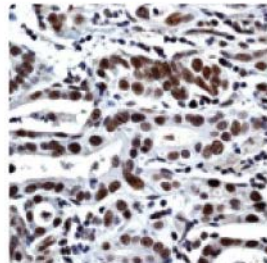
DNA Damage and Repair



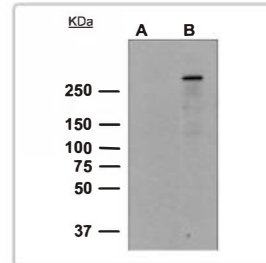
ATM (GTX70103):
IHC analysis using ATM antibody (GTX70103) on the paraffin-embedded human kidney tissue section.



ATM (GTX70103):
WB analysis using ATM antibody (GTX70103) on (A) NT2D1, (B) PC-3 and (C) SK-N-SH cell lysates.



ATM Ser1981 (GTX61739):
IHC analysis using ATM phospho Ser1981 antibody (GTX61739) on the paraffin-embedded human gastric carcinoma tissue section.

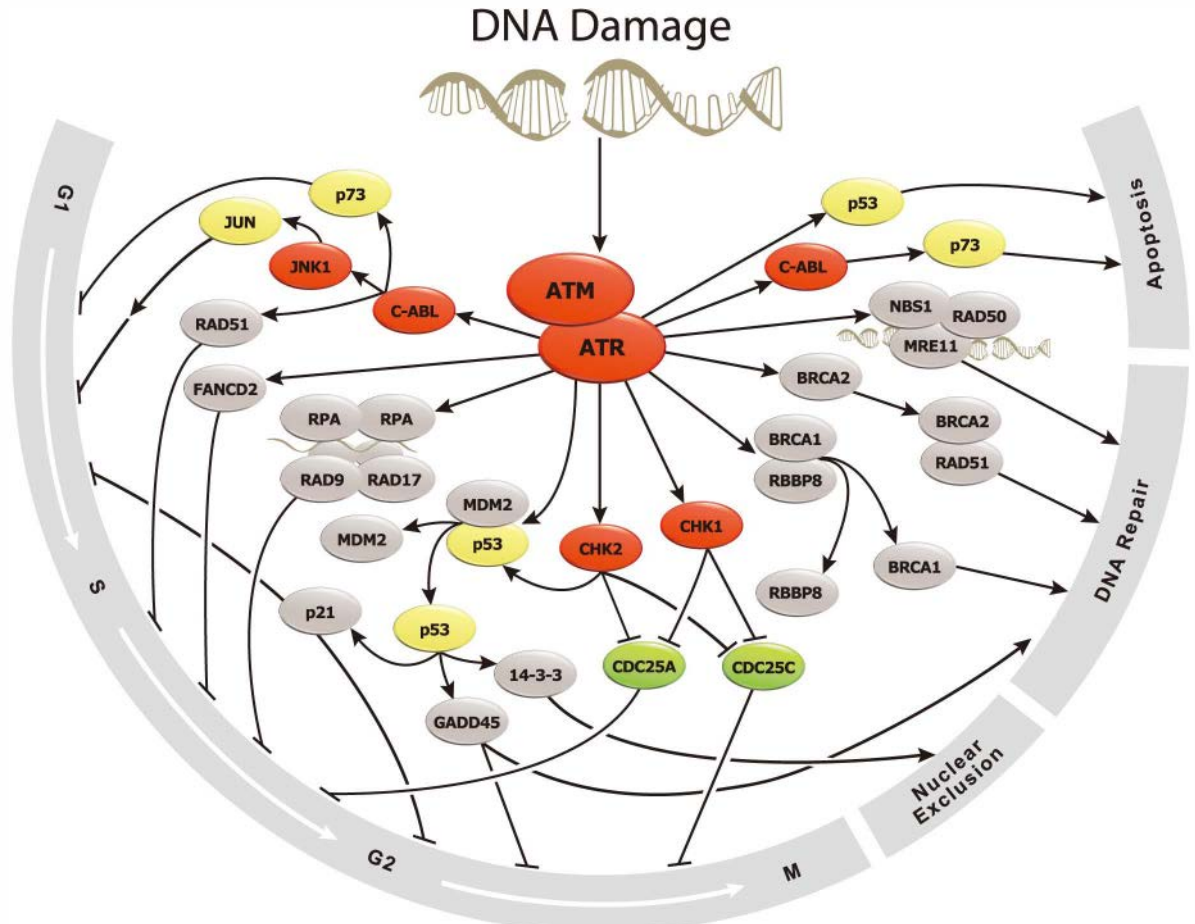


ATM Ser1981 (GTX61739):
WB analysis using ATM phospho Ser1981 antibody (GTX61739) on HEK293 cell lysates. Cells were either (A) untreated or (B) treated with doxorubicin.

Citation

Cat. No.	Product Name	Host & Clonality	Reactivity	Application
GTX70310	53BP1 antibody	Rb pAb	Hu	ICC/IF, IHC, WB
GTX110558	APE1 antibody	Rb pAb	Hu, Ms, Rat	ICC/IF, IHC-P, WB
GTX61739	ATM (phospho Ser1981) antibody [EP1890Y]	Rb mAb	Hu	ICC/IF, IHC-P, IP, WB
GTX70103	ATM antibody [2C1]	Ms mAb	Hu, Ms, Mk, Rat	ELISA, FACS, ICC/IF, IHC-P, IP, WB, ChIP assay
GTX77613	ATM antibody [2C1] (supernatant)	Ms mAb	Hu, Ms, Mk, Rat	ICC/IF, IHC, IHC-P, IP, WB
GTX70105	ATM antibody [3E8]	Ms mAb	Hu, Ms, Mk, Rat	IHC-P, IP, WB
GTX70107	ATM antibody [5C2]	Ms mAb	Hu, Ms, Mk, Rat	ICC/IF, IHC, WB

DNA Damage and Repair



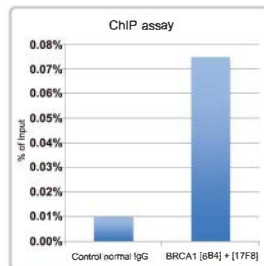
■ Kinase

■ Phosphatase

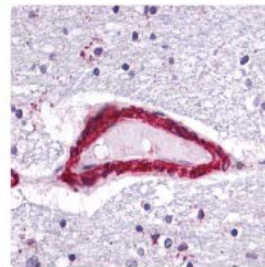
■ Transcription Factor



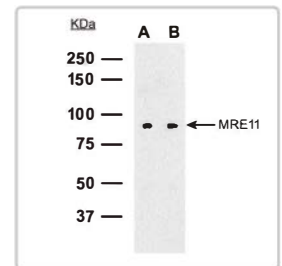
ATR (GTX70109):
ICC analysis using ATR antibody (GTX70109) on HeLa cells.



BRCA1 [6B4] (GTX70115):
ChIP analysis using BRCA1 antibody [6B4] (GTX70115) and BRCA1 antibody [17F8] (GTX70111) on HeLa chromatin extract.



BRCA1 [6B4] (GTX70115):
IHC analysis using BRCA1 antibody [6B4] (GTX70115).



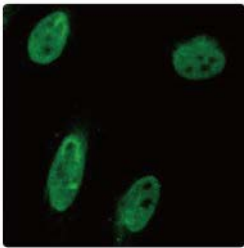
MRE11 (GTX70212):
WB analysis using MRE11 [12D7] antibody (GTX70212) on (A) HeLa and (B) Raji cell lysates.

Citation

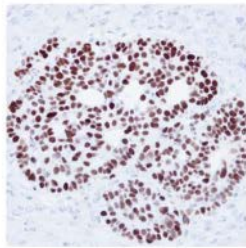
Cat. No.	Product Name	Host & Clonality	Reactivity	Application
GTX128145	ATR (phospho Thr1989) antibody	Rb pAb	Hu	WB
GTX70109	ATR antibody [2B5]	Ms mAb	Hu	ICC/IF, IP, WB, Functional Assay
GTX101303	BLM antibody [C3], C-term	Rb pAb	Hu, Ms	ICC/IF, IHC-P, WB
GTX70111	BRCA1 antibody [17F8] - ChIP grade	Ms mAb	Hu, Ms	ELISA, ICC/IF, IHC, IHC-P, IP, WB, ChIP assay
GTX70115	BRCA1 antibody [6B4] - ChIP grade	Ms mAb	Hu, Ms	ICC/IF, IHC, IP, WB, ChIP assay
GTX70113	BRCA1 antibody [8F7]	Ms mAb	Hu, Ms	IHC, IHC-P, IP, WB
GTX70264	CtIP antibody [19E8]	Ms mAb	Hu, Ms	ICC/IF, IP, WB, ChIP assay

Citation

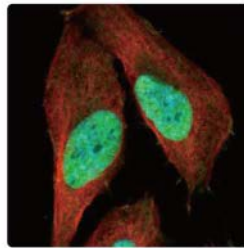
Cat. No.	Product Name	Host & Clonality	Reactivity	Application
Ⓢ GTX70141	DNA ligase I antibody [10H5]	Ms mAb	Hu, Ms	IP, WB
Ⓢ GTX70143	DNA ligase III antibody [1F3]	Ms mAb	Hu, Ms, Chk	Blocking, ICC/IF, IP, WB
Ⓢ GTX70147	DNA ligase III antibody [6G9]	Ms mAb	Hu, Ms	ICC/IF, IHC-P, WB
GTX100398	DNA polymerase gamma antibody	Rb pAb	Hu, Rat	ICC/IF, IHC-P, WB
GTX105720	DRIL1 antibody [N2C2], Internal	Rb pAb	Hu, Ms	ICC/IF, IHC-P, IP, WB
Ⓢ GTX100145	ERCC8 antibody [N2C2], Internal	Rb pAb	Hu, Ms	ICC/IF, WB, Functional Assay
GTX100519	HMG2 antibody - ChIP grade	Rb pAb	Hu, Ms, Rat	ICC/IF, IHC-P, WB, ChIP assay
GTX101820	Ku70 antibody	Rb pAb	Hu	ICC/IF, IHC-P, IP, WB
GTX110046	Ku80 antibody [N1N3]	Rb pAb	Hu	IHC-P, WB
Ⓢ GTX118741	Mre11 antibody	Rb pAb	Hu, Ms, Rat	ICC/IF, IHC-P, WB
Ⓢ GTX70212	Mre11 antibody [12D7]	Ms mAb	Hu	ELISA, ICC/IF, IHC-P, IP, WB, Functional Assay
Ⓢ GTX111661	MSH6 antibody [C1C2], Internal	Rb pAb	Hu, Ms, Zfish	EMSA, ICC/IF, IHC-P, WB



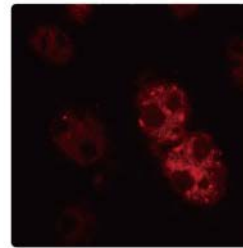
NBS1 (GTX70222):
ICC analysis using NBS1 antibody (GTX70222) on HeLa cells.



p53 (GTX102965):
IHC analysis using p53 antibody (GTX102965) on the paraffin-embedded Cal27 xenograft.



p53 (GTX102965):
ICC analysis using p53 antibody (GTX102965; green) and alpha-tubulin antibody (GTX11304; red) on U2OS cells.



RAD51 (GTX70230):
ICC analysis using RAD51 14B4 antibody (GTX70230) on U2OS cells.

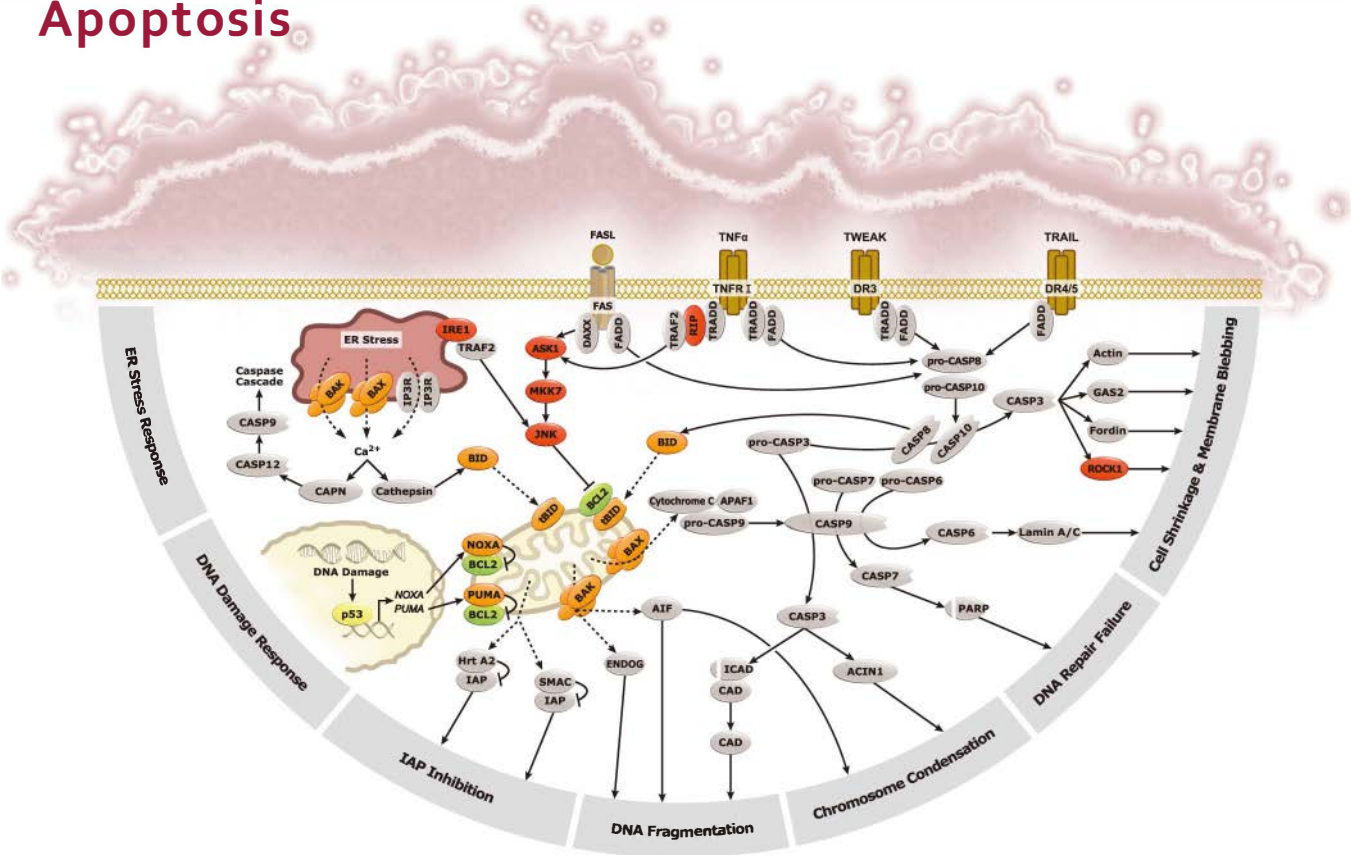
Citation

Cat. No.	Product Name	Host & Clonality	Reactivity	Application
GTX100082	MUS81 antibody	Rb pAb	Hu, Ms, Rat	ICC/IF, WB
Ⓢ GTX70222	NBS1 antibody [1C3]	Ms mAb	Hu	ICC/IF, IP, WB
Ⓢ GTX70224	NBS1 antibody [1D7]	Ms mAb	Hu, Ms, Rat	ICC/IF, IP, WB
GTX62061	p53 (acetyl Lys382) antibody [EPR358(2)]	Rb mAb	Hu	ICC/IF, WB
Ⓢ GTX102965	p53 antibody	Rb pAb	Hu	ICC/IF, IHC-P, IP, WB, ChIP assay
Ⓢ GTX70216	p53 antibody [Pab1801]	Ms mAb	Hu	ELISA, FACS, IHC-Fr, IHC-P, IP, RIA, WB, ChIP assay
GTX61028	PARP-1 (p116/p25) antibody [E102], N-term	Rb mAb	Hu, Ms, Rat	FACS, ICC/IF, IHC-P, WB
Ⓢ GTX100573	PARP1 antibody	Rb pAb	Hu	ICC/IF, WB
GTX111233	PRP19 antibody [N2C2], Internal	Rb pAb	Hu, Ms	ICC/IF, IHC-P, WB
GTX61991	Rad17 (phospho Ser645) antibody [EP1519Y]	Rb mAb	Hu	WB
GTX106012	RAD21 antibody	Rb pAb	Hu, Ms	ICC/IF, IHC-P, WB
GTX103424	RAD23B antibody	Rb pAb	Hu	ICC/IF, IHC-P, WB
Ⓢ GTX70228	Rad50 antibody [13B3]	Ms mAb	Hu, Ms, Mk, Rat	ICC/IF, IHC, IP, WB
GTX119731	Rad50 antibody [N1N2], N-term	Rb pAb	Hu, Ms	IHC-P, WB
Ⓢ GTX70230	Rad51 antibody [14B4]	Ms mAb	Hu, Chk	ICC/IF, IHC-P, IP, WB
Ⓢ GTX100469	Rad51 antibody [N1C2]	Rb pAb	Hu, Ms	ICC/IF, IHC-P, WB
GTX101310	Rad54 antibody [C3], C-term	Rb pAb	Hu, Ms	ICC/IF, IHC-P, WB
GTX62664	RPA32 (phospho Thr21) antibody [EPR2846(2)]	Rb mAb	Hu, Ms, Rat	ICC/IF, IHC-M, IHC-P, IP, WB
Ⓢ GTX70294	XPC antibody [3.26]	Ms mAb	Hu, Ms	ICC/IF, IHC-P, WB

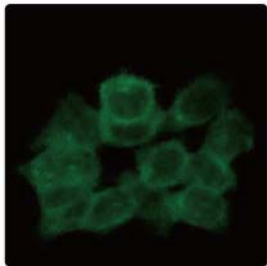
Apoptosis

Apoptosis

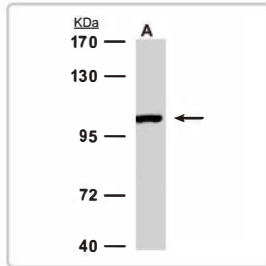
Apoptosis



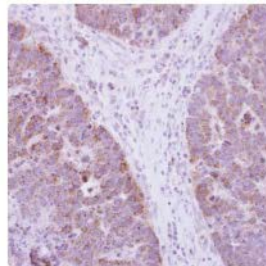
■ Kinase
 ■ Pro-Apoptotic Bcl-2 Family
 ■ Anti-Apoptotic Bcl-2 Family
 ■ Transcription Factor
 - - - - -> Translocation



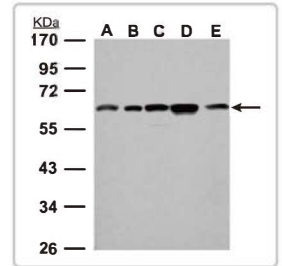
ABR (GTX100031):
ICC analysis using ABR antibody (GTX100031) on A431 cells.



ABR (GTX100031):
WB analysis using ABR antibody (GTX100031) on A431 cell lysates.



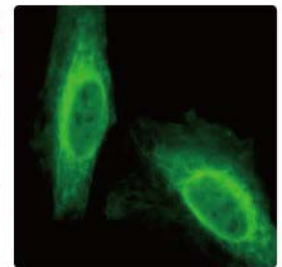
ApoJ (GTX101236):
IHC analysis using Apolipoprotein J antibody (GTX101236) on the colon carcinoma tissue section.



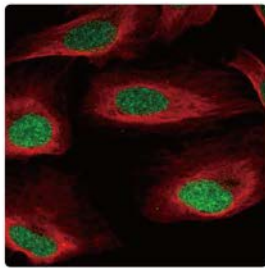
ApoJ (GTX101236):
WB analysis using Apolipoprotein J antibody (GTX101236) on (A) 293T, (B) A431, (C) HeLa, (D) HepG2, and (E) A375 cell lysates

Citation

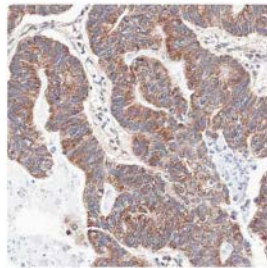
Cat. No.	Product Name	Host & Clonality	Reactivity	Application
GTX100031	ABR antibody [C3], C-term	Rb pAb	Hu Ms	ICC/IF, WB
GTX113329	Annexin A1 antibody	Rb pAb	Hu Ms	ICC/IF, IHC-P, WB
GTX113383	Annexin IV antibody	Rb pAb	Hu	ICC/IF, IHC-P, WB
GTX101236	Apolipoprotein J antibody	Rb pAb	Hu Ms, Rat	IHC-P, WB
GTX109683	BAX antibody [N1N2], N-term	Rb pAb	Hu Rat	ICC/IF, WB
GTX104636	Bif1 antibody [C2C3], C-term	Rb pAb	Hu Ms	ICC/IF, IHC-P, WB



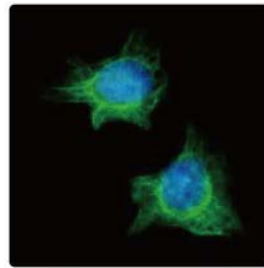
BAX (GTX109683):
ICC analysis using BAX antibody (GTX109683) on HeLa cells



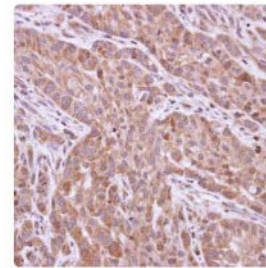
SURVIVIN (GTX100441):
ICC analysis using Survivin antibody (GTX100441; green) on U2OS cells



SURVIVIN (GTX100052):
IHC analysis using Survivin antibody (GTX100052) on the paraffin-embedded gastric carcinoma tissue section.



XIAP (GTX113130):
ICC analysis using XIAP antibody (GTX113130; green) on HeLa cells

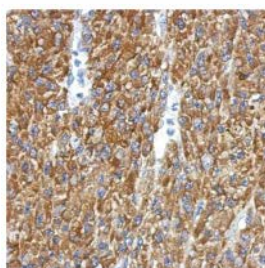


XIAP (GTX113130):
IHC analysis using XIAP antibody (GTX113130) on the paraffin-embedded A549 xenograft

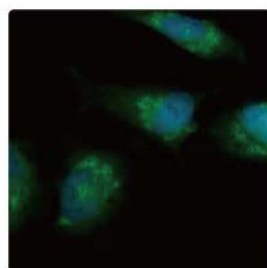
Citation

Cat. No.	Product Name	Host & Clonality	Reactivity	Application
GTX111876	BNIP3L antibody	Rb pAb	Hu, Ms	ICC/IF, IHC-P, WB
GTX110087	cIAP1 antibody	Rb pAb	Hu, Ms, Rat	WB
GTX113128	cIAP2 antibody	Rb pAb	Hu, Rat	IHC-P, WB
C GTX14515	COMP antibody	Rb pAb	Hu, Ms, Rat	IHC, WB
GTX113864	DAP3 antibody [N1C2-2]	Rb pAb	Hu	ICC/IF, IHC-P, WB
C GTX101145	HSP27 antibody	Rb pAb	Hu, Ms	FACS, ICC/IF, IHC-P, IP, WB
GTX109173	LITAF antibody [N1C3]	Rb pAb	Hu	IHC-P, IP, WB, ChIP-seq
C GTX70220	p84 antibody [5E10]	Ms mAb	Hu, Ms, Rat, Mk	ICC/IF, IHC, IP, WB, ChIP assay
GTX107574	RIP3 antibody	Rb pAb	Hu, Ms	ICC/IF, IHC-P, WB
GTX100441	Survivin antibody	Rb pAb	Hu, Ms	ICC/IF, IHC-P, WB
C GTX100052	Survivin antibody	Rb pAb	Hu	ICC/IF, IHC-P, WB
GTX100608	TID1 antibody	Rb pAb	Hu	ICC/IF, IHC-P, WB
GTX100119	TIP30 antibody	Rb pAb	Hu	ICC/IF, IHC-P, IP, WB
GTX111702	Transglutaminase 2 antibody [N3C3]	Rb pAb	Hu	ICC/IF, IHC-P, WB
GTX113130	XIAP antibody [N1C1]	Rb pAb	Hu	ICC/IF, IHC-P, WB

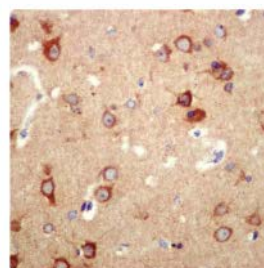
Autophagy



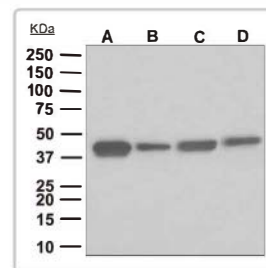
ATG12 (GTX124181):
IHC analysis using ATG12 antibody (GTX124181) on the paraffin-embedded U87 xenograft



ATG12 (GTX124181):
ICC analysis using ATG12 antibody (GTX124181; green) on HeLa cells treated with Tunicamycin



ATG4A (GTX62753):
IHC analysis using ATG4A antibody (GTX62753) on the paraffin-embedded human brain tissue section



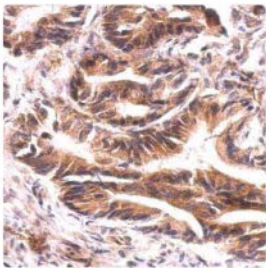
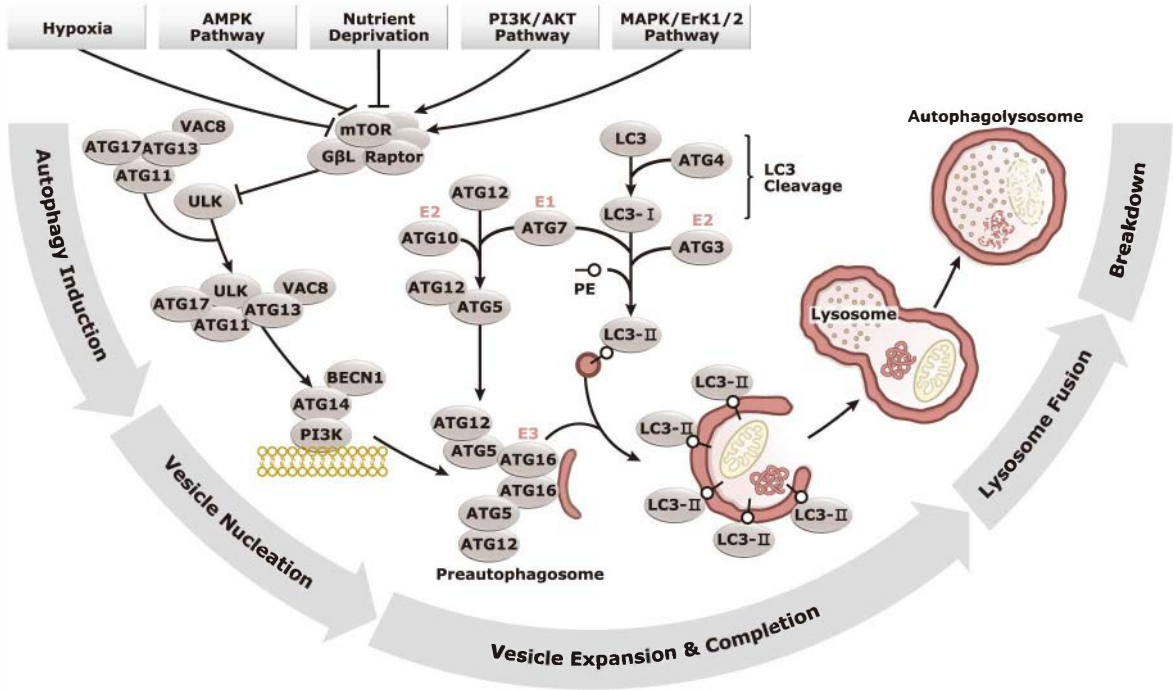
ATG4A (GTX62753):
WB analysis using ATG4A antibody (GTX62753) on (A) fetal liver, (B) HepG2, (C) Jurkat, and (D) fetal brain lysates

Citation

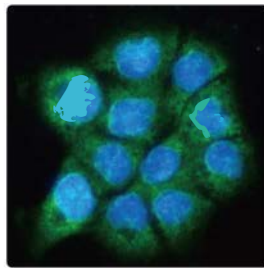
Cat. No.	Product Name	Host & Clonality	Reactivity	Application
GTX63165	AMPK alpha 1 (phospho Thr183)/ AMPK alpha 2 (phospho Thr172) antibody [EPR5683]	Rb mAb	Hu, Ms, Rat	IP, WB
C GTX103487	AMPK alpha 2 antibody	Rb pAb	Hu, Ms	ICC/IF, IHC-P, IP, WB
GTX124181	ATG12 antibody	Rb pAb	Hu, Ms, Rat	ICC/IF, IHC-P, WB
GTX62939	Atg12 antibody [EPR4799]	Rb mAb	Hu	FACS, ICC/IF, IHC-P, IP, WB
GTX128166	ATG14 antibody	Rb pAb	Hu	IHC-P, WB
GTX62753	ATG4A antibody [EPR4122]	Rb mAb	Hu, Ms, Rat	IHC-P, IP, WB

Autophagy

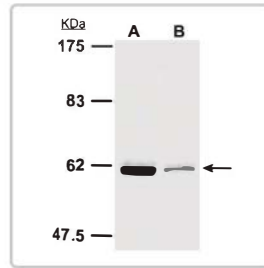
Autophagy



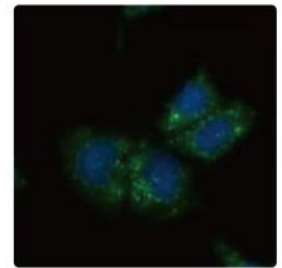
ATG9A (GTX128427):
IHC analysis using ATG9A antibody (GTX128427) on the paraffin-embedded colon carcinoma tissue section.



ATG9A (GTX128427):
ICC analysis using ATG9A antibody (GTX128427; green) on A431 cells



SQSTM1 (GTX100685):
WB analysis using SQSTM1 antibody (GTX100685) on Huh7 cell lysates. Cells were either (A) untreated or (B) treated with Thapsigargin for 12 hours.

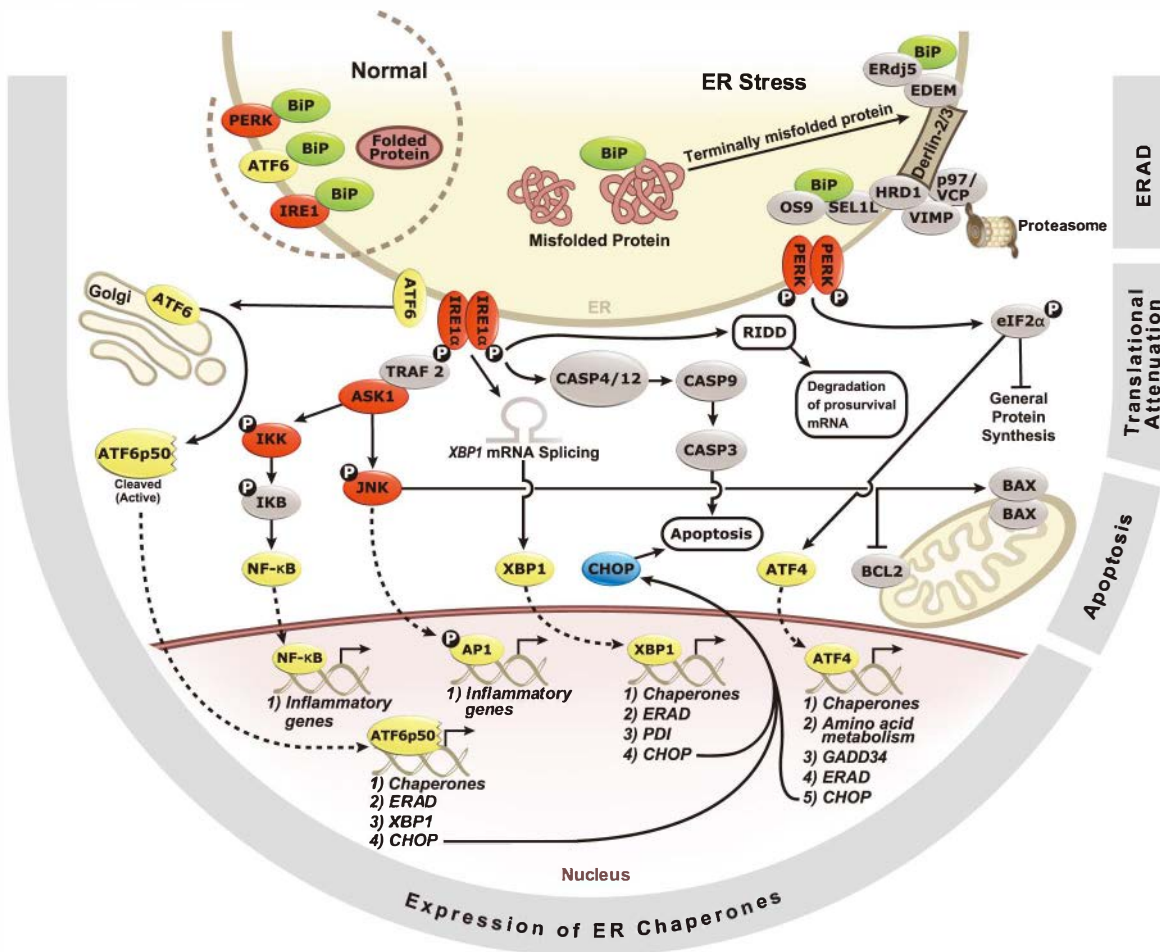


SQSTM1 (GTX100685):
ICC analysis using SQSTM1 antibody (GTX100685; green) on HepG2 cells treated with thapsigargin

Citation

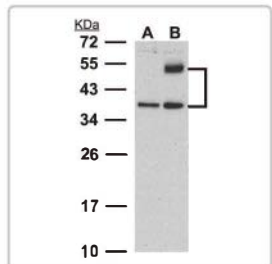
Cat. No.	Product Name	Host & Clonality	Reactivity	Application
GTX106114	ATG4D antibody [N3C3]	Rb pAb	Hu	IHC-P, WB
GTX48583	ATG5 antibody	Rb pAb	Hu, Ms, Cow, Pig, NHuPrm, Rat, Xi, Zfsh	ELISA, ICC/IF, IHC-P, WB
GTX128427	ATG9A antibody	Rb pAb	Hu, Ms, Rat	IHC-P, WB
GTX62510	ATG9A antibody [EPR2450(2)]	Rb mAb	Hu, Ms, Rat	ICC/IF, IHC-M, IHC-P, IP, WB
GTX85184	ATG9B antibody	Rb pAb	Hu, Ms, Rat	ELISA, ICC/IF, WB
GTX113039	Beclin 1 antibody	Rb pAb	Hu, Ms	IHC-P, WB
GTX107387	FIP200 antibody [N1N2], N-term	Rb pAb	Hu	ICC/IF, WB
GTX128171	SQSTM1 (phospho Ser403) antibody	Rb pAb	Hu, Ms	WB
GTX629890	SQSTM1 antibody [GT1478]	Ms mAb	Hu	ICC/IF, WB
GTX100685	SQSTM1 antibody [N3C1], Internal	Rb pAb	Hu, Ms, Zfsh	ICC/IF, WB
GTX111476	ULK2 antibody [C2C3], C-term	Rb pAb	Hu, Ms	ICC/IF, IHC-P, WB
GTX122101	WIPI2 antibody	Rb pAb	Hu	ICC/IF, IHC-P, WB

ER Stress

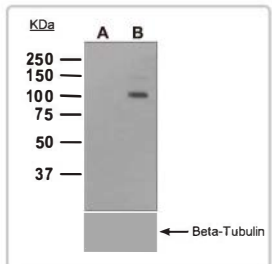


ER Stress

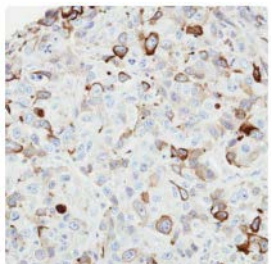
■ Enzyme
 ■ Kinase
 ■ Phosphatase
 ■ Transcription Factor
> Translocation
 P Phospho



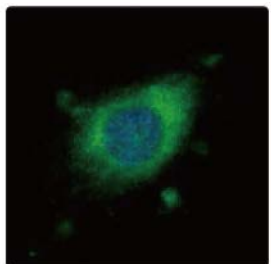
ATF4 (GTx101943):
 WB analysis using ATF4 antibody (GTx101943) on HeLa cells. Cells were either (A) untreated or (B) treated with tunicamycin



IRE1 (GTx63722):
 WB analysis using IRE1 (phospho Ser724) antibody [EPR5253] (GTx63722) on 293T cell lysates. (A) Untreated control. (B) Cells were treated with Calyculin A.



JNK2 (GTx107477):
 IHC analysis using JNK2 antibody (GTx107477) on the paraffin-embedded FaDu xenograft.

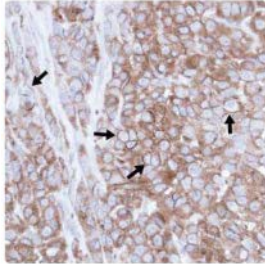


JNK2 (GTx107477):
 ICC analysis using JNK2 antibody (GTx107477; green) on HeLa cells.

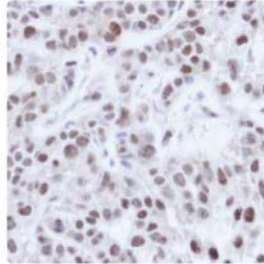
© Citation

Cat. No.	Product Name	Host & Clonality	Reactivity	Application
© GTx101943	ATF4 antibody	Rb pAb	Hu	WB
GTx110543	Caspase 3 antibody	Rb pAb	Hu, Ms	ICC/IF, IHC-P, WB
GTx112827	GADD153 antibody [NIC3]	Rb pAb	Hu	WB
GTx63722	IRE1 (phospho Ser724) antibody [EPR5253]	Rb mAb	Hu	WB
GTx61742	JNK1 (phospho Tyr185) / JNK2 (phospho Tyr185) / JNK3 (phospho Tyr223) antibody [EP1597Y]	Rb mAb	Hu, Ms, Rat	IP, WB
GTx107477	JNK2 antibody	Rb pAb	Hu	ICC/IF, IHC-P, WB

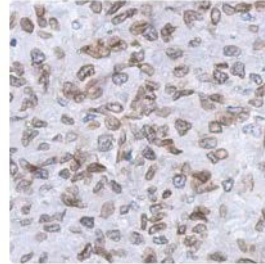
Disease-Related



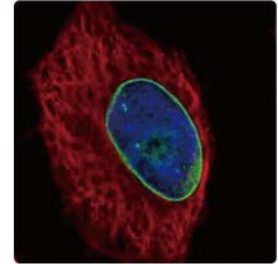
Caveolin 3 (GTX109650):
IHC analysis using Caveolin-3 antibody (GTX109650) on the paraffin-embedded A549 xenograft.



HNF1 alpha (GTX113850):
IHC analysis using HNF-1 alpha antibody (GTX113850) on the paraffin-embedded A549 xenograft.



LaminA/C (GTX101127):
IHC analysis using Lamin A/C antibody (GTX101127) on the paraffin-embedded C2C12 xenograft.

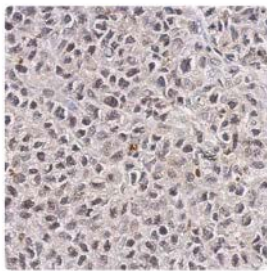
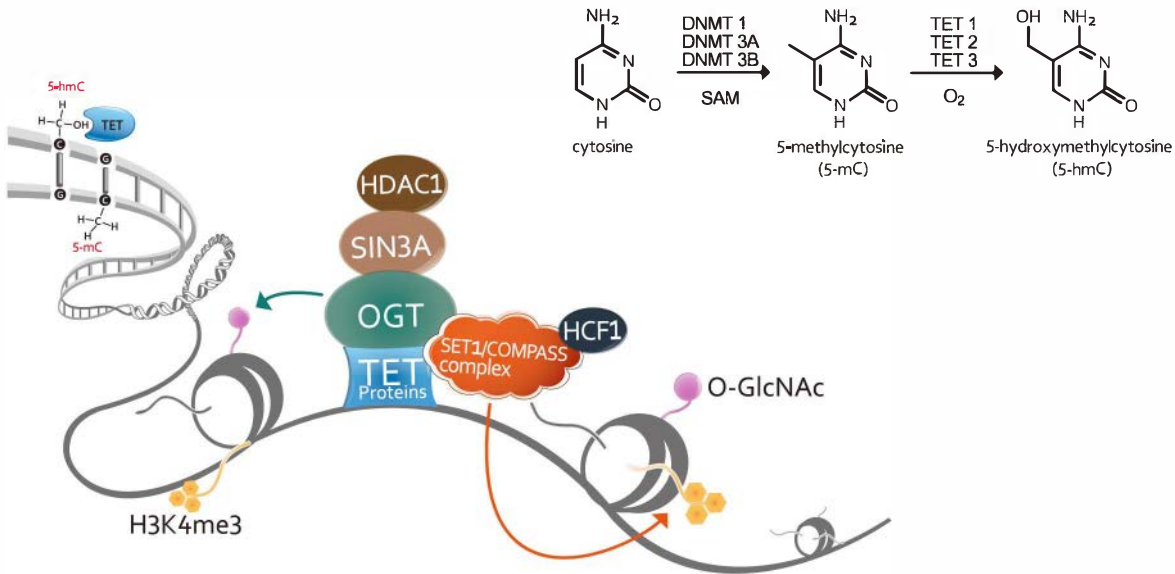


LaminA/C (GTX101127):
ICC analysis using Lamin A/C antibody (GTX101127; green) on methanol-fixed HeLa cells.

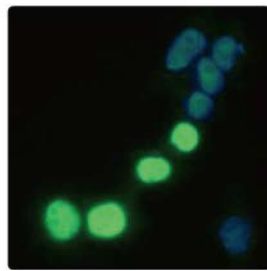
Citation

Cat. No.	Product Name	Host & Clonality	Reactivity	Application
GTX119410	AAMP antibody	Rb pAb	Hu, Ms, Rat	IHC-P, WB
GTX15348	ACE2 antibody	Rb pAb	Hu, Rat	IHC, IHC-P, WB
GTX101362	alpha Actin (skeletal muscle) antibody	Rb pAb	Hu, Ms	IHC-P, WB
GTX101669	alpha Actinin 4 antibody [C2C3], C-term	Rb pAb	Hu, Ms, Rat	ICC/IF, IHC-P, WB
GTX101902	Annexin II antibody	Rb pAb	Hu, Ms, Rat	ICC/IF, IHC-P, WB
GTX109242	Arginase 1 antibody	Rb pAb	Hu, Ms	ICC/IF, IHC-P, WB
GTX109650	Caveolin 3 antibody [N1N2], N-term	Rb pAb	Rat, Hu	IHC-P, WB
GTX119746	CCDC28B antibody [NIC3]	Rb pAb	Hu	ICC/IF, IHC-P, WB
GTX26586	Collagen IV antibody	Rb pAb	Hu, Cow, Mamm	Dot, ELISA, IHC-Fr, IHC-P, IM, IP, WB
GTX26992	CTGF antibody	Rb pAb	Hu, Ms, Rat	IHC, IHC-Fr, IHC-P, WB
GTX124232	CTGF antibody	Rb pAb	Hu, Ms, Rat	IHC-P, WB
GTX107993	ETEA antibody [C3], C-term	Rb pAb	Hu	ICC/IF, IHC-P, WB
GTX10066	Fibrinogen antibody [1F3]	Ms mAb	Hu	ELISA, WB
GTX101198	GGT1 antibody	Rb pAb	Hu, Ms	IHC-P, WB
GTX116040	GPX1 antibody	Rb pAb	Hu, Ms, Rat	ICC/IF, IHC-P, WB
GTX70266	GPX7 antibody [2704]	Ms mAb	Hu	IHC-P, WB
GTX113850	HNF1 alpha antibody [N1N3]	Rb pAb	Hu	IHC-P, WB
GTX101127	Lamin A/C antibody	Rb pAb	Hu, Ms, Rat	ICC/IF, IHC-P, WB
GTX114265	MOP3 antibody [C1C3]	Rb pAb	Hu	WB
GTX103888	Mox1 antibody	Rb pAb	Hu, Ms, Rat	ICC/IF, WB
GTX113250	PPAR delta antibody [N2C3]	Rb pAb	Hu, Ms	IHC-P, WB

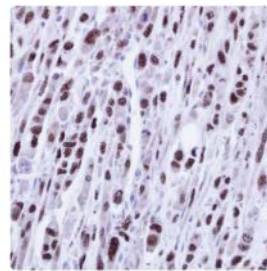
Epigenetics DNA Modifications



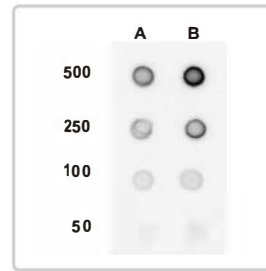
TET1 (GTx627420):
IHC analysis using TET1 antibody (GTx627420) on the paraffin-embedded HeLa xenograft.



TET1 (GTx627420):
ICC analysis using TET1 antibody (GTx627420; green) on 293T cells.



DNMT1 (GTx116011):
IHC analysis using DNMT1 antibody (GTx116011) on the paraffin-embedded PC3 xenograft.

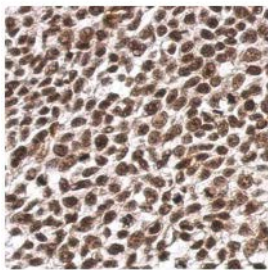
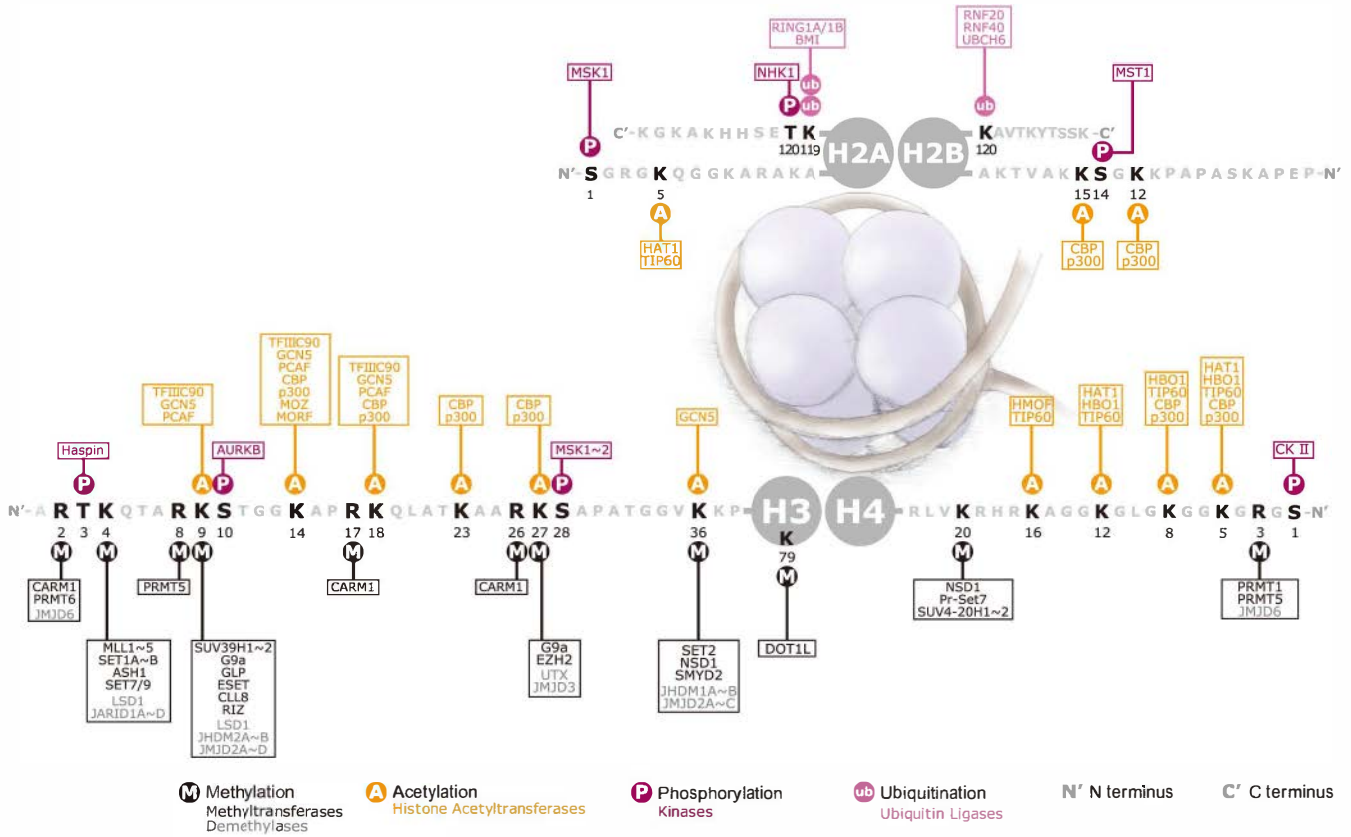


5hmC (GTx629701):
Dot blot analysis using 5hmC antibody (GTx629701) on the genomic DNA derived from 293T cells. Cells were either (A) untransfected or (B) transfected with human TET-1.

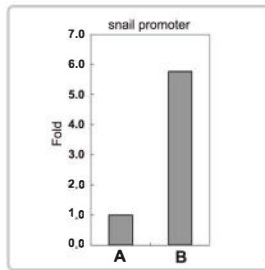
Citation

Cat. No.	Product Name	Host & Clonality	Reactivity	Application
GTx629701	5-HydroxymethylCytosine antibody [GT513]	Ms mAb	-	Dot
GTx629448	5-Methylcytosine antibody [GT4111]	Ms mAb	-	Dot
GTx116011	DNMT1 antibody [N1], N-term	Rb pAb	Hu	ICC/IF, IHC-P, WB, ChIP assay
GTx109939	O-GlcNAc transferase antibody	Rb pAb	Hu, Ms, Rat	ICC/IF, IHC-P, WB
GTx627420	TET1 antibody [GT1462]	Ms mAb	Hu	ICC/IF, IHC-P, IP, WB, ChIP assay
GTx124207	TET1 antibody [N3C1]	Rb pAb	Hu	ICC/IF, IHC-P, WB, ChIP assay
GTx121453	TET3 antibody [C3], C-term	Rb pAb	Hu, Xi	ICC/IF, IP, WB

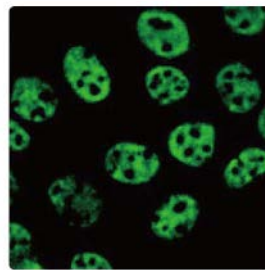
Epigenetics Histone Modifications



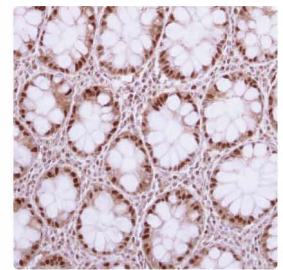
ARID5A (GTX122605):
IHC analysis using ARID5A antibody (GTX122605) on the paraffin-embedded 59T xenograft.



CBP (GTX101249):
ChIP analysis using CBP antibody (GTX101249) on snail promoter with cross-linked chromatin from HeLa cells.



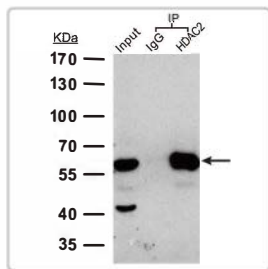
HDAC1 (GTX100513):
ICC analysis using HDAC1 antibody (GTX100513) on A431 cells.



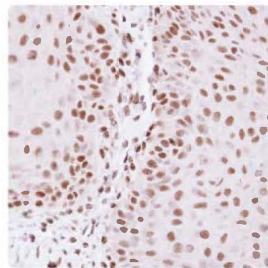
HAT1 (GTX110643):
IHC analysis using HAT1 antibody (GTX110643) on the paraffin-embedded colon tissue section.

Citation

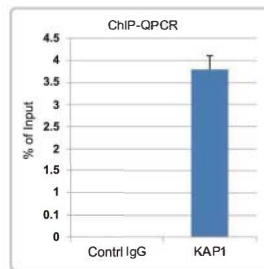
Cat. No.	Product Name	Host & Clonality	Reactivity	Application
GTX122605	ARID5A antibody	Rb pAb	Hu	IHC-P, WB
GTX101249	CBP antibody [C3], C-term	Rb pAb	Hu, Mk	ICC/IF, IHC-P, IP, WB, ChIP assay
GTX23736	DMAP1 antibody	Gt pAb	Hu, Ms, Fish, Zfish	WB, ChIP assay
GTX112268	EED antibody	Rb pAb	Hu	ICC/IF, IHC-P, WB
GTX100257	ERG antibody [C3], C-term	Rb pAb	Hu, Ms	ICC/IF, WB
GTX110643	HAT1 antibody	Rb pAb	Hu	ICC/IF, IHC-P, IP, WB
GTX100513	HDAC1 antibody	Rb pAb	Hu, Ms, Rat	ICC/IF, IHC-P, IP, WB, ChIP assay
GTX27029	HDAC2 antibody	Rb pAb	Hu, Ms, Rat	Dot, IHC-P, IP, WB, ChIP assay



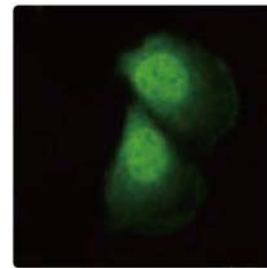
HDAC2 (GTX109642):
IP/IB analysis using HDAC2 antibody (GTX109642) and EasyBlot anti-rabbit IgG (GTX221666-01) on HeLa cell lysates



HDAC2 (GTX109642):
IHC analysis using HDAC2 antibody (GTX109642) on the paraffin-embedded Cal27 xenograft.



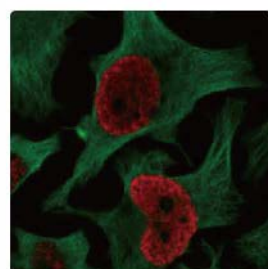
KAP1 (GTX102226):
ChIP analysis followed by qPCR using KAP1 antibody (GTX102226) on the KAP1-binding region within the ZNF180 3'UTR.



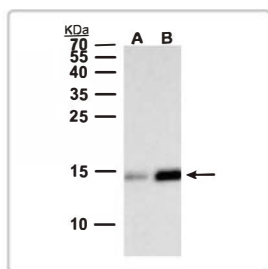
PRMT5 (GTX115994):
ICC analysis using PRMT5 antibody (GTX115994) on the A431 cells.

Citation

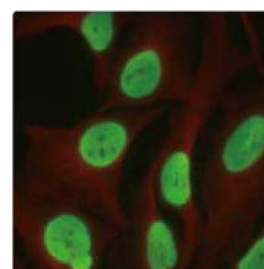
Cat. No.	Product Name	Host & Clonality	Reactivity	Application
GTX109642	HDAC2 antibody	Rb pAb	Hu, Ms, Rat	ICC/IF, IHC-P, IP, WB, ChIP assay
GTX109679	HDAC3 antibody [C3], C-term	Rb pAb	Hu	ICC/IF, IHC-P, IP, WB, ChIP assay
GTX21440	HDAC6 antibody	Rb pAb	Hu, Ms, Rat	IHC-P, WB, ChIP assay
GTX21441	HDAC7 antibody	Rb pAb	Hu, Ms, Rat	IHC-Fr, WB, ChIP assay
GTX114179	HDAC7 antibody [C2C3], C-term	Rb pAb	Hu	ICC/IF, IHC-P, IP, WB
GTX117561	HP1 gamma antibody	Rb pAb	Hu	ICC/IF, IHC-P, IP, WB
GTX82550	JHDM1a/FBXL11 Antibody, Internal	Rb pAb	Hu	ELISA, IHC, WB
GTX102226	KAP1 antibody [N3C2], Internal	Rb pAb	Hu, Ms	ICC/IF, IHC-P, IP, WB, ChIP assay
GTX121246	KDM6A antibody [N2C1], Internal	Rb pAb	Hu	ICC/IF, IHC-P, WB
GTX107234	L3MBTL2 antibody	Rb pAb	Hu	IP, WB, ChIP assay
GTX83263	LSD1/AOF2 antibody [1B2E5]	Ms mAb	Hu, Ms, Mk	ELISA, IHC, WB
GTX113869	NCOA3 antibody [N1N2], N-term	Rb pAb	Hu	ICC/IF, IHC-P, WB
GTX23482	NCoR antibody	Rb pAb	Hu, Ms	ICC/IF, IHC-P, IP, WB, ChIP assay
GTX113945	PAD4 antibody	Rb pAb	Hu	ICC/IF, IHC-P, WB, ChIP assay
GTX23768	PRMT1 antibody	Rb pAb	Hu	ELISA, IHC-P, WB, ChIP assay
GTX23763	PRMT2 antibody	Rb pAb	Hu	ELISA, IHC-P, WB, ChIP assay
GTX23765	PRMT3 antibody	Rb pAb	Hu	ELISA, IHC-P, WB, ChIP assay
GTX23766	PRMT5 antibody	Rb pAb	Hu, Ms	ELISA, IHC-P, WB, ChIP assay
GTX115994	PRMT5 antibody [N1N3]	Rb pAb	Hu	ICC/IF, IHC-P, WB
GTX111294	RUVBL1 antibody	Rb pAb	Hu	ICC/IF, IHC-P, WB
GTX70250	SRC1 antibody [1135]	Ms mAb	Hu, Ms, Mk, Rat	IP, WB, ChIP assay



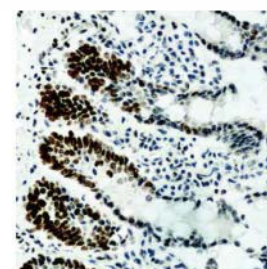
H2A.X S139 pho (GTX628789):
ICC analysis using Histone H2A.X S139 pho antibody (GTX628789; red) on HeLa cells



H2BK20ac (GTX128962):
WB analysis using H2BK20ac antibody (GTX128962) on HeLa cell lysates. Cells were treated with either (A) DMSO or (B) Trichostatin A



H2BK5ac (GTX128963):
ICC analysis using H2BK5ac antibody (GTX128963; green) on TSA-treated HeLa cells.

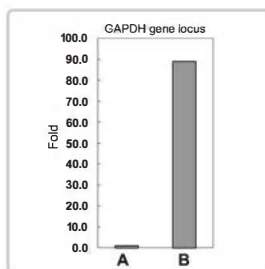


H3K9ac (GTX12178):
IHC analysis using H3K9ac antibody (GTX12178) on the paraffin-embedded rat lung tissue section.

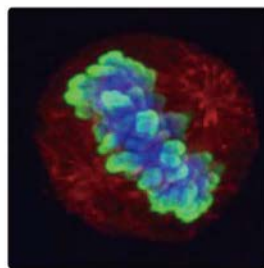
Epigenetics Histone Modifications

Citation

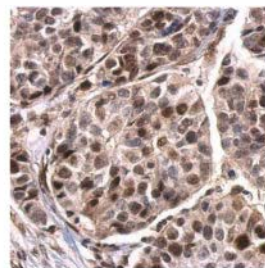
Cat. No.	Product Name	Host & Clonality	Reactivity	Application
GTX114462	Histone H1 antibody	Rb pAb	Hu, Ms, Rat	ICC/IF, IHC-P, WB
GTX24269	Histone H1 antibody [0.T.60]	Ms mAb	Hu	ELISA, ICC/IF, WB
GTX122561	Histone H1.2 antibody	Rb pAb	Hu	ICC/IF, IHC-P, WB
C GTX121669	Histone H1.4 (phospho Ser35) antibody	Rb pAb	Hu	ICC/IF, IHC-P, WB
GTX128961	Histone H2A.2 (acetyl Lys5) antibody	Rb pAb	Hu	Dot, ICC/IF, WB
GTX102073	Histone H2A.V antibody	Rb pAb	Ms	WB
GTX628789	Histone H2A.X (phospho S139) antibody [GT231 1]	Ms mAb	Hu, Ms	ICC/IF, IP, WB
GTX127340	Histone H2A.X (phospho Ser139) antibody	Rb pAb	Hu, Ms	ICC/IF, WB
C GTX108272	Histone H2A.x antibody	Rb pAb	Hu	ICC/IF, IHC-P, WB
GTX108273	Histone H2A.Z antibody	Rb pAb	Hu	ICC/IF, IHC-P, IP, WB, ChIP assay
GTX128962	Histone H2B (acetyl Lys20) antibody	Rb pAb	Hu	Dot, ICC/IF, WB
GTX128963	Histone H2B (acetyl Lys5) antibody	Rb pAb	Hu	Dot, ICC/IF, WB
GTX122648	Histone H3 (acetyl Lys 9, Lys14) antibody	Rb pAb	Hu, Ms	Dot, WB
GTX128943	Histone H3 (acetyl Lys18) antibody	Rb pAb	Hu	Dot, ICC/IF, WB
GTX128944	Histone H3 (acetyl Lys27) antibody	Rb pAb	Hu	Dot, ICC/IF, WB
C GTX50903	Histone H3 (acetyl Lys27) antibody [MABI0309]	Ms mAb	Hu	ELISA, ICC/IF, WB, ChIP assay
GTX61722	Histone H3 (acetyl Lys56) antibody [EPR996Y]	Rb mAb	Hu, Ms, Rat	ICC/IF, IHC-M, IHC-P, WB
C GTX12178	Histone H3 (acetyl Lys9) antibody	Rb pAb	Hu, Ms, Cow, Rat, XI	ICC/IF, IHC-P, WB
C GTX12179	Histone H3 (acetyl Lys9) antibody [AH3-120]	Ms mAb	Hu, Ms, Dm, Rat	ELISA, ICC/IF, IHC, WB
C GTX50898	Histone H3 (acetyl Lys9) antibody [MABI0305]	Ms mAb	Hu	ICC/IF, WB, ChIP assay



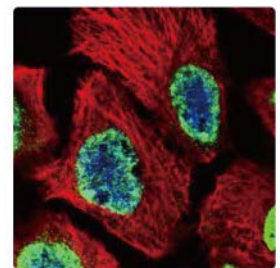
H3K4me2 (GTX121915):
ChIP analysis using H3K4me2 antibody (GTX121915) on GAPDH gene locus with cross-linked chromatin from HeLa cells



H3S10pho (GTX128116):
ICC analysis using H3S10pho antibody (GTX128116; green) on HeLa cells



H3S28pho (GTX128953):
IHC analysis using H3S28pho antibody (GTX128953) on the paraffin-embedded breast carcinoma tissue section.



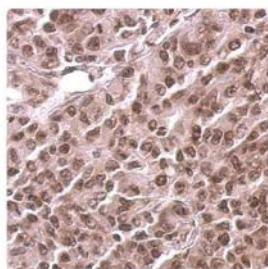
H3K27me3 (GTX121184):
ICC analysis using H3K27me3 antibody (GTX121184; green) on A431 cells

Citation

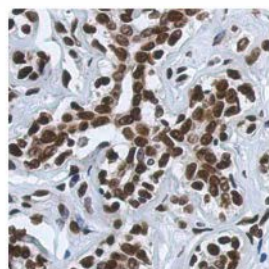
Cat. No.	Product Name	Host & Clonality	Reactivity	Application
GTX124113	Histone H3 (di-methyl Arg17) antibody	Rb pAb	Hu	Dot, IHC-P, WB
GTX124114	Histone H3 (di-methyl Arg2) antibody	Rb pAb	Hu	Dot, WB
C GTX121915	Histone H3 (di-Methyl Lys4) antibody	Rb pAb	Hu	ICC/IF, IHC-P, IP, WB, ChIP assay
C GTX50899	Histone H3 (di-methyl Lys9) antibody [MABI0307]	Ms mAb	Hu	ELISA, ICC/IF, WB, ChIP assay
C GTX50902	Histone H3 (mono-methyl Lys4) antibody [MABI0302]	Ms mAb	Hu	ELISA, ICC/IF, WB, ChIP assay
GTX128116	Histone H3 (phospho Ser10) antibody	Rb pAb	Hu, Ms	ICC/IF, IHC-P, WB

Citation

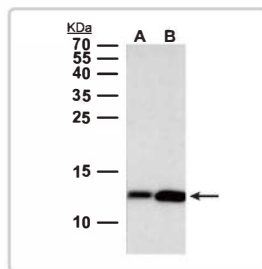
Cat. No.	Product Name	Host & Clonality	Reactivity	Application
GTX12181	Histone H3 (phospho Ser10, acetyl Lys9) antibody	Rb pAb	Hu, Ms, Cow, Rat, XI	ICC/IF, IHC-P, WB
GTX128953	Histone H3 (phospho Ser28) antibody	Rb pAb	Hu	ICC/IF, IHC-P, WB
GTX61749	Histone H3 (phospho Thr3) antibody [EP1702Y]	Rb mAb	Hu	ICC/IF, IHC-P, WB
GTX121184	Histone H3 (tri-Methyl Lys27) antibody	Rb pAb	Hu	ICC/IF, IHC-P, WB
GTX50901	Histone H3 (tri-methyl Lys27) antibody [MAB10323]	Ms mAb	Hu	ELISA, ICC/IF, WB, ChIP assay
GTX50908	Histone H3 (tri-methyl Lys36) antibody [MAB10333]	Ms mAb	Hu	ELISA, ICC/IF, WB, ChIP assay
GTX128954	Histone H3 (tri-Methyl Lys4) antibody	Rb pAb	Hu	Dot, ICC/IF, WB
GTX50897	Histone H3 (tri-methyl Lys4) antibody [MAB10304]	Ms mAb	Hu	ELISA, ICC/IF, WB, ChIP assay
GTX121677	Histone H3 (tri-Methyl Lys9) antibody	Rb pAb	Hu	WB



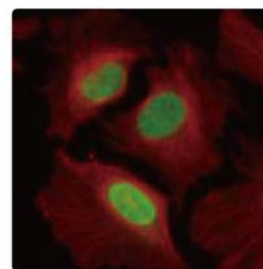
H3.1 (GTX127985):
IHC analysis using H3.1 antibody (GTX127985) on the paraffin-embedded AGS xenograft.



H4 Pan acetyl (GTX122653):
IHC analysis using H4 Pan acetyl antibody (GTX122653) on the paraffin-embedded breast carcinoma.



H4K8ac (GTX128957):
WB analysis using H4K8ac antibody (GTX128957) on HeLa cell lysates. Cells were treated with either (A) DMSO or (B) Trichostatin A.

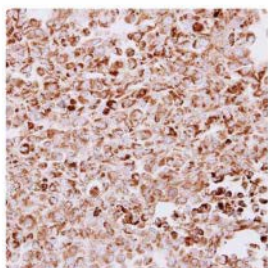


H4K20me1 GTX128959:
ICC analysis using H4K20me1 antibody (GTX128959; green) on HeLa cells.

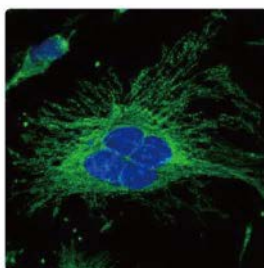
Citation

Cat. No.	Product Name	Host & Clonality	Reactivity	Application
GTX50900	Histone H3 (tri-methyl Lys9) antibody [MAB10308]	Ms mAb	Hu	ELISA, ICC/IF, WB, ChIP assay
GTX122148	Histone H3 antibody	Rb pAb	Hu, Mk	IHC-P, WB
GTX12177	Histone H3 mono-methyl Lys9 antibody	Rb pAb	Hu, Ms, Cow, Rat, XI	IHC-P, WB
GTX50231	Histone H3.1 (Phospho Ser10) Antibody	Rb pAb	Hu, Ms, Rat	ICC/IF, IHC, IHC-P, WB
GTX50481	Histone H3.1 Antibody	Rb pAb	Hu, Ms, Rat	ICC/IF, WB
GTX127985	Histone H3.1 antibody	Rb pAb	Hu	IHC-P, WB
GTX112955	Histone H3.3 antibody	Rb pAb	Hu, Ms, Rat	IHC-P, WB
GTX101754	Histone H3.3 antibody	Rb pAb	Hu, Ms	ICC/IF, WB
GTX115549	Histone H3.3B antibody	Rb pAb	Hu, Ms, Rat	ICC/IF, IHC-P, WB
GTX122653	Histone H4 (acetyl Lys5, Lys8, Lys12, Lys16) antibody	Rb pAb	Hu, Ms, Rat	Dot, ICC/IF, IHC-P, WB
GTX128957	Histone H4 (acetyl Lys8) antibody	Rb pAb	Hu	Dot, ICC/IF, WB
GTX128959	Histone H4 (mono methyl Lys20) antibody	Rb pAb	Hu	Dot, ICC/IF, WB
GTX128960	Histone H4 (tri methyl Lys20) antibody	Rb pAb	Hu	Dot, ICC/IF, WB

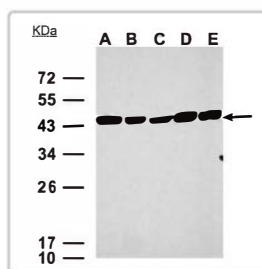
Metabolism



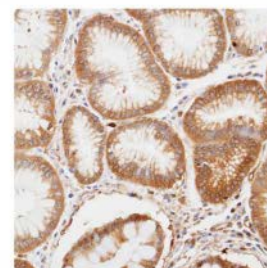
Aconitase 2 (GTX109736):
IHC analysis using Aconitase2 antibody (GTX109736) on the paraffin-embedded HT29 xenograft



Aconitase 2 (GTX109736):
ICC analysis using Aconitase2 antibody (GTX109736; green) on HeLa cells.



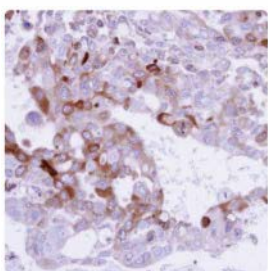
CS (GTX628143):
WB analysis using Citrate Synthetase antibody (GTX628143) on (A) 293T, (B) A431, (C) HeLa, (D) HepG2, and (E) A375 cell lysates



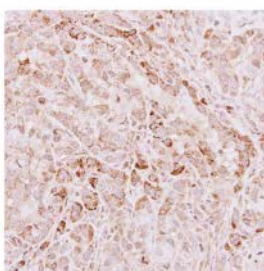
ENO1 (GTX101803):
IHC analysis using ENO1 antibody (GTX101803) on the paraffin-embedded gastric tissue section

Citation

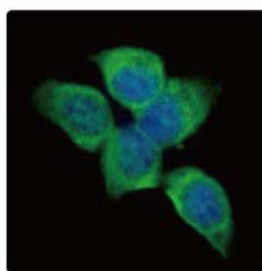
Cat. No.	Product Name	Host & Clonality	Reactivity	Application
GTX104625	15-PGDH antibody [C2C3], C-term	Rb pAb	Hu	ICC/IF, IHC-P, WB
GTX100488	ACADM antibody	Rb pAb	Hu, Ms, Rat	ICC/IF, IHC-P, WB
GTX109736	Aconitase 2 antibody [C1C3]	Rb pAb	Hu, Ms	ICC/IF, IHC-P, WB
C GTX107413	Acylglycerol kinase antibody	Rb pAb	Hu, Ms	ICC/IF, IHC-P, WB
GTX107613	Adenylate kinase 2 antibody [N1C3]	Rb pAb	Hu, Ms	ICC/IF, IHC-P, WB
C GTX104430	Adenylate kinase 3 antibody [N1C3]	Rb pAb	Hu	ICC/IF, IHC, IHC-P, WB
GTX118578	ADI1 antibody	Rb pAb	Hu, Ms, Rat	ICC/IF, IHC-P, WB
GTX109571	AKR1B10 antibody	Rb pAb	Hu, Ms, Rat	ICC/IF, IHC-P, WB
GTX104627	AKR1C3 antibody [C2C3], C-term	Rb pAb	Hu, Rat	ICC/IF, IHC-P, WB
GTX112477	alanyl-tRNA synthetase antibody [N3C2], Internal	Rb pAb	Hu, Ms	IHC-P, WB
GTX123973	ALDH1A1 antibody	Rb pAb	Hu, Ms, Rat	ICC/IF, IHC-P, WB
GTX114914	Aldolase B antibody	Rb pAb	Hu, Ms, Rat	ICC/IF, IHC-P, WB
GTX113629	ASL antibody	Rb pAb	Hu, Ms	ICC/IF, IHC-P, WB
GTX112387	ATP citrate lyase antibody [N1N2], N-term	Rb pAb	Hu	ICC/IF, IHC-P, WB
GTX102983	BHMT antibody [N3C3]	Rb pAb	Hu	ICC/IF, IHC-P, WB
GTX628143	Citrate synthetase antibody [GT1761]	Ms mAb	Hu, Ms, Zfsh	IHC-P, WB
GTX110624	Citrate synthetase antibody [N2C3]	Rb pAb	Hu, Ms	ICC/IF, IHC-P, WB
GTX107934	CoA synthase antibody [N3C3-3]	Rb pAb	Hu, Ms	ICC/IF, IHC-P, WB
C GTX62145	Cytochrome C Oxidase subunit 2 antibody [EPR3314]	Rb mAb	Hu	FACS, ICC/IF, IHC-P, IP, WB
GTX107636	DCK antibody	Rb pAb	Hu, Ms, Rat	ICC/IF, IHC-P, WB
GTX101803	ENO1 antibody [N3C3]	Rb pAb	Hu, Ms	ICC/IF, IHC-P, WB



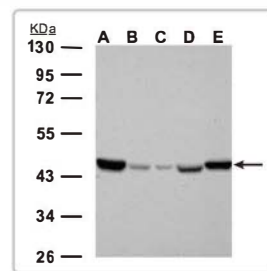
Glutamine Synthetase (GTX109121):
IHC analysis using Glutamine Synthetase antibody (GTX109121) on the paraffin-embedded H441 xenograft



Glycine Dehydrogenase (GTX110267):
IHC analysis using Glycine Dehydrogenase antibody (GTX110267) on the paraffin-embedded A549 xenograft



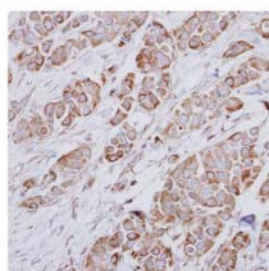
IDH1 (GTX114484):
ICC analysis using IDH1 antibody (GTX114484) on A431 cells



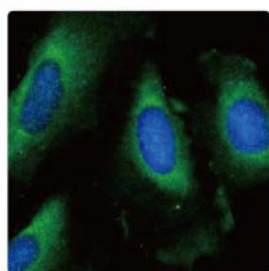
IDH2 (GTX628487):
WB analysis using IDH2 antibody (GTX628487) on (A) Jurkat, (B) Raji, (C) K562, (D) THP-1, and (E) NCI-H929 cell lysates

Citation

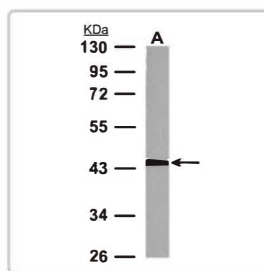
Cat. No.	Product Name	Host & Clonality	Reactivity	Application
GTX109360	EPHX1 antibody	Rb pAb	Hu	ICC/IF, IHC-P, WB
GTX109095	ETHE1 antibody	Rb pAb	Hu	ICC/IF, IHC-P, WB
GTX109833	Fatty Acid Synthase antibody [N1], N-term	Rb pAb	Hu, Ms, Rat	ICC/IF, IHC-P, WB
GTX105301	FDPS antibody	Rb pAb	Hu, Ms, Rat	ICC/IF, IHC-P, WB
GTX110128	Fumarate hydratase antibody [N2C2], Internal	Rb pAb	Hu, Ms, Rat	ICC/IF, IHC-P, WB
GTX109121	Glutamine synthetase antibody	Rb pAb	Hu, Ms, Rat	IHC-P, WB
GTX117326	Glutathione S-transferase kappa 1 antibody	Rb pAb	Hu	ICC/IF, IHC-P, WB
GTX110267	Glycine dehydrogenase antibody [N3C2-2], Internal	Rb pAb	Hu	ICC/IF, IHC-P, WB
GTX103948	GPD1 antibody	Rb pAb	Hu, Ms	ICC/IF, IHC-P, WB
GTX113722	GSTA1 antibody	Rb pAb	Hu, Ms	ICC/IF, IHC-P, WB
GTX112695	GSTP1 antibody	Rb pAb	Hu, Ms, Rat	ICC/IF, IHC-P, WB
GTX109250	GSTT1 antibody	Rb pAb	Hu, Ms, Rat	IHC-P, WB
GTX105167	HADH antibody	Rb pAb	Hu, Ms, Rat	ICC/IF, IHC-P, WB
GTX113727	HADHA antibody [N2C1], Internal	Rb pAb	Hu, Ms, Rat	ICC/IF, IHC-P, WB
GTX113466	HPRT antibody	Rb pAb	Hu, Ms	ICC/IF, IHC-P, WB
GTX114978	HSD17B4 antibody	Rb pAb	Hu, Ms	ICC/IF, IHC-P, WB
GTX114484	IDH1 antibody	Rb pAb	Hu, Ms	ICC/IF, IHC-P, IP, WB
GTX628487	IDH2 antibody [GT673]	Ms mAb	Hu, Ms, Rat	ICC/IF, IHC-P, WB
GTX101416	Lactate Dehydrogenase antibody	Rb pAb	Hu, Ms, Rat	ICC/IF, IHC-P, WB
GTX110037	MCD antibody [N2C1], Internal	Rb pAb	Hu, Ms	ICC/IF, IHC-P, WB
GTX105870	MDH2 antibody	Rb pAb	Hu, Ms, Rat	IHC-P, WB
GTX104122	ME1 antibody	Rb pAb	Hu, Ms, Rat	ICC/IF, IHC-P, WB
GTX104990	MTHFD2 antibody [N1C3]	Rb pAb	Hu	ICC/IF, IHC-P, WB



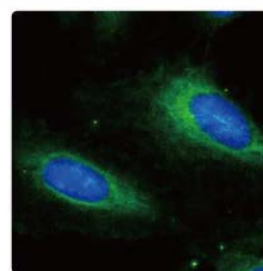
NDUFA10 (GTX114572):
IHC analysis using NDUFA10 antibody (GTX114572) on the paraffin-embedded breast carcinoma



PGK1 (GTX107614):
ICC analysis using PGK1 antibody (GTX107614; green) on HeLa cells.



PGK1 (GTX107614):
WB analysis using PGK1 antibody (GTX107614) on rat liver lysates.



SOD1 (GTX100659):
ICC analysis using SOD1 antibody (GTX100659; green) on HeLa cells

Citation

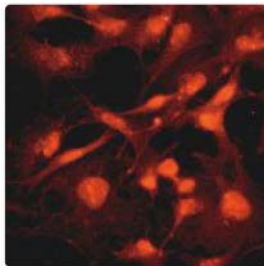
Cat. No.	Product Name	Host & Clonality	Reactivity	Application
GTX61640	Na ⁺ /K ⁺ ATPase α antibody [EP1845Y], N-term	Rb mAb	Hu, Ms, Rat	FACS, IHC-P, WB
GTX114572	NDUFA10 antibody	Rb pAb	Hu, Ms	ICC/IF, IHC-P, WB
GTX111880	NDUFB5 antibody	Rb pAb	Hu, Ms	ICC/IF, IHC-P, WB
GTX113787	NDUFS1 antibody	Rb pAb	Hu, Ms, Rat	ICC/IF, IHC-P, WB
GTX105662	NDUFS4 antibody	Rb pAb	Hu, Ms, Rat	ICC/IF, IHC-P, WB
GTX103015	NNT antibody	Rb pAb	Hu	ICC/IF, IHC-P, WB
GTX100235	NQO1 antibody [C2C3], C-term	Rb pAb	Hu, Ms, Rat	ICC/IF, IHC-P, WB
GTX109936	Pancreatic Lipase antibody [N1C1]	Rb pAb	Hu	ICC/IF, IHC-P, WB
GTX107755	PFKFB4 antibody	Rb pAb	Hu, Ms, Rat	IHC-P, WB

Metabolism

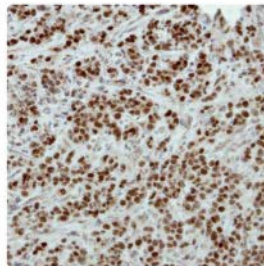
Citation

Cat. No.	Product Name	Host & Clonality	Reactivity	Application
GTX107614	PGK1 antibody	Rb pAb	Hu, Ms, Rat, Yeast	ELISA, ICC/IF, IHC-P, WB
Ⓢ GTX105618	PP1C gamma antibody [N1C2]	Rb pAb	Hu, Ms	ICC/IF, IHC-P, WB
Ⓢ GTX104015	Pyruvate Dehydrogenase E1 alpha antibody	Rb pAb	Hu, Ms, Rat	ICC/IF, IHC-P, WB
GTX119625	Pyruvate Dehydrogenase E1 beta subunit antibody	Rb pAb	Hu, Ms	IHC-P, WB
GTX107977	Pyruvate Kinase (muscle) antibody	Rb pAb	Hu, Ms, Rat	ICC/IF, IHC-P, WB
GTX107681	Pyruvate Kinase (muscle) antibody	Rb pAb	Hu, Ms, Rat	IHC-P, WB
GTX107395	Selenophosphate synthetase 1 antibody	Rb pAb	Hu	ICC/IF, IHC-P, WB
GTX100659	SOD1 antibody	Rb pAb	Hu, Ms, Rat	ICC/IF, IHC-P, WB
GTX116093	SOD2 antibody	Rb pAb	Hu, Ms, Rat	ICC/IF, IHC-P, WB
GTX113553	SREBP2 antibody [C1C2], Internal	Rb pAb	Hu	ICC/IF, WB
GTX109459	TKTL1 antibody [N1C1]	Rb pAb	Hu	ICC/IF, IHC-P, WB
GTX112784	UCP1 antibody	Rb pAb	Hu, Ms	IHC-P, WB
Ⓢ GTX10983	UCP1 antibody	Rb pAb	Hu, Ms, Cow, Dog, Mk, Rb, Rat, shp, Cat	IHC, IHC-P, WB
GTX113980	UGT1A6 antibody	Rb pAb	Hu, Ms	IHC-P, WB
GTX128980	Visfatin antibody	Rb pAb	Hu	IHC-P, WB

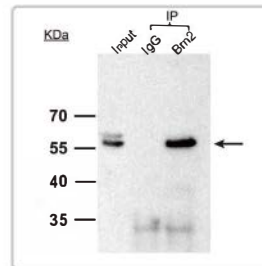
Neurosciences



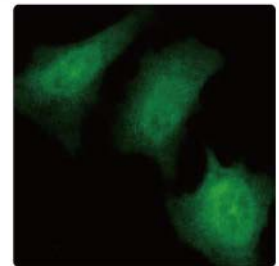
BDNF (GTX62495):
ICC analysis using BDNF antibody (GTX62495) on PC12 cells.



BRN2 (GTX114650):
IHC analysis using BRN2 antibody (GTX114650) on the paraffin-embedded TOV-21G xenograft.



BRN2 (GTX114650):
IP/IB analysis using BRN2 antibody (GTX114650) and EasyBlot anti-rabbit IgG (GTX221666-01) on 293T cell lysates.



Cholin A (GTX113164):
ICC analysis using Choline Acetyltransferase antibody (GTX113164) on HeLa cells.

Citation

Cat. No.	Product Name	Host & Clonality	Reactivity	Application
GTX109090	14-3-3 epsilon antibody [N1C3]	Rb pAb	Hu, Ms	ICC/IF, IHC-P, WB
GTX62495	BDNF antibody [EP1293]	Rb mAb	Hu, Ms, Rat	ICC/IF, WB
GTX108993	BIN1 antibody [N1C1-2]	Rb pAb	Hu	ICC/IF, IHC-P, WB
Ⓢ GTX114650	Bm2 antibody	Rb pAb	Hu, Ms	ICC/IF, IHC, IHC-P, IP, WB, ChIP assay
GTX41976	CaMKII antibody [6G9]	Rb pAb	Ms	ICC/IF, IHC-Fr, IHC-P, WB
GTX100219	Cannabinoid Receptor 1 antibody [C1C2], Internal	Rb pAb	Hu, Ms, Rat	IHC-P, WB
GTX113164	Choline Acetyltransferase antibody [N1N3]	Rb pAb	Hu	ICC/IF, WB

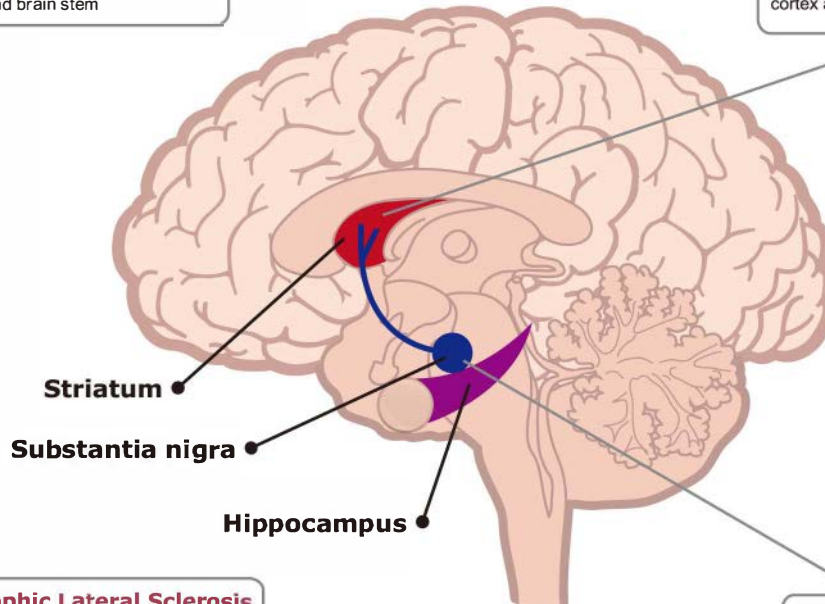
Neurodegenerative Disorder

Alzheimer's Disease

Affects the cortex, hippocampus, basal forebrain and brain stem

Huntington's Disease

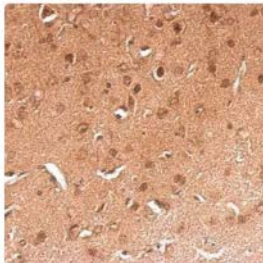
Affects the striatum, basal ganglia, cortex and others

**Amyotrophic Lateral Sclerosis**

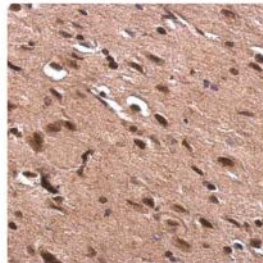
Affects spinal motor neurons and the motor cortex

Parkinson's Disease

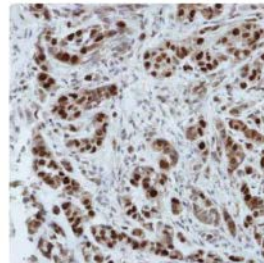
Affects dopaminergic neurons



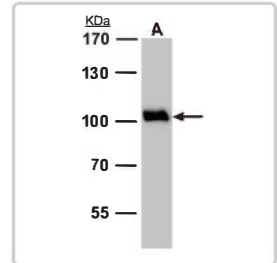
A2BP1 (GTX109989):
IHC analysis using A2BP1 antibody (GTX109989) on the paraffin-embedded mouse fore brain tissue section.



AChE (GTX101648):
IHC analysis using AChE antibody (GTX101648) on the paraffin-embedded rat fore brain tissue section



FEN1 (GTX101777):
IHC analysis using FEN1 antibody (GTX101777) on the paraffin-embedded A549 xenograft.

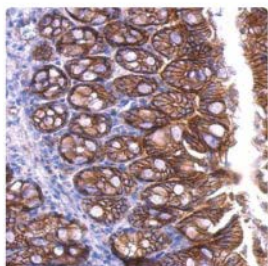


VCP (GTX113030):
WB analysis using VCP antibody (GTX113030) on rat brain extract/lysates

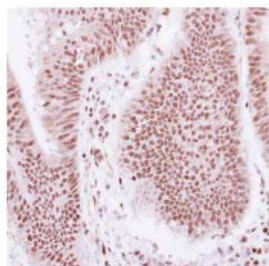
Citation

Cat. No.	Product Name	Host & Clonality	Reactivity	Application
GTX109989	A2BP1 antibody	Rb pAb	Hu, Ms, Rat	IHC-P, WB
GTX100479	ABAT antibody	Rb pAb	Hu, Ms, Rat	ICC/IF, IHC-P, WB
GTX101648	AChE antibody	Rb pAb	Hu, Ms, Rat	ICC/IF, IHC-P, WB
GTX101385	Adenosine kinase antibody	Rb pAb	Hu, Ms, Rat	ICC/IF, IHC-P, WB
GTX100053	Apolipoprotein E antibody [C2C3], C-term	Rb pAb	Hu	IHC-P, WB
Ⓢ GTX113389	Aspartoacylase antibody [N1C3-2]	Rb pAb	Hu	ICC/IF, IHC-P, WB
GTX62624	CHRM2 antibody [EPR4568]	Rb mAb	Hu, Ms, Rat	ICC/IF, IHC-P, IP, WB
GTX101777	FEN1 antibody	Rb pAb	Hu, Ms, Rat	ICC/IF, IHC-P, WB
Ⓢ GTX70185	FEN1 antibody [4E7]	Ms mAb	Hu, Ms	ICC/IF, IP, WB
GTX100589	HPA2 antibody [N3C3]	Rb pAb	Hu, Ms	IHC-P, WB
GTX113653	Nicotinic Acetylcholine Receptor alpha 4 antibody [N1C1]	Rb pAb	Hu	IHC-P, WB
Ⓢ GTX23611	RAGE antibody	Rb pAb	Hu, Ms, Rat	ICC/IF, IHC, IHC-F, WB
GTX114210	TARDBP antibody	Rb pAb	Hu, Ms, Rat	ICC/IF, IHC-P, IP, WB, ChIP-seq
GTX113030	VCP antibody [N1N2], N-term	Rb pAb	Hu, Ms, Rat	ICC/IF, IHC-P, WB

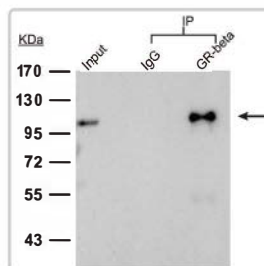
Signal Transduction



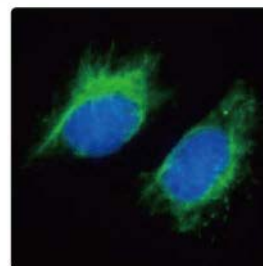
beta Catenin (GTX101435):
IHC analysis using beta Catenin antibody [N1N2-2], N-term (GTX101435) on the paraffin-embedded mouse colon tissue section.



Glucocorticoid Receptor beta (GTX113208):
IHC analysis using Glucocorticoid Receptor beta (GTX113208) on the paraffin-embedded colon carcinoma.



Glucocorticoid Receptor beta (GTX113208):
IP/IB analysis using Glucocorticoid Receptor beta (GTX113208) on HeLa cell lysates.

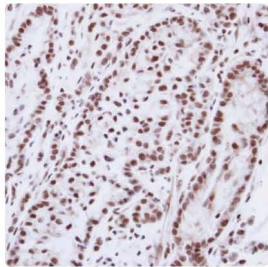


Inhibin beta A (GTX108405):
ICC analysis using Inhibin beta-A (GTX108405; green) on HeLa cells.

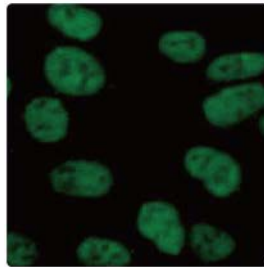
Citation

Cat. No.	Product Name	Host & Clonality	Reactivity	Application
GTX113297	14-3-3 beta antibody [N1C3]	Rb pAb	Hu, Ms	ICC/IF, IHC-P, WB
GTX113298	14-3-3 gamma antibody	Rb pAb	Hu, Ms	ICC/IF, IHC-P, WB
GTX100289	14-3-3 sigma antibody	Rb pAb	Hu, Ms, Rat	ICC/IF, IHC-P, WB
GTX101435	beta Catenin antibody [N1N2-2], N-term	Rb pAb	Hu, Ms, Rat	ICC/IF, IHC-P, WB
GTX116199	CECR1 antibody [N2C3]	Rb pAb	Hu	WB
GTX61170	c-Jun (phospho Ser63) antibody [Y172]	Rb mAb	Hu, Ms, Rat	ICC/IF, IHC-P, IP, WB
GTX41439	Delta-Like Protein 4 antibody [HMD4-2]	Hm mAb	Ms	FACS, IHC-Fr, IHC-P, Functional Assay
GTX114966	ELK3 antibody [N1C2]	Rb pAb	Hu	ICC/IF, IHC-P, WB
GTX113094	ERK2 antibody [N2C3]	Rb pAb	Hu, Ms, Rat, Pig	IHC-P, WB
GTX107734	FHL2 antibody [C2C3], C-term	Rb pAb	Hu	ICC/IF, IHC-P, WB
GTX113208	Glucocorticoid Receptor beta antibody	Rb pAb	Hu	ICC/IF, IHC-P, IP, WB
GTX100364	GPR120 antibody [N1N2], N-term	Rb pAb	Hu	IHC-P, WB
GTX103203	GRP94 antibody [N1N3]	Rb pAb	Hu, Ms	ICC/IF, IHC-P, WB
GTX111230	GSK3 beta antibody	Rb pAb	Hu, Ms	ICC/IF, IHC-P, WB
GTX108405	Inhibin beta A antibody	Rb pAb	Hu	ICC/IF, IHC-P, WB
GTX70203	Jab1 antibody [2A10.8]	Ms mAb	Hu, Ms, Rat, Dm	ICC/IF, IHC, IP, WB
GTX70207	Jab1 antibody [8H8.5]	Ms mAb	Hu, Ms, Dm	IP, WB
GTX61122	JAK2 (phospho Tyr1007/1008) antibody [E132]	Rb mAb	Hu, Ms, Rat	ICC/IF, IHC-M, IHC-P, IP, WB
GTX62033	LRP6 (phospho Ser1490) antibody [EP2360Y]	Rb mAb	Hu	ICC/IF, WB
GTX102169	LZIP antibody [C1C3]	Rb pAb	Hu	IHC-P, WB
GTX111898	MATH1 antibody [C2C3], C-term	Rb pAb	Hu, Ms	ICC/IF, WB
GTX61116	MEK1/MEK2 (phospho Ser218/222) antibody [E237]	Rb mAb	Hu	ICC/IF, IHC-P, IP, WB

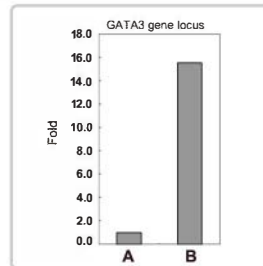
Signal Transduction



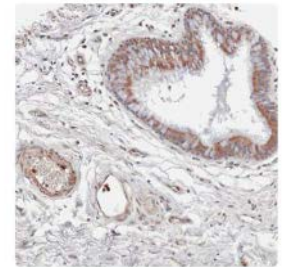
Progesterone Receptor (GTX116051):
IHC analysis using Progesterone Receptor [N1], N-term (GTX116051) on the paraffin-embedded A549 xenograft.



STAT3 (GTX110587):
ICC analysis using STAT3 antibody [C2C3] (GTX110587) on human ESCs.



STAT6 (GTX113273):
ChIP analysis using STAT6 antibody (GTX113273) on GATA3 gene locus with cross-linked chromatin from HeLa cells.

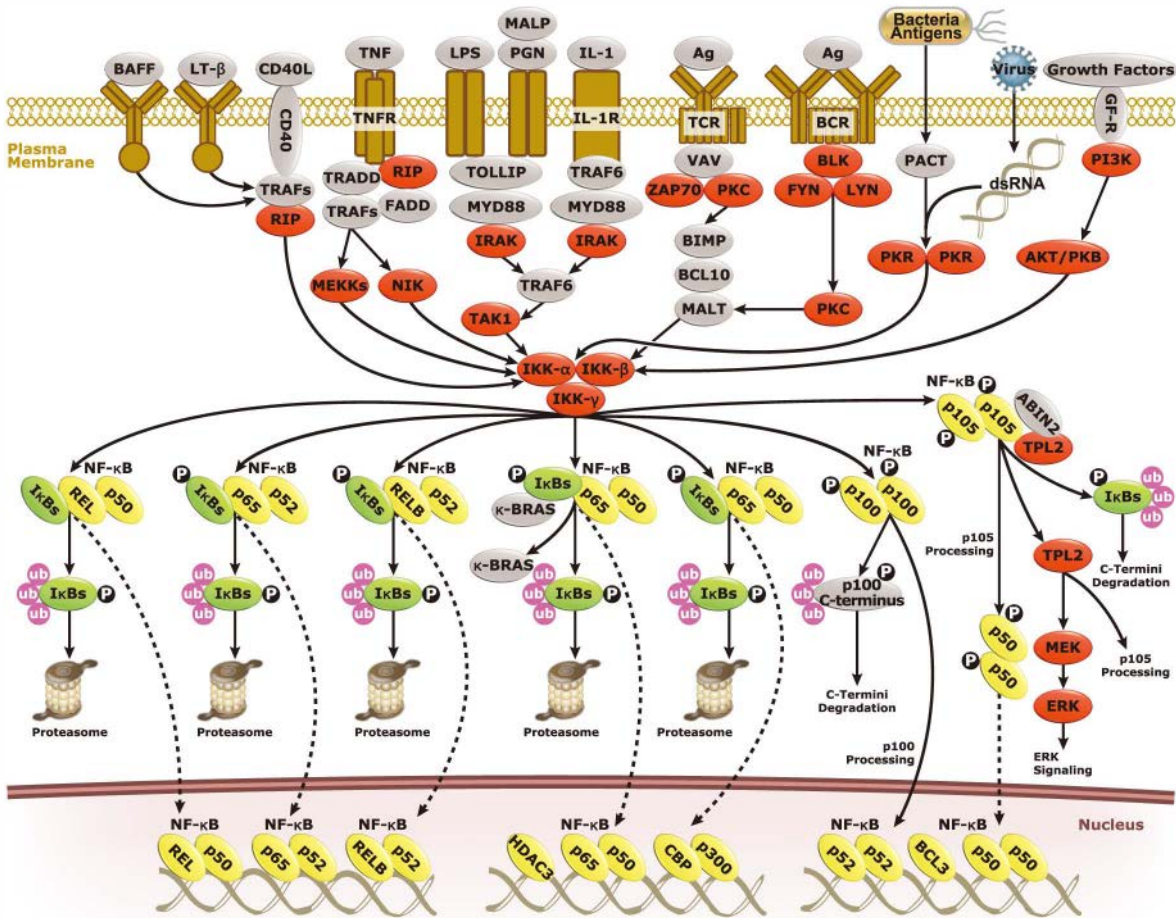


WNT11 (GTX105971):
IHC analysis using WNT11 antibody (GTX105971) on the paraffin-embedded lung SCC xenograft.

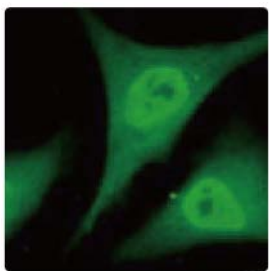
Citation

Cat. No.	Product Name	Host & Clonality	Reactivity	Application
GTX111338	MEK2 antibody	Rb pAb	Hu, Ms, Rat	ICC/IF, IHC-P, WB
GTX107910	NLK antibody [N3C3]	Rb pAb	Hu, Ms	ICC/IF, IHC-P, WB
GTX102866	N-myc interactor antibody [N1C3]	Rb pAb	Hu	IHC-P, WB
GTX101593	NOTCH2 antibody [C2], C-term	Rb pAb	Hu, Ms	WB
GTX113904	NR1D1 antibody	Rb pAb	Hu, Ms	ICC/IF, IHC-P, WB
GTX62142	p120 Catenin (phospho Ser268) antibody [EPR2380]	Rb mAb	Hu	ICC/IF, IHC-P, WB
GTX61056	p70 S6 Kinase (phospho Thr421/pS424) antibody [E135]	Rb mAb	Hu	IP, WB
GTX111076	PAK1 antibody [N2C2], Internal	Rb pAb	Hu, Ms, Rat	ICC/IF, IHC-P, WB
GTX61061	PKA, RII (phospho Ser96) antibody [E151]	Rb mAb	Hu, Ms, Rat	ICC/IF, IHC-P, IP, WB
GTX111293	PLCG2 antibody [N1N2], N-term	Rb pAb	Hu, Ms	ICC/IF, IHC-P, WB
GTX109744	PPM1A antibody	Rb pAb	Hu, Ms	ICC/IF, IHC-P, WB
GTX116051	Progesterone Receptor antibody [N1], N-term	Rb pAb	Hu	ICC/IF, IHC-P, WB
Ⓢ GTX119726	pygopus 2 antibody	Rb pAb	Hu, Ms	ICC/IF, IHC-P, IP, WB, ChIP assay
GTX110587	STAT3 antibody [C2C3], C-term	Rb pAb	Hu, Ms	ICC/IF, IHC-P, WB
GTX113273	STAT6 antibody	Rb pAb	Hu, Ms	IHC-P, IP, WB, ChIP assay
Ⓢ GTX103068	STIP1 antibody	Rb pAb	Hu, Ms, Rat	ICC/IF, IHC-P, WB
GTX110167	TCP1 epsilon antibody [N1C1]	Rb pAb	Hu, Ms	ICC/IF, IHC-P, WB
Ⓢ GTX100057	TRIM23 antibody [N1], N-term	Rb pAb	Hu, Ms	ICC/IF, IHC-P, WB
GTX61100	VEGFR-1 antibody [Y103], N-term	Rb mAb	Hu, Ms	ICC/IF, IHC, IHC-P, IP, WB
GTX105971	WNT11 antibody	Rb pAb	Hu, Ms	ICC/IF, IHC-P, WB
GTX129151	YAP1 antibody	Rb pAb	Hu	ICC/IF, IHC-P, WB
GTX61793	YAP65 (phospho Ser127) antibody [EP1675Y]	Rb mAb	Hu	IHC-P, WB
GTX61653	YAP65 antibody [EP1674Y], C-term	Rb mAb	Hu	FACS, ICC/IF, IHC-P, IP, WB
GTX116203	ZFYVE1 antibody [C1C3]	Rb pAb	Hu	IHC-P, WB

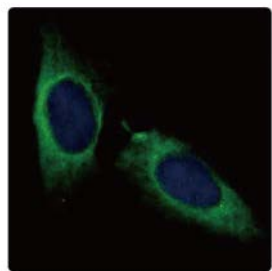
NFκB



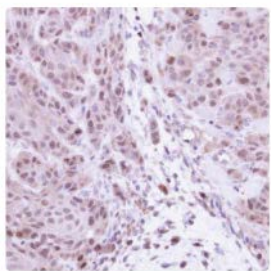
■ Kinase
 ■ Transcription Factor
 - - - - -> Translocation
 P Phospho
 ub Ubiquitin



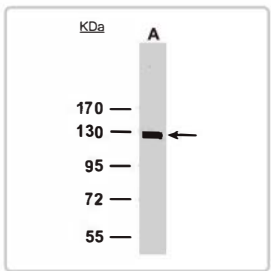
IκB alpha (GTX110521):
ICC analysis using IκBα antibody (GTX110521) on HeLa cells.



IKK gamma (GTX107582):
ICC analysis using IKK gamma antibody (GTX107582) on HeLa cells.



NFκB p105/p50 (GTX110585):
IHC analysis using NFκB p105/ p50 antibody (GTX110585) on the paraffin-embedded Cal27 xenograft.

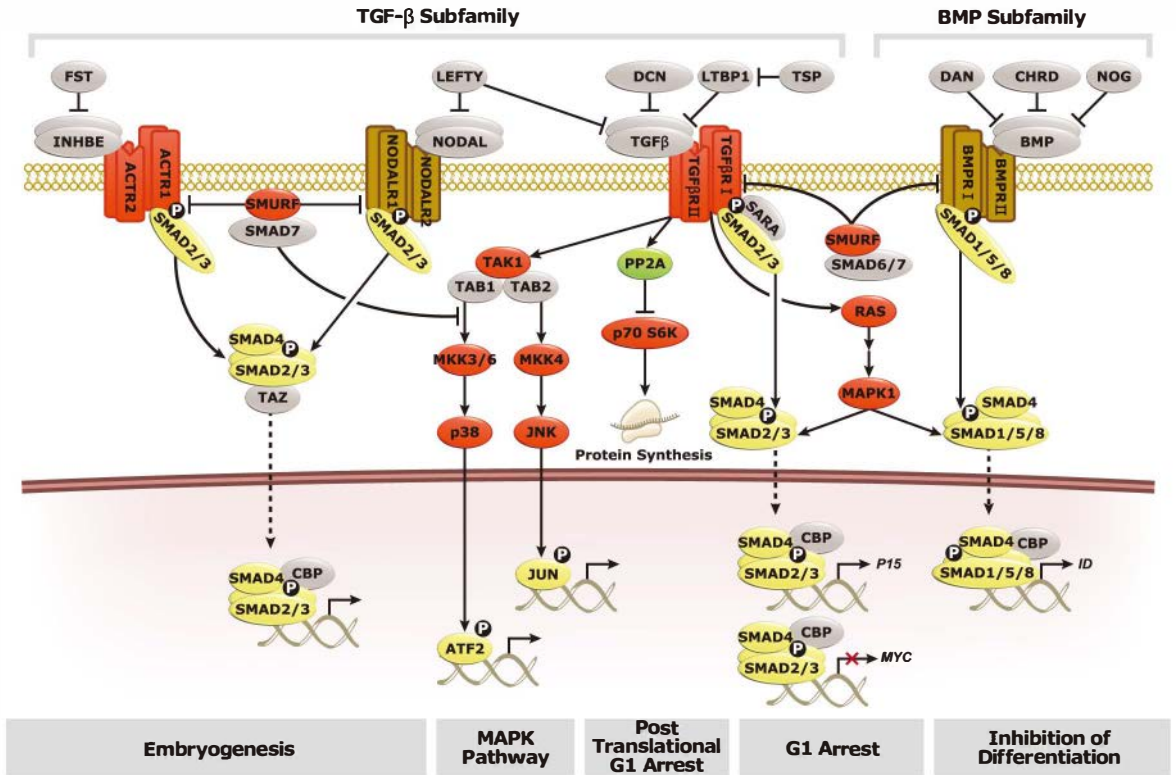


NFκB p105/p50 (GTX110585):
WB analysis using NFκB p105/ p50 antibody (GTX110585) on A431 cell lysates.

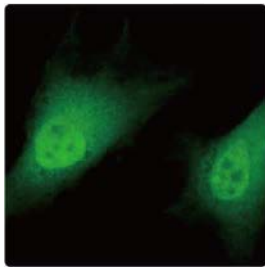
Citation

Cat. No.	Product Name	Host & Clonality	Reactivity	Application
GTX119681	ASC1 antibody [N1C1]	Rb pAb	Hu	IHC-P, WB
GTX112744	BCL10 antibody	Rb pAb	Hu, Ms	ICC/IF, IHC-P, WB
GTX110521	IκB alpha antibody	Rb pAb	Hu, Ms	ICC/IF, IHC-P, WB
GTX107582	IKK gamma antibody	Rb pAb	Hu, Ms, Rat	ICC/IF, IHC-P, WB
GTX110585	NFκB p105/p50 antibody	Rb pAb	Hu, Ms	ICC/IF, IHC, IHC-P, WB, ChIP assay
GTX61959	PKC alpha (phospho Thr497) antibody [EP2608Y]	Rb mAb	Hu, Ms, Rat	ICC/IF, IHC-P, IP, WB
GTX61784	PKC zeta (phospho Thr560) antibody [EP2037AY]	Rb mAb	Hu, Ms, Rat	ICC/IF, IHC-P, WB

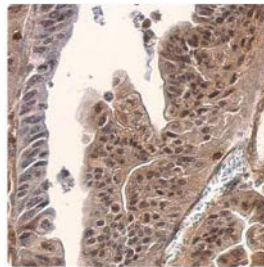
TGFβ/SMAD Signaling



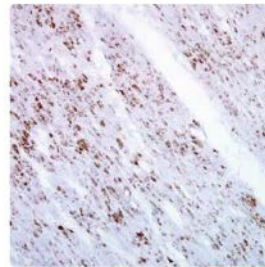
■ Kinase
 ■ Phosphatase
 ■ Transcription Factor
 - - - - -> Translocation
 P Phospho



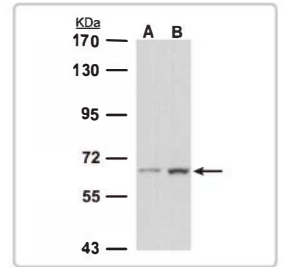
SMAD2 (GTX111131):
ICC analysis using SMAD2 antibody (GTX111131) on HeLa cells.



SMAD3 (GTX111123):
IHC analysis using SMAD3 antibody (GTX111123) on the paraffin-embedded gastric carcinoma tissue section.



SMAD4 (GTX112980):
IHC analysis using SMAD4 antibody (GTX112980) on the paraffin-embedded human ulcerative colitis tissue section.



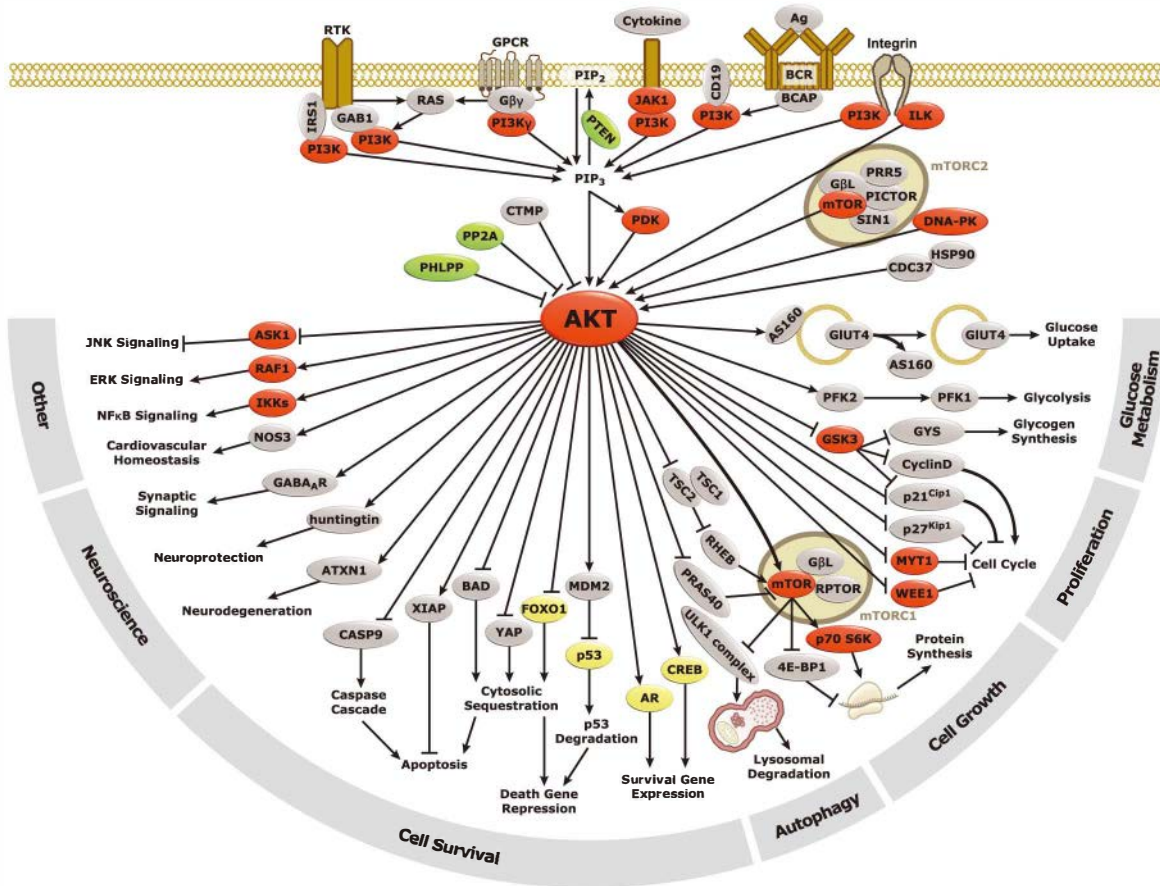
SMAD4 (GTX112980):
WB analysis using SMAD4 antibody (GTX112980) on (A) HeLa and (B) HepG2 cell lysates.

Citation

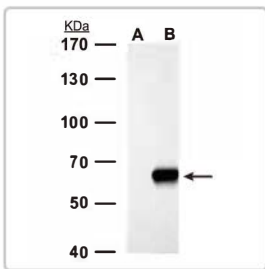
Cat. No.	Product Name	Host & Clonality	Reactivity	Application
GTX22529	CD105 antibody [MEM-226]	Ms mAb	Hu	FACS, IP, WB
GTX118619	RBPMS antibody	Rb pAb	Hu, Ms	ICC/IF, IHC-P, WB
GTX111131	SMAD2 antibody	Rb pAb	Hu	ICC/IF, IP, WB, ChIP assay
GTX111123	SMAD3 antibody	Rb pAb	Hu	ICC/IF, IHC-P, IP, WB, ChIP assay
GTX112980	SMAD4 antibody	Rb pAb	Hu, Ms	ICC/IF, IHC-P, WB
GTX21279	TGF beta antibody [TB21]	Ms mAb	Hu	ELISA, ICC/IF, IHC, IHC-Fr, IHC-P, Neut, WB

TGFβ/SMAD Signaling

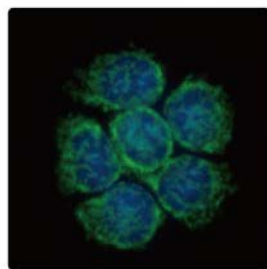
PI3K/AKT



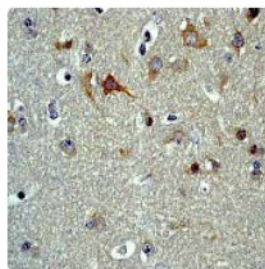
■ Kinase
 ■ Phosphatase
 ■ Transcription Factor



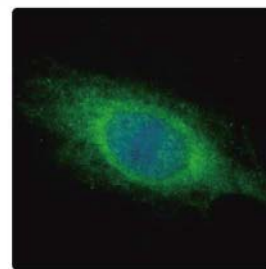
AKT 1 + 2 + 3 (GTX121937):
WB analysis using AKT 1+2+3 antibody (GTX121937) on 293T cell lysates. Cells were either (A) untransfected or (B) transfected with HA-human Akt.



mTOR (GTX101557):
ICC analysis using mTOR antibody (GTX101557; green) on MCF-7 cells.



PP2A (phospho Tyr307) (GTX61062):
IHC analysis using PP2A phospho Tyr307 antibody (GTX61062) on the paraffin-embedded human brain tissue section.

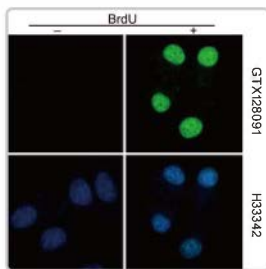
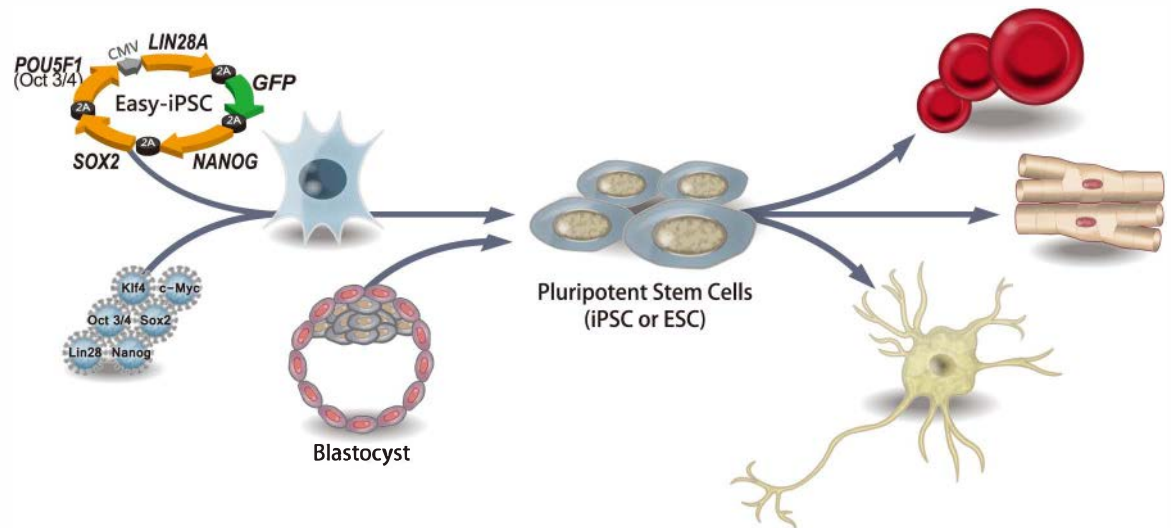


VPS34 (GTX107572):
ICC analysis using VPS34 antibody (GTX107572; green) on HeLa cells.

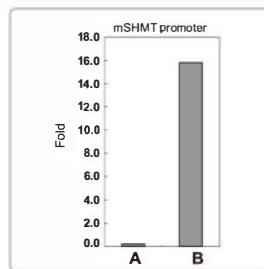
Citation

Cat. No.	Product Name	Host & Clonality	Reactivity	Application
GTX128414	AKT 1 + 2 + 3 (phospho Ser473/474/472) antibody	Rb pAb	Hu	WB
GTX121937	AKT 1 + 2 + 3 antibody [N3C2], Internal	Rb pAb	Hu, Ms, Rat	ICC/IF, IHC-P, WB
GTX61708	AKT1 (phospho Ser473) antibody [EP2109Y]	Rb mAb	Hu, Ms	ICC/IF, IHC-P, WB
GTX61798	AKT1 (phospho Thr308) antibody [EP2107Y]	Rb mAb	Hu, Ms	WB
GTX101557	mTOR antibody [C3], C-term	Rb pAb	Hu, Ms, Rat	IHC-P, WB
GTX630198	mTOR antibody [GT649]	Ms mAb	Hu	WB
GTX61062	PP2A (phospho Tyr307) antibody [E155]	Rb mAb	Hu, Ms, Rat	ICC/IF, IHC-P, IP, WB
GTX61780	PTEN (phospho Thr366/pS370) antibody [EP229]	Rb mAb	Hu	ICC/IF, IHC-P, IP, WB
GTX107572	VPS34 antibody	Rb pAb	Hu	ICC/IF, WB

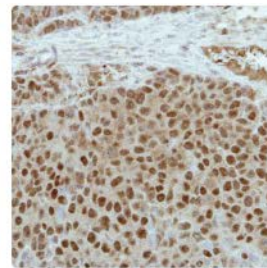
Stem Cell and Development



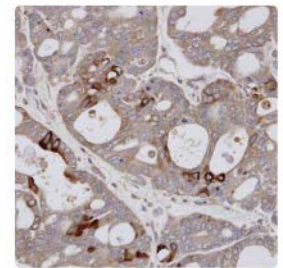
BrdU (GTX128091):
ICC analysis using BrdU antibody (GTX128091; green) on HeLa cells treated w/ w/o BrdU for 4 hours



c-Myc (GTX109636):
ChIP analysis using c-Myc antibody (GTX109636) on mSHMT promoter with cross-linked chromatin from 293T cells.



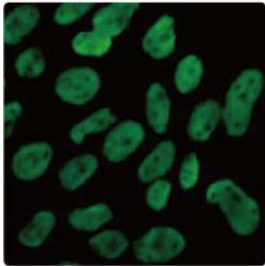
ERM (GTX114394):
IHC analysis using ERM antibody (GTX114394) on the paraffin-embedded PC14 xenograft.



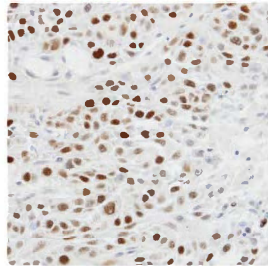
ESE1 (GTX100250):
IHC analysis using ESE1 antibody (GTX100250) on the paraffin-embedded NCI-N87 xenograft.

Citation

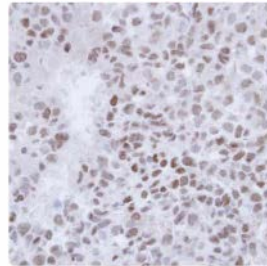
Cat. No.	Product Name	Host & Clonality	Reactivity	Application
GTX61379	Alpha-fetoprotein antibody, C-term	Rb pAb	Hu, Ms, Rat	IHC-P, WB
GTX21893	BrdU antibody	Shp pAb	-	ELISA, H, ICC/IF, IHC, IHC-Fr, IHC-P, IP
GTX128091	BrdU antibody	Rb pAb	-	ICC/IF
GTX28158	CD34 antibody [MEC14.7]	Rat mAb	Ms, Hu	ELISA, FACS, ICC/IF, IHC, IHC-Fr, IHC-P, IP, WB
GTX103436	c-Myc antibody	Rb pAb	Hu, Ms	IP, WB, ChIP assay
GTX20056	c-Myc antibody [9E11]	Ms mAb	Hu, Ms	ELISA, IHC-Fr, IHC-P, IP, WB, ChIP assay
GTX109636	c-Myc antibody [N1], N-term	Rb pAb	Hu, Ms	FACS, ICC/IF, WB, ChIP assay
GTX114835	COUP TF1 antibody [N3C3]	Rb pAb	Hu	WB
GTX114146	CREM antibody	Rb pAb	Hu, Ms, Rat	ICC/IF, WB
GTX114394	ERM antibody	Rb pAb	Hu	ICC/IF, IHC-P, WB
GTX100250	ESE1 antibody [C2C3], C-term	Rb pAb	Hu	ICC/IF, IHC-P, WB
GTX108013	EZH1 antibody [N1], N-term	Rb pAb	Hu	ICC/IF, IHC-P, WB



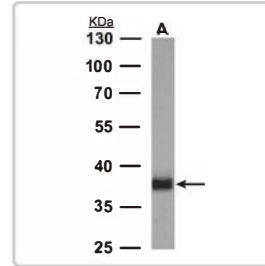
Oct4 (GTX101497):
ICC analysis using Oct4 antibody (GTX101497) on human ESCs.



p63 (GTX102425):
IHC analysis using p63 antibody (GTX102425) on the paraffin-embedded SCC4 xenograft.



SALL4 (GTX109983):
IHC analysis using SALL4 antibody (GTX109983) on the paraffin-embedded CL1-0 xenograft.

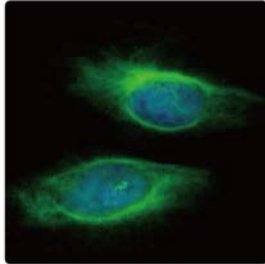


SOX2 (GTX627405):
WB analysis using SOX2 antibody (GTX627405) on ESC lysates.

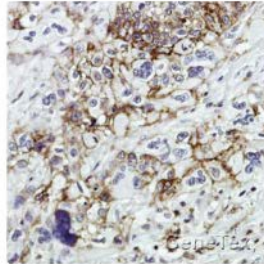
Citation

Cat. No.	Product Name	Host & Clonality	Reactivity	Application
GTX112937	FLI1 antibody	Rb pAb	Hu, Ms, Rat	ICC/IF, IHC-P, WB
Ⓢ GTX27523	Gli1 antibody	Rb pAb	Hu, Ms	ELISA, ICC/IF, IHC, IHC-P, WB
GTX124274	Gli1 antibody	Rb pAb	Hu, Ms	IHC-P, WB
GTX110523	Hex antibody	Rb pAb	Hu	WB
GTX104189	HMBOX1 antibody [N3C3]	Rb pAb	Hu	ICC/IF, IHC-P, WB
GTX101508	KLF4 antibody	Rb pAb	Hu, Ms	FACS, WB
GTX101893	LBP9 antibody [C1C3]	Rb pAb	Hu, Ms	ICC/IF, WB
GTX121923	LIN28 antibody	Rb pAb	Hu, Ms	FACS, IHC-P, WB
Ⓢ GTX100885	MyoD antibody [N1N3]	Rb pAb	Hu, Ms	WB, ChIP assay
Ⓢ GTX11083	Myosin skeletal slow antibody [NOQ7.5.4D]	Ms mAb	Hu, Ms, Cat, Cow, Dog, Gt, Gpig, Hm, Pig, Rb, Rat, Shp	EM, ELISA, IHC, IHC-P, RIA, WB
GTX627421	NANOG antibody [GT3312]	Ms mAb	Hu, Ms	FACS, WB
Ⓢ GTX100863	NANOG antibody [N3C3]	Rb pAb	Hu, Ms	ELISA, ICC/IF, WB
Ⓢ GTX101497	OCT4 antibody	Rb pAb	Hu, Ms	FACS, ICC/IF, IHC-P, IP, WB
GTX627419	OCT4 antibody [GT486]	Ms mAb	Hu, Ms	FACS, ICC/IF, IHC-P, IP, WB
Ⓢ GTX102425	p63 antibody [N2C1], Internal	Rb pAb	Hu, Ms, Rat	ICC/IF, IHC-P, WB
GTX101583	PAX8 antibody	Rb pAb	Hu	ICC/IF, IHC-P, IP, WB, ChIP assay
GTX114393	PEA3 antibody [N3C3]	Rb pAb	Hu	ICC/IF, IHC-P, WB
Ⓢ GTX109983	SALL4 antibody [C1C2], Internal	Rb pAb	Hu	ICC/IF, IHC-P, WB
GTX627405	SOX2 antibody [GT1352]	Ms mAb	Hu, Ms	FACS, ICC/IF, IHC-P, WB
GTX101507	SOX2 antibody [N1C3]	Rb pAb	Hu, Ms	FACS, ICC/IF, IHC-P, WB

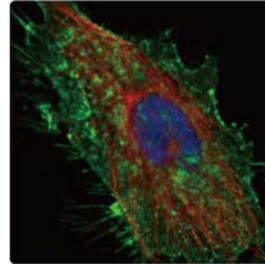
Immunology



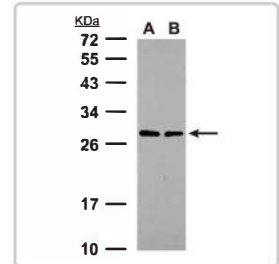
C3 (GTX101316):
ICC analysis using C3 antibody (GTX101316; green) on HeLa cells



CD44 (GTX102111):
IHC analysis using CD44 antibody (GTX102111) on the paraffin-embedded human pancreatic tumor section.



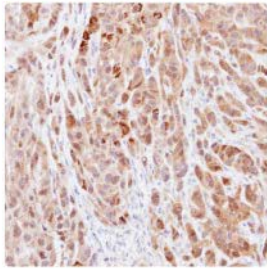
CD44 (GTX102111):
ICC analysis using CD44 antibody (GTX102111; green) and alpha-tubulin antibody (GTX11304; red) on HeLa cells



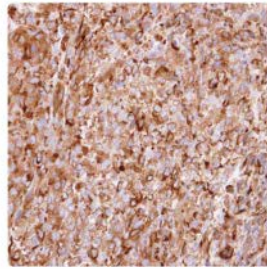
CTLA4 (GTX112765):
WB analysis using CTLA4 antibody (GTX112765) on (A) A549, and (B) HeLa cell lysates

Citation

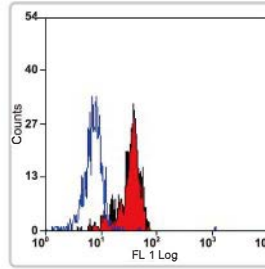
Cat. No.	Product Name	Host & Clonality	Reactivity	Application
GTX115209	AIMP1 antibody	Rb pAb	Hu, Ms	ICC/IF, IHC-P, WB
GTX13573	AIRE (isoforms 1 and 2) antibody, C-term	Gt pAb	Hu	ELISA, IHC, IHC-P, WB, ChIP assay
GTX62090	B7-H4 antibody [EP1165]	Rb mAb	Hu, Ms, Rat	ICC/IF, IHC-P, IP, WB
GTX111939	BCAP31 antibody	Rb pAb	Hu, Ms, Rat	ICC/IF, IHC-P, WB
GTX61791	Btk (phospho Tyr223) antibody [EP420Y]	Rb mAb	Hu, Ms, Rat	IP, WB
GTX101316	C3 antibody [C3], C-term	Rb pAb	Hu, Ms	ICC/IF, IHC-P, WB
GTX115378	CALCOCO2 antibody	Rb pAb	Hu	ICC/IF, IHC-P, WB
Ⓢ GTX45788	CCR2 antibody	Gt pAb	Ms, Hu, Rat	FACS, ICC/IF, IHC, IHC-P, WB
GTX63372	CD33 antibody [EPR4423]	Rb mAb	Hu, Ms, Rat	ICC/IF, IP, WB
Ⓢ GTX76011	CD41 antibody [MWRReg30]	Rat mAb	Ms	FACS, IHC, IHC-Fr, IP
GTX102111	CD44 antibody	Rb pAb	Hu, Ms	ICC/IF, IHC-P, WB
Ⓢ GTX76413	CD49f antibody [NK1-GoH3]	Rat mAb	Ms, Dog, Mk, Hu	Blocking, FACS, IHC, IHC-Fr, IP, Functional Assay
Ⓢ GTX62092	CD8 antibody [EP1150], C-term	Rb mAb	Hu	FACS, ICC/IF, IHC, IHC-P, IP, WB
GTX61477	CD8 antibody [EP1150Y], C-term	Rb mAb	Hu	ICC/IF, IHC, IHC-P, WB
GTX62252	CD90 antibody [EPR3133], N-term	Rb mAb	Hu	ICC/IF, IHC-P, WB
GTX116200	Ctip1 antibody	Rb pAb	Hu	ICC/IF, IHC-P, WB
GTX112765	CTLA4 antibody	Rb pAb	Hu	WB
GTX14016	EPO antibody	Chk pAb	Hu, Ms, Rat	ELISA, WB



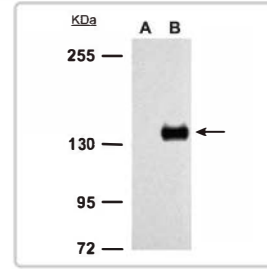
IL18 (GTX101368):
IHC analysis using IL18 antibody (GTX101368) on the paraffin-embedded A549 xenograft.



Interferon alpha 2 (GTX108284):
IHC analysis using Interferon alpha 2 antibody (GTX108284) on the paraffin-embedded CL 1-5 xenograft.



TLR4 (GTX75740):
FACS analysis using TLR4 antibody (GTX75740) on human peripheral blood monocytes

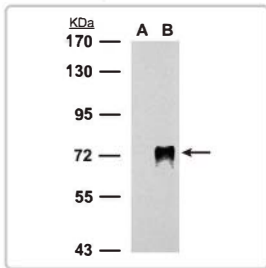
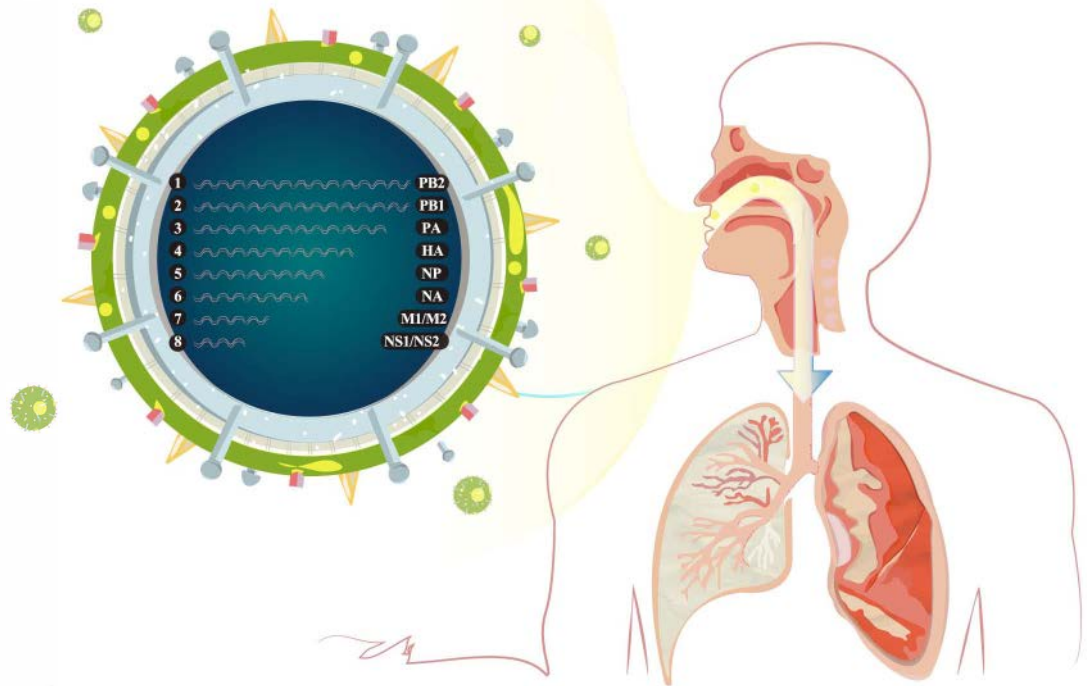


TLR7 (GTX125910):
WB analysis using TLR7 antibody (GTX125910) on 293T cells. Cells were either (A) nontransfected or (B) transfected with TLR7.

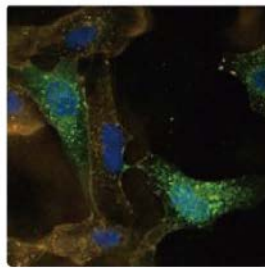
Citation

Cat. No.	Product Name	Host & Clonality	Reactivity	Application
GTX114076	Granulins antibody	Rb pAb	Hu	ICC/IF, IHC-P, WB
GTX112962	Haptoglobin antibody	Rb pAb	Hu	ELISA, WB
GTX101277	HMGB1 antibody	Rb pAb	Hu, Ms, Rat	IHC-P, WB
GTX628834	HMGB1 antibody [GT383]	Ms mAb	Hu, Ms, Rat	IHC-P, WB
GTX100042	Iba1 antibody	Rb pAb	Hu, Ms	IHC, IHC-P, WB
GTX101368	IL18 antibody [N1C3]	Rb pAb	Hu	ELISA, IHC-P, WB
GTX108284	Interferon alpha 2 antibody [C1C3]	Rb pAb	Hu	ICC/IF, IHC-P, WB
GTX62132	IRF3 (phospho Ser386) antibody [EPR2346]	Rb mAb	Hu	ICC/IF, WB
GTX61275	Lyn (phospho Tyr396) antibody [EP503Y]	Rb mAb	Hu	FACS, WB
GTX62819	Lysozyme C antibody [EPR2994(2)]	Rb mAb	Hu, Ms	ICC/IF, IHC-M, IHC-P, IP, WB
GTX110256	MX1 antibody [N2C2], Internal	Rb pAb	Hu	ICC/IF, IHC-P, WB
GTX22722	NFAT1 antibody [25A10.D6.D2]	Ms mAb	Hu, Ms, Rat	GSA, ICC/IF, IHC-F, IP, WB, ChIP assay
GTX102698	NF-E2 antibody [N1C3]	Rb pAb	Hu, Ms	IP, WB, ChIP-seq
GTX62954	p67phox / NCF2 antibody [EPR5064]	Rb mAb	Hu, Ms, Rat	ICC/IF, IHC-M, IHC-P, IP, WB
GTX110218	PLA2G4A antibody	Rb pAb	Hu, Ms	ICC/IF, IHC-P, WB
GTX62163	RUNX1 antibody [EPR3099], C-term	Rb mAb	Hu, Ms	FACS, ICC/IF, IHC-P, IP, WB
GTX104825	TFE3 antibody [N1], N-term	Rb pAb	Hu	ICC/IF, IHC-P, WB
GTX125909	TLR4 antibody	Rb pAb	Hu	IHC-P, WB
GTX75740	TLR4 antibody [HTA125]	Ms mAb	Hu, Gpig, Pig, RMK, Cat	Blocking, FACS, ICC/IF, IP, WB, Functional Assay
GTX125910	TLR7 antibody	Rb pAb	Hu	IHC-P, WB
GTX110807	ZC3H12A antibody[N3C3]	Rb pAb	Hu, Ms	ICC/IF, IHC, WB

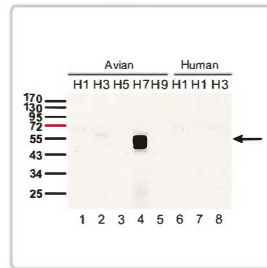
Infectious Diseases



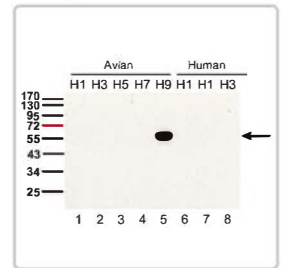
Influenza A Virus HA H1N1 (GTX127357): WB analysis using Influenza A Virus HA H1N1 antibody (GTX127357) on DF1 cell lysates. Cell were infected by either (A) mock or (B) WSN virus.



Influenza A Virus HA H1N1 (GTX127357): ICC analysis using Influenza A Virus HA H1N1 antibody (GTX127357; green) on Vero cells infected by A/WSN/33 virus.



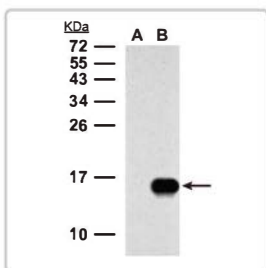
Influenza A Virus HA H7N7 (GTX127303): WB analysis using Influenza A Virus HA H7N7 antibody (GTX127303) on MDCK cell lysates.



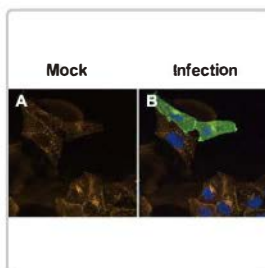
Influenza A Virus HA H9N2 (GTX127305): WB analysis using Influenza A Virus HA H9N2 antibody (GTX127305) on MDCK cell lysates.

Citation

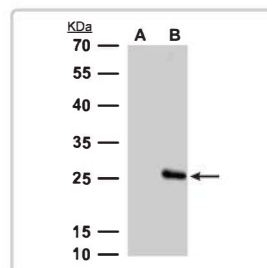
Cat. No.	Product Name	Host & Clonality	Reactivity	Application
GTX127357	Influenza A Virus H1N1 Hemagglutinin (HA) antibody	Rb pAb	Influenza A virus (H1N1)	ICC/IF, WB
GTX127295	Influenza A Virus H1N1 Hemagglutinin (HA) antibody	Rb pAb	Influenza A virus	WB
GTX629750	Influenza A Virus H1N1 Hemagglutinin (HA) antibody [GT223]	Ms mAb	Influenza A virus (H1N1)	WB
GTX629696	Influenza A Virus H1N1 Neuraminidase (NA) antibody [GT288]	Ms mAb	Influenza A virus (H1N1)	WB
GTX127303	Influenza A Virus H7N7 Hemagglutinin (HA) antibody	Rb pAb	Influenza A virus	WB
GTX127305	Influenza A Virus H9N2 Hemagglutinin (HA) antibody	Rb pAb	Influenza A virus	WB



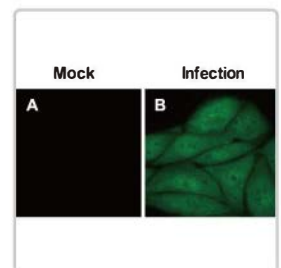
Influenza A Virus M2 (GTX125951): WB analysis using Influenza A Virus M2 antibody (GTX125951) on DF1 cell lysates. Cell were infected by either (A) mock or (B) influenza A virus.



Influenza A Virus M2 (GTX125951): ICC analysis using Influenza A Virus M2 antibody (GTX125951; green) on Vero cells. (A) mock control. (B) Influenza A Virus infection.



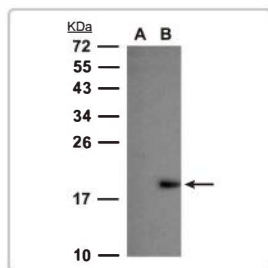
Influenza B Virus M (GTX128536): WB analysis using Influenza B Virus M antibody (GTX128536). (A) non-infected medium. (B) virus-contained medium.



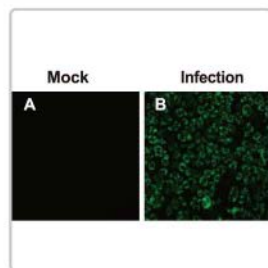
Influenza B Virus NP (GTX629883): ICC analysis using Influenza B Virus NP antibody (GTX629883) on MDCK cells. (A) mock control. (B) Influenza B Virus infection.

Citation

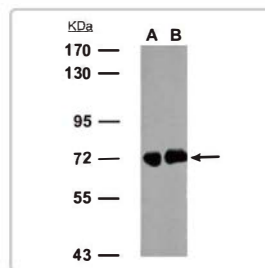
Cat. No.	Product Name	Host & Clonality	Reactivity	Application
GTX125928	Influenza A Virus M1 antibody	Rb pAb	Influenza A virus	WB
GTX125951	Influenza A Virus M2 antibody	Rb pAb	Influenza A virus	ICC/IF, WB
GTX125989	Influenza A Virus NP antibody	Rb pAb	Influenza A virus	ICC/IF, WB
GTX629544	Influenza A Virus NP antibody [GT778]	Ms mAb	Influenza A virus (H1N1)	WB
GTX125990	Influenza A Virus NS1 antibody	Rb pAb	Influenza A virus	ICC/IF, WB
GTX125953	Influenza A Virus NS2 antibody	Rb pAb	Influenza A virus	WB
GTX125932	Influenza A Virus PA antibody	Rb pAb	Influenza A virus	ICC/IF, WB
GTX125926	Influenza A Virus PB2 antibody	Rb pAb	Influenza A virus	ICC/IF, WB
GTX128543	Influenza B Virus Hemagglutinin (HA) antibody	Rb pAb	-	WB
GTX128542	Influenza B Virus Hemagglutinin (HA) antibody	Rb pAb	-	WB
GTX128536	Influenza B Virus M antibody	Rb pAb	-	WB
GTX128539	Influenza B Virus NP antibody	Rb pAb	Influenza B virus	WB
GTX128538	Influenza B Virus NP antibody	Rb pAb	Influenza B virus	ICC/IF, WB
GTX629883	Influenza B Virus NP antibody [GT382]	Ms mAb	Influenza B virus	ICC/IF, WB



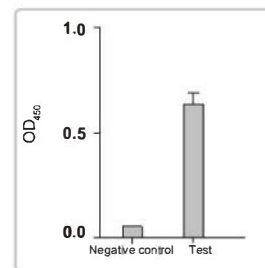
Capsid Protein (GTX103343):
WB analysis using Capsid protein antibody (GTX103343) on BHK-21 cell lysates. Cell were infected by either (A) mock or (B) Dengue virus 2.



Envelope Protein (GTX127277):
ICC analysis using Envelope protein antibody (GTX127277) on BHK-21 cells infected by either (A) mock or (B) Dengue virus 2.



H. p urease B (GTX124109):
WB analysis using H. pylori antibody (GTX124109). (A) 0.5 µg of helicobacter pylori. (B) 1 µg of helicobacter pylori.

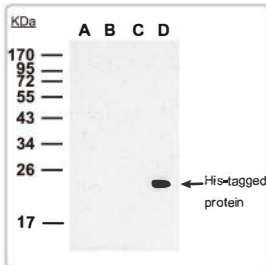


Urease B (GTX627292):
ELISA analysis using Urease B antibody (GTX627292).

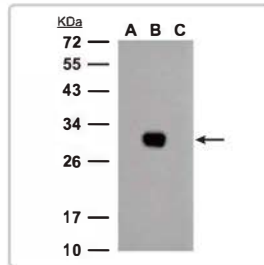
Citation

Cat. No.	Product Name	Host & Clonality	Reactivity	Application
GTX127984	Avian Influenza A Virus H5N1 Neuraminidase (NA) antibody	Rb pAb	Influenza A virus	WB
GTX127299	Avian Influenza A Virus H5N3 Hemagglutinin (HA) antibody	Rb pAb	Influenza A virus	WB
GTX103343	Capsid Protein (Dengue virus) antibody	Rb pAb	DEN	ICC/IF, WB
GTX29202	Dengue virus 1, 2, 3 & 4 antibody [D1-11(3)]	Ms mAb	DEN	Dot, ELISA, WB
GTX127277	Envelope protein (Dengue virus) antibody	Rb pAb	DEN	ICC/IF, WB
GTX629116	Envelope protein (Dengue virus) antibody [GT214]	Ms mAb	DEN	ICC/IF, WB
GTX124109	H. p urease B antibody	Rb pAb	H. p	IHC-P, WB
GTX124110	H. p urease B antibody	Rb pAb	H. p	ELISA, WB
GTX103346	NS1 (Dengue virus 2) antibody	Rb pAb	DEN 2	ICC/IF, WB
GTX124280	NS1 (Dengue virus) antibody	Rb pAb	DEN	ICC/IF, WB
GTX124246	NS2B (Dengue virus) antibody	Rb pAb	DEN	ICC/IF, WB
GTX124252	NS3 (Dengue virus) antibody	Rb pAb	DEN	ICC/IF, WB
GTX629477	NS3 (Dengue virus) antibody [GT2811]	Ms mAb	DEN	ICC/IF, WB
GTX124249	NS4A (Dengue virus) antibody	Rb pAb	DEN	WB
GTX103349	NS4B (Dengue virus) antibody	Rb pAb	DEN	ICC/IF, WB
GTX629446	NS5 (Dengue Virus 2) antibody [GT353]	Ms mAb	DEN	ICC/IF, WB
GTX103350	NS5 (Dengue virus) antibody	Rb pAb	DEN	ICC/IF, WB
GTX128093	PrM (Dengue virus) antibody	Rb pAb	DEN	WB
GTX107684	SART3 antibody [C3], C-term	Rb pAb	Hu	ICC/IF, IHC-P, WB
GTX627292	Urease B antibody [GT1263]	Ms mAb	H. p	ELISA, WB

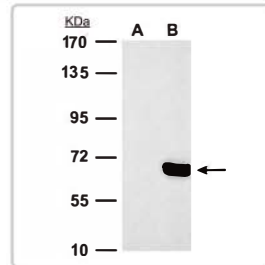
Epitope Tags and Internal Controls



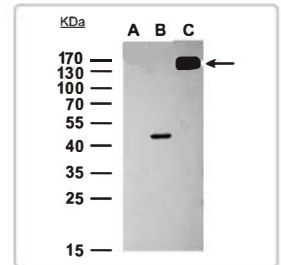
6x His (GTX115045):
WB analysis using 6x His antibody (GTX115045) on *E.coli* lysates. (A) non-transformed *E.coli*. (B) induced non-transformed *E.coli*. (C) non-induced *E.coli* harboring His-tag protein. (D) induced *E.coli* lysate harboring His-tag protein.



GFP (GTX113617):
WB analysis using GFP antibody (GTX113617) on 293T cell lysate. Cells were (A) non-transfected, (B) transfected with GFP protein, (C) transfected with RFP protein.



HA Tag (GTX115044):
WB analysis using HA Tag antibody (GTX115044) on HeLa cell lysates. Cells were either (A) non-transfected or (B) transfected with HA-tagged protein.

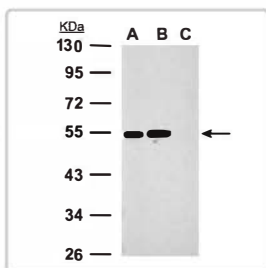


mCherry (GTX128509):
WB analysis using mCherry antibody (GTX128509) on 293T cell lysates. Cells were (A) non-transfected, (B) transfected with RFP protein, (C) transfected with mCherry-fused protein.

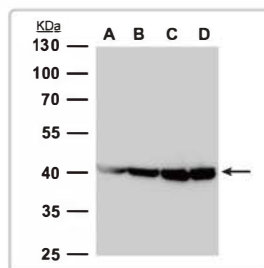
Epitope Tags

Citation

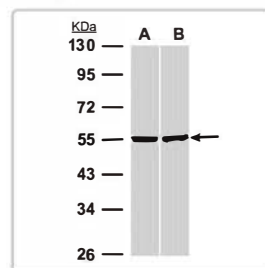
Cat. No.	Product Name	Host & Clonality	Reactivity	Application
GTX115045	6x His antibody	Rb pAb	Other	ELISA, IP, WB
GTX628921	6x His antibody [GT161]	Ms mAb		ELISA, WB
GTX628914	6x His antibody [GT359]	Ms mAb		ELISA, ICC/IF, IP, WB
GTX82562	DDDDK antibody [FG4R]	Ms mAb	Other	ELISA, ICC/IF, IHC, IP, WB
Ⓢ GTX26556	GFP antibody	Rb pAb	Other	ELISA, ICC/IF, IHC-Fr, IHC-P, IP, WB
Ⓢ GTX113617	GFP antibody	Rb pAb	Other, Hu	ICC/IF, IHC, IP, WB, IHC-Wm
GTX110736	GST antibody	Rb pAb	Other	IP, WB
Ⓢ GTX70195	GST tag antibody [3G10]	Ms mAb		IP, WB
Ⓢ GTX29110	HA tag antibody	Rb pAb		ELISA, ICC/IF, IP, WB
Ⓢ GTX115044	HA Tag antibody	Rb pAb	Other	ICC/IF, IP, WB
GTX128509	mCherry antibody	Rb pAb	Other	IP, WB
Ⓢ GTX29106	Myctag antibody	Rb pAb		CC, ELISA, ICC/IF, IHC, IM, IP, WB
Ⓢ GTX20032	Myctag antibody [9E10]	Ms mAb	Hu	ELISA, FACS, ICC/IF, IHC-Fr, IHC-P, IP, WB



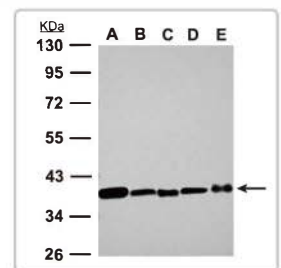
alpha Tubulin 1A (GTX109832):
WB analysis using tubulin 1A antibody (GTX109832) on HeLa cell lysates. (A) whole cell lysate/ extract. (B) cytosol fraction (C) nucleus fraction



beta-Actin (GTX110564):
WB analysis using beta-actin antibody (GTX110564) on (A) 293T, (B) A431, (C) HeLa, (D) HepG2 cell lysates



beta Tubulin (GTX101279):
WB analysis using beta-tubulin antibody (GTX101279) on (A) 293T, (B) H1299 cell lysates



GAPDH (GTX100118):
WB analysis using GAPDH antibody (GTX100118) on (A) 293T cell lysates, (B) NIH-3T3 cell lysates, (C) mouse brain extract (D) PC-12 cell lysates (E) rat brain extract.

Internal Controls

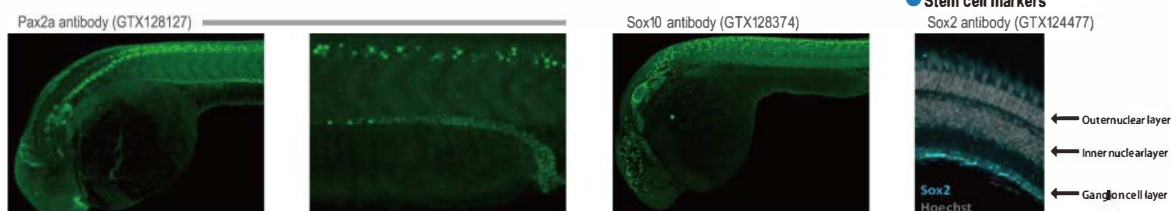
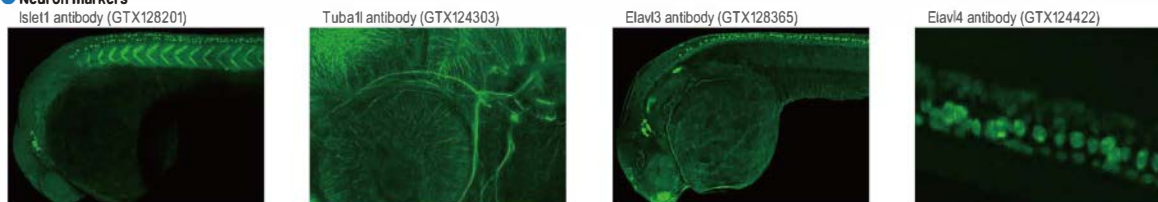
Citation

Cat. No.	Product Name	Host & Clonality	Reactivity	Application
● GTX112141	alpha Tubulin 4a antibody	Rb pAb	Hu, Ms, Dm, Rat	ICC/IF, IHC-P, WB
GTX102078	alpha Tubulin antibody	Rb pAb	Hu, Ms, Rat	ICC/IF, IHC-P, WB
GTX628802	alpha Tubulin antibody [GT114]	Ms mAb	Hu, Ms, Dm, Rat, Zfish	ICC/IF, IHC-P, WB
● GTX110564	beta Actin antibody	Rb pAb	Hu, Ms, Dm, Rat	ICC/IF, IHC-P, WB
GTX629630	beta Actin antibody [GT5512]	Ms mAb	Hu, Ms, Rat, Dm, Gt, Rb, Zfish, Yeast	ICC/IF, WB
● GTX101279	beta Tubulin antibody	Rb pAb	Hu, Ms, Rat	ICC/IF, IHC-P, WB
GTX127271	Cre antibody	Rb pAb	Other	WB
GTX125848	Firefly Luciferase antibody	Rb pAb	Firefly	WB
● GTX100118	GAPDH antibody	Rb pAb	Hu, Ms, Rat	ICC/IF, IHC-P, WB
● GTX627408	GAPDH antibody [GT239]	Ms mAb	Hu, Ms, Rat, Zfish, Yeast	ICC/IF, IHC-P, WB
GTX125851	Renilla Luciferase antibody	Rb pAb	INVT	WB
GTX109832	alpha Tubulin 1A antibody	Rb pAb	Hu, Ms, Dm, Rat	ICC/IF, IHC-P, WB

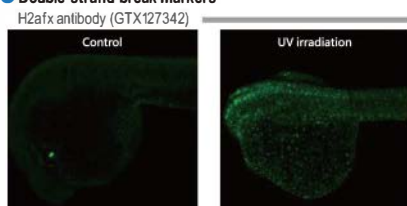
Zebrafish

Tissue Specific Markers for Immunocytochemistry

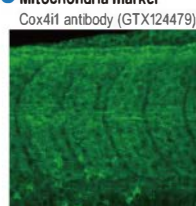
● Neuron markers



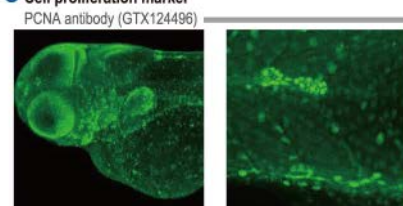
● Double-strand break markers



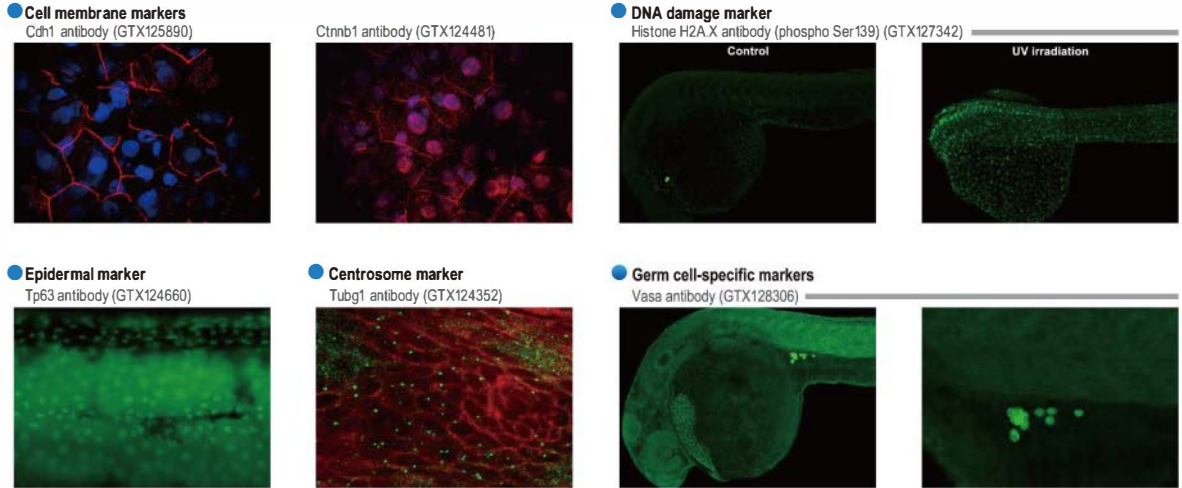
● Mitochondria marker



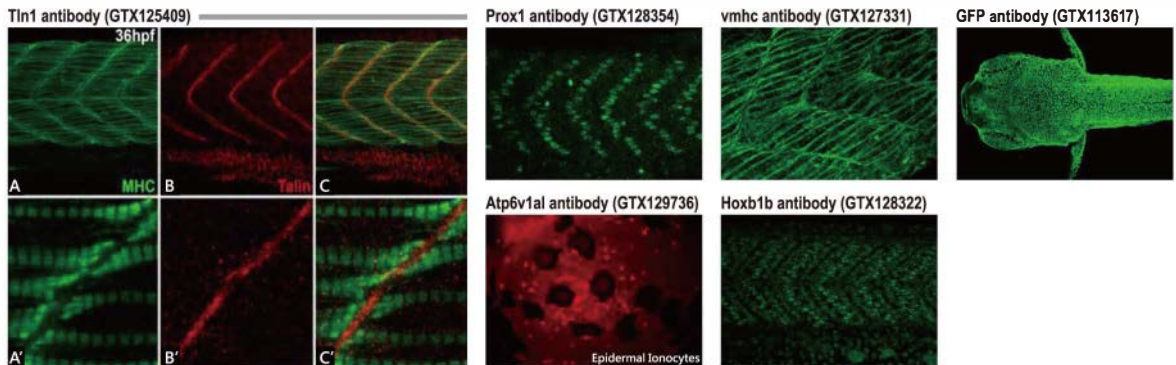
● Cell proliferation marker



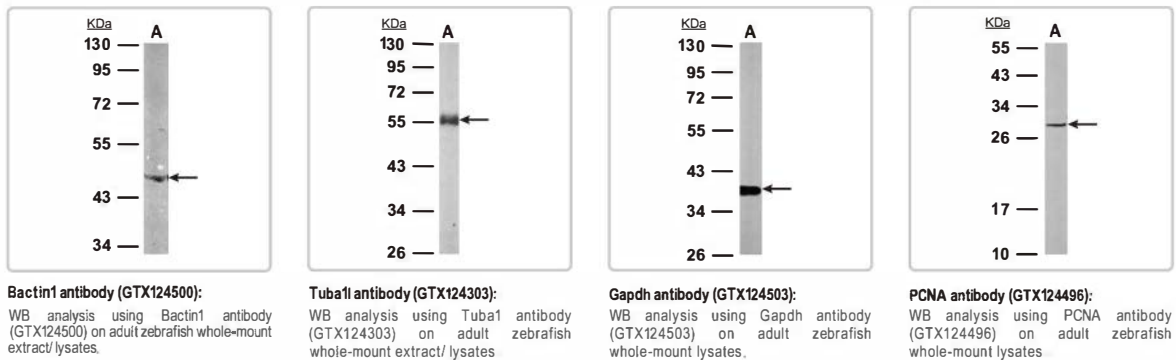
Tissue Specific Markers for Immunocytochemistry



Additional Targets for Whole Mount Immunocytochemistry



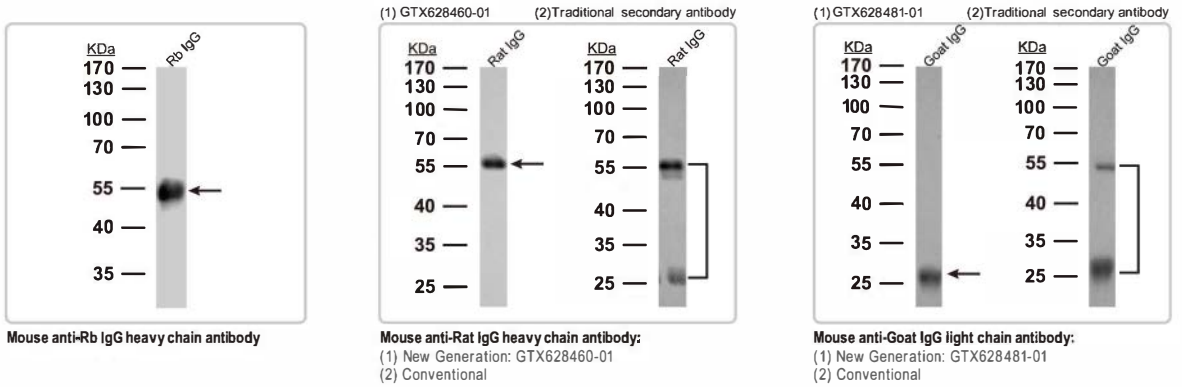
Positive Controls for Western Blotting



Citation

Cat. No.	Product Name	Host & Clonality	Reactivity	Application
GTX124504	Acta2 antibody	Rb pAb	Zfsh	IHC-P, WB
GTX124366	Acta2antibody	Rb pAb	Zfsh	IHC-P, WB, IHC-Wm
© GTX124302	Aldh1a2 antibody	Rb pAb	Zfsh	WB, IHC-Wm
GTX129736	Atp6v1al antibody	Rb pAb	Zfsh	IHC-Wm
GTX124500	Bactin1 antibody	Rb pAb	Zfsh	IHC-P, WB
GTX124365	Cond1 antibody	Rb pAb	Zfsh	IHC-Fr, IHC-P, WB
GTX125890	Cdh1 antibody	Rb pAb	Zfsh	IHC-Wm
GTX124368	Col1a1a antibody	Rb pAb	Zfsh	IHC-P, WB
GTX124479	Cox4i1 antibody	Rb pAb	Zfsh	IHC-P, WB, IHC-Wm
GTX124481	Ctnnb1 antibody	Rb pAb	Zfsh	ICC/IF, IHC-P, WB
GTX128365	Elav3 antibody	Rb pAb	Zfsh	IHC-Wm
GTX124422	Elavl4 antibody	Rb pAb	Zfsh	IHC-P, WB, IHC-Wm
GTX124503	Gapdh antibody	Rb pAb	Zfsh	IHC-P, WB
© GTX113617	GFP antibody	Rb pAb	Other	ICC/IF, IHC, IP, WB, IHC-Wm
GTX127342	Histone H2A.X (phospho Ser139) antibody	Rb pAb	Zfsh	IHC, IHC-P, IHC-Wm
GTX128322	Hoxb1b antibody	Rb pAb	Zfsh	IHC-Wm
GTX124472	Ikf antibody	Rb pAb	Zfsh	IHC-P, WB, IHC-Wm
GTX128201	Isl1 antibody	Rb pAb	Zfsh	IHC-Wm
GTX124420	Lcp1 antibody	Rb pAb	Zfsh	IHC-P, WB
GTX128295	Mafba antibody	Rb pAb	Zfsh	IHC-Wm
GTX124771	Mtor antibody	Rb pAb	Zfsh	IHC-P, WB
GTX128135	p53 antibody	Rb pAb	Zfsh	WB, IHC-Wm
GTX128127	Pax2a antibody	Rb pAb	Zfsh	WB, IHC-Wm
GTX124496	Pcna antibody	Rb pAb	Zfsh	IHC-P, WB, IHC-Wm
GTX128354	Prox1 antibody	Rb pAb	Zfsh	IHC-Wm
GTX127328	Rab11b antibody	Rb pAb	Zfsh	IHC-P
GTX124492	Raraa antibody	Rb pAb	Zfsh	IHC-P, WB
GTX124559	Smad5 antibody	Rb pAb	Zfsh	IHC-P, WB
GTX124294	Sod2 antibody	Rb pAb	Zfsh	IHC-P, WB, IHC-Wm
GTX128374	Sox10 antibody	Rb pAb	Zfsh	IHC-Wm
GTX124477	Sox2 antibody	Rb pAb	Zfsh	IHC-Fr, WB
GTX125409	Tln1 antibody	Rb pAb	Zfsh	ICC/IF
GTX124660	Tp63 antibody	Rb pAb	Zfsh	IHC-P, WB, IHC-Wm
GTX124303	Tube1l antibody	Rb pAb	Zfsh	IHC-P, WB, IHC-Wm
© GTX124352	Tubg1 antibody	Rb pAb	Zfsh	ICC/IF, IHC-Fr, IHC-P, WB
GTX128306	Vasa antibody	Rb pAb	Zfsh	WB, IHC-Wm
GTX127331	Vmhc antibody	Rb pAb	Zfsh	IHC-Wm

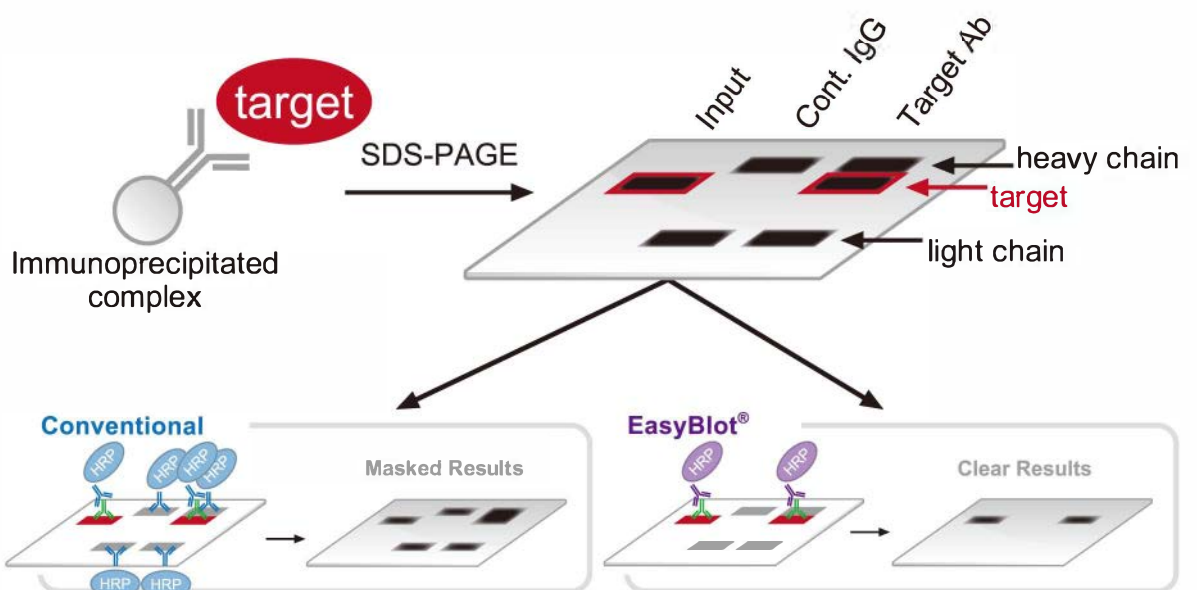
Secondary Antibodies



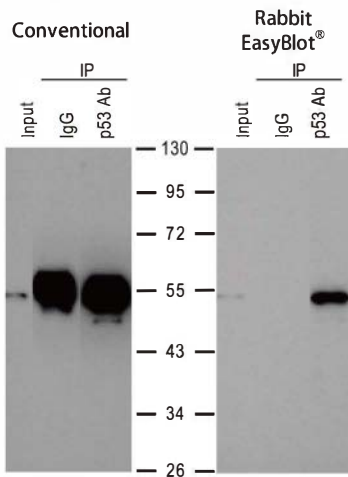
Cat. No.	Product Name
GTX213110-01	Rabbit IgG antibody (HRP)
GTX213110-02	Goat Anti Rabbit IgG (Biotin)
GTX213111-01	Mouse IgG antibody (HRP)
GTX213112-01	Mouse IgG antibody (HRP)
GTX213112-02	Rabbit Anti Mouse IgG (Biotin)
GTX224125-01	Rat IgG antibody (HRP)
GTX224126-01	Chicken IgY antibody (HRP)

Cat. No.	Product Name
GTX228416-01	Goat IgG antibody (HRP)
GTX628140-01	Mouse anti-Rabbit IgG Heavy chain antibody [GT881] (HRP)
GTX628142-01	Mouse anti-Rabbit IgG Light chain antibody [GT1779] (HRP)
GTX628460-01	Mouse anti-Rat IgG Heavy chain antibody [GT782] (HRP)
GTX628461-01	Mouse anti-Rat IgG (light chain) antibody [GT569] (HRP)
GTX628481-01	Mouse anti-Goat IgG Light chain antibody [GT25612] (HRP)
GTX628995-01	Mouse anti-goat IgG (heavy chain) antibody [GT1056] (HRP)

EasyBlot

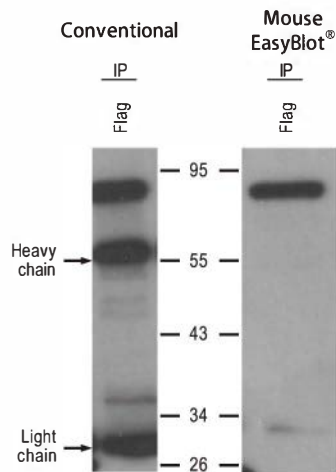


Rabbit EasyBlot®



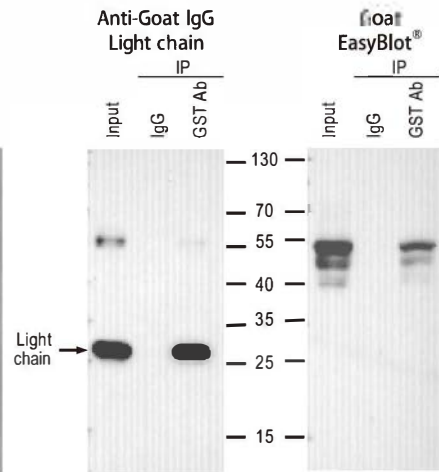
p53 was immunoprecipitated from HCT116 cell extracts using pre-immune IgG and rabbit anti-p53 antibody (GTX102965). The immunoprecipitated p53 was detected using the same primary antibody.

Mouse EasyBlot®



A Flag-tagged protein was immunoprecipitated from transfected cells using mouse anti-Flag antibody. The immunoprecipitated protein was detected using the same primary antibody.

Goat EasyBlot®



A GST-fusion protein was immunoprecipitated from transformed bacteria using control IgG and goat anti-GST antibody (GTX26633). The immunoprecipitated protein was detected using the same primary antibody.

Citation

Cat. No.	Product Name	Reactivity	Application
GTX628547-01	EasyBlot anti Goat IgG (HRP)	Gt	WB
GTX228910-01	EasyBlot anti-Goat IgG Kit (Optimized for Prot A/G)	Gt	WB
GTX221667-01	EasyBlot anti Mouse IgG (HRP)	Ms	WB
GTX221666-01	EasyBlot anti Rabbit IgG (HRP)	Rb	WB
GTX628474-01	EasyBlot anti Rat IgG (HRP)	Rat	WB
GTX628906-01	EasyBlot anti sheep IgG (HRP)	shp	WB
GTX225857-01	EasyBlot anti-Mouse IgG Kit (Optimized for Prot A/G)	Ms	WB
GTX225856-01	EasyBlot anti-Rabbit IgG Kit (Optimized for Prot A/G)	Rb	WB
GTX228909-01	EasyBlot anti-Rat IgG Kit (Optimized for Prot A/G)	Rat	WB
GTX228911-01	EasyBlot anti-Sheep IgG Kit (Optimized for Prot A/G)	shp	WB

GeneTex

www.genetex.com

International

Tel 886.3.6208988
Fax 886.3.6209098
Address 6F-2, No.89, Dongmei Rd., Hsinchu 300, Taiwan (R.O.C.)
E-mail info@genetex.com

USA

Tel 1.949.553.1900
Fax 1.949.309.2888
Address 2456 Alton Parkway, Irvine, CA 92606 USA
E-mail info@genetex.com

