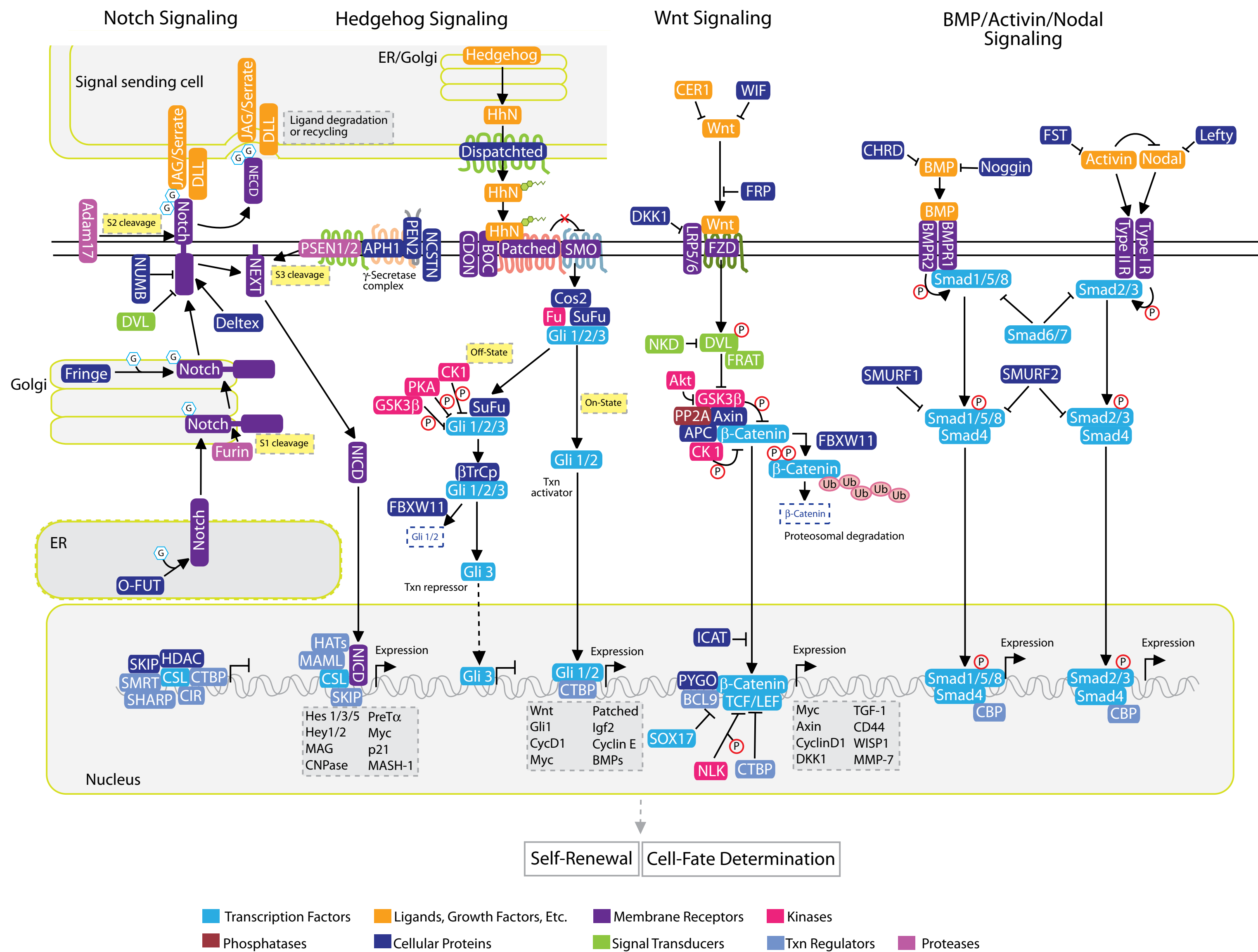
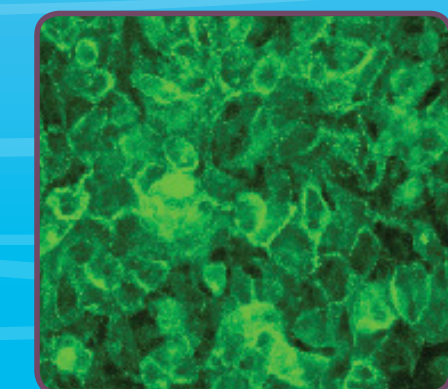


Stem Cell Signaling Pathway

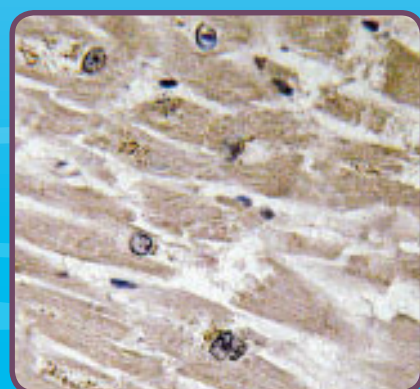


Stem Cell Antibodies

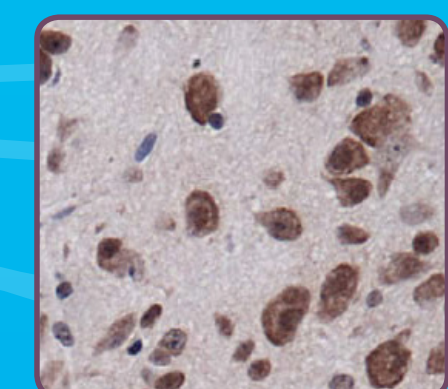
- 14-3-3 gamma
- Angiopoietin 1
- beta Catenin
- BMP
- CD31/PECAM1
- CD34
- c-Myc
- CXCR4
- DKK
- EGF
- EPH Receptor B3
- FGF
- GFAP
- IGF
- Jagged 1
- Musashi 1
- N Cadherin
- Nestin
- Noggin
- Notch
- OCT4
- PI3K
- PTEN
- SDF1
- SFRP
- SMAD4
- Sonic Hedgehog
- SOX2
- SSEA1
- SSEA3
- STRO-1
- TCF4
- TGF alpha
- TGF beta
- TIE2
- TRA-1-60 (R)
- TRA-1-81
- VEGF
- WIF1
- Wnt



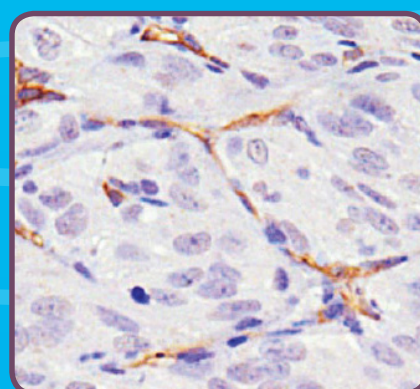
NB110-56924 • beta Catenin



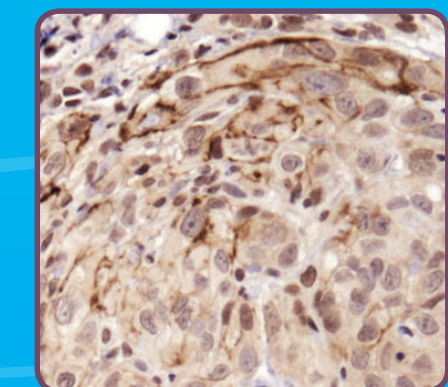
NBP1-19751 • BMP2



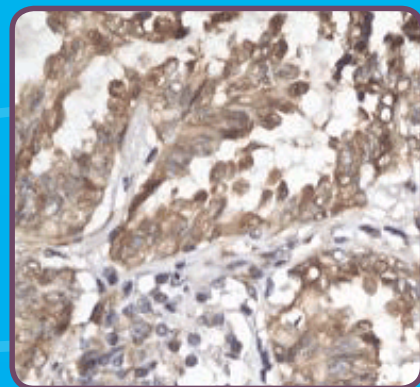
NBP1-71663 • CD31/PECAM1



NB600-1071 • CD34



NBP1-78292 • Notch1



NB110-56923 • Sonic Hedgehog

Stem Cell Marker Antibody Packs

Catalog#	Stem Cell Pack
NBP1-42823	Pluripotent Stem Cell Transcription Factor Antibody Pack
NBP1-42824	Essential iPSC Factor Antibody Pack
NBP1-42825	Human ESC Marker Antibody Pack
NBP1-42826	Neural Stem Cell Marker Antibody Pack

Stem Cell Lines

Catalog#	Stem Cell Lines
NBP1-49595	CL-01 Human B Cell Line
NBP1-41162	v6.5 Mouse Embryonic Stem Cell Line
NBA1-19349	DGCR8 Knockout Mouse Embryonic Stem Cell Line
NBP1-96751	Dicer Knockout Mouse Embryonic Stem Cell Line

Stem Cell Growth Support

Catalog#	Stem Cell Growth Support
U0019	Stematrix
NBP1-78301	Laminin Protein for Neurite Growth Substratum

Visit www.novusbio.com for a full list of Stem Cell Related Antibodies.