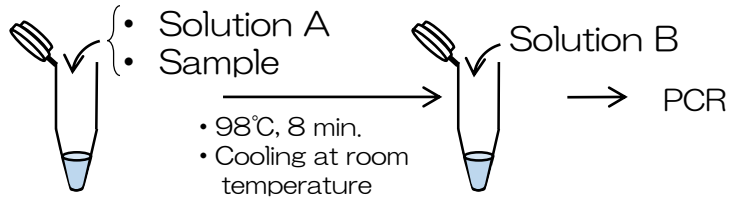


< Kaneka Easy DNA Extraction Kit version 2* >



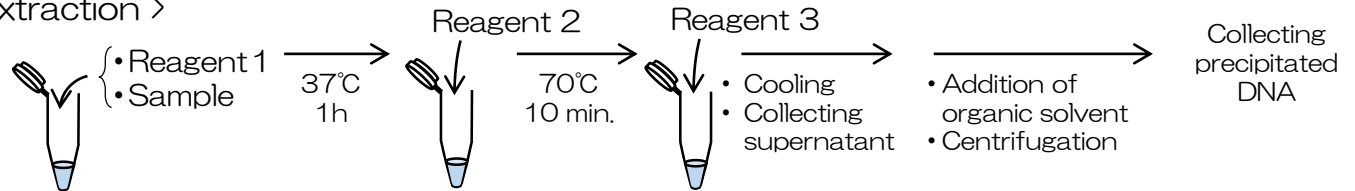
- Simple protocol
- 10 minute extraction
- Room temperature storable reagents

* “Kaneka Easy DNA Extraction Kit version 2” is for research use only.

< Other kit for yeast DNA extraction >

(Company A)

- ◆ Complex procedure
- ◆ More than one hour
- ◆ Storage at -20°C



< DNA extraction from yeast colony and following PCR >

Targets: two DNA fragments inserted into *Pichia pastoris* genome

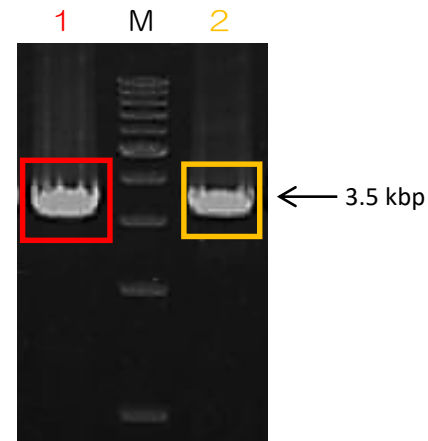


To confirm the DNA insertion, DNA extraction and PCR were performed.

Sample : DNA extracted from *Pichia pastoris* colonies

- 1: amplified DNA (Template: the upstream inserted DNA) (3.5 kbp)
- M: 1 kbp DNA ladder marker
- 2: amplified DNA (Template: the downstream inserted DNA) (3.5 kbp)

(Data obtained by our company)



Kaneka DNA Easy Extraction Kit version 2 successfully extracted DNA from yeast colonies and amplify DNA from the extract.