



ZF Plate

For more information : <http://www.funakoshi.co.jp/exports>

ZF Plate is 96 well plate for drug discovery screening by using zebrafish. You can easily align zebrafishes just put them into well and spin down.

Features

- Alignment rate : > 70%
- Glass bottom plate makes compound screening more efficiently and quantitatively.
- Quantitative Image Phenotype Analysis is possible by using High Contents Imaging System.
- High S/N ratio analysis data is available by aligned zebrafish.

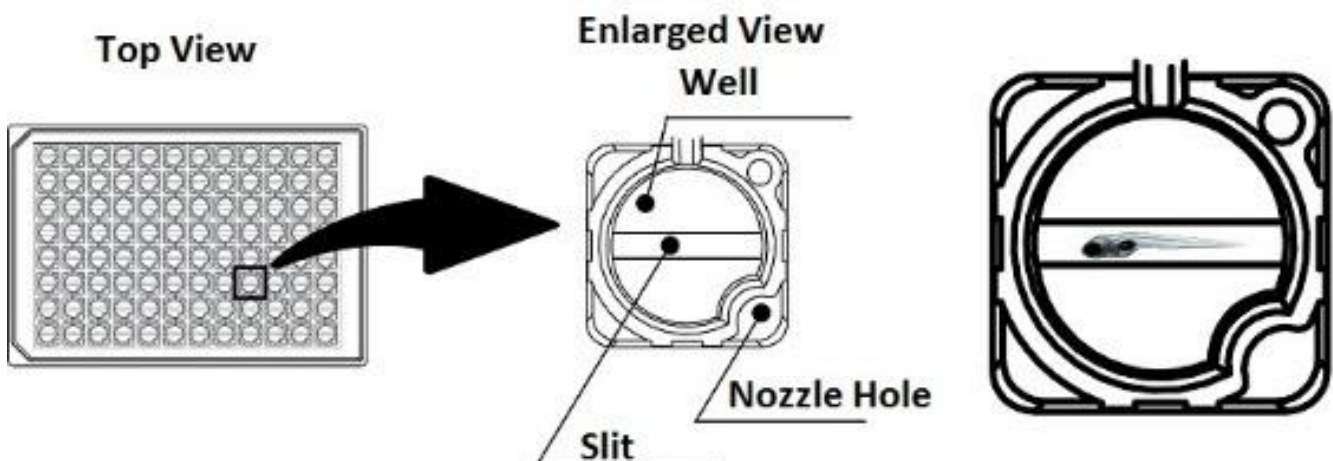
- ※ This plate is disposable.
- ※ Non – Autoclavable.



Specs

Plate Size (mm)	127.76 (W) x 85.48 (L) x 14.35 (H)
Plate Material / Color	Polystyrene / Black
Bottom Material / Thick (mm)	Silica Glass / 0.72
Weight (g)	Non-Cover : 72 With-Cover : 95
Temperature (°C)	0 - 40
Maximum loading amount per well (μl)	250
Sterilized / Unsterilized	Unsterilized

Product Overview



Procedure

Sample :

- Anesthetized zebrafish (young fish, 3 dpf – 6 dpf)

Required Instruments :

- Microplate Centrifuge (With flashing function)
- Micropipette (100 – 200 μ L and 1 mL, each one)
- Pipet tip (Wide mouth, low adsorption type recommended)

Protocol

1. Take zebra fish with anesthetic solution (75 μ L) by micropipette and put them into well slowly.
2. Flash the plate (200 - 250G) by Microplate Centrifuge.
3. Monitor the plate by High Contents Imaging System.
4. After monitoring, add adequate anesthetic solution and take zebrafish by micropipette.

Example Data

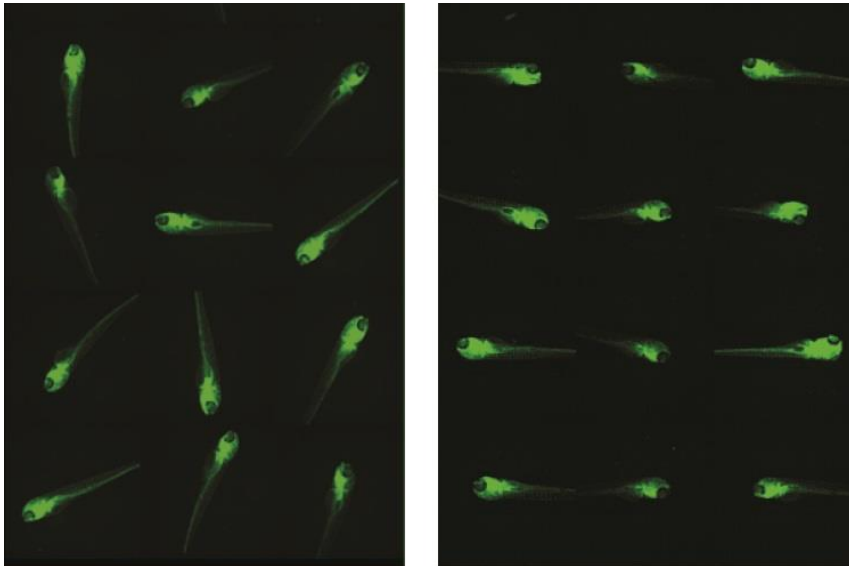


Fig. Monitoring by High Contents Imaging System

Left : General 96 well microplate.

Right : ZF Plate

Product Information

[Manufacturer : HDK]

Product Name	Size	Code	Storage
ZF Plate	10 pcs	HDK-ZFA101-01a	RT

NOTE

※ All products here are research use only, not for diagnostic use.
※ Specs might be changed for improvement without notice.

※ Company name and product name are trademark or registered mark.
※ Please contact your local distributors for orders, quote request and inquiry.

Your Local Distributor

funakoshi Co., Ltd.

Address: 9-7 Hongo 2-Chome, Bunkyo-ku,
Tokyo 113-0033 JAPAN
Phone : +81-3-5684-6296
Fax : +81-3-5684-6297
Email : export@funakoshi.co.jp