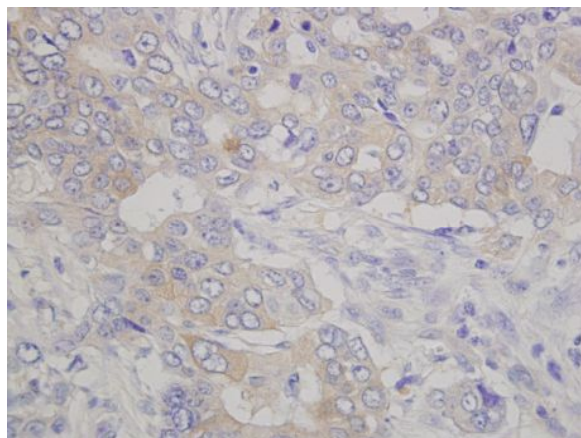


---

Catalog Number	: #FDV-0001
Product Name	: Anti-Lumican, Human, Rabbit-Poly
Formulation	: PBS (10mM Phosphate buffer, 0.15M NaCl (pH7.2))(0.3mg/ml)
Purification	: Affinity Purified
Cross Reactivity	: Human, Rat
Immunogen	: Synthetic Peptide (aa211-227 of Human Lumican)
Applications	: IHC-P: 1:200 to 1:2,000, Western Blotting: 1:1,000
Storage	: -20°C, Avoid freeze/thaw cycles.
Size	: 25 µl
Preservative	: 0.1% Sodium Azide

---

Lumican is a glycoprotein of 338 amino acids, which is a member of small leucine-rich proteoglycan (SLRP) family. This glycoprotein has small core proteins of approximately 40 kD and the core protein contains a central region of leucine-rich repeats flanked on either side by a disulfide-bonded domain. The central region of the molecule possesses four asparagine residues capable of participating in N-linked glycosylation, which regulates the assembly and diameter of collagen fibers. Lumican has an important role for such as cell proliferation, cell migration and cell adhesion. Recently, lumican overexpression has been reported in various cancer tissues, such as carcinoid tumor, breast, colorectal, neuroendocrine cell, uterine cervical, lung and pancreatic cancers.



Human pancreatic cancer (formalin-fixed, paraffin embedded) stained with human lumican antibody (#FDV-0001).

## Product Citations

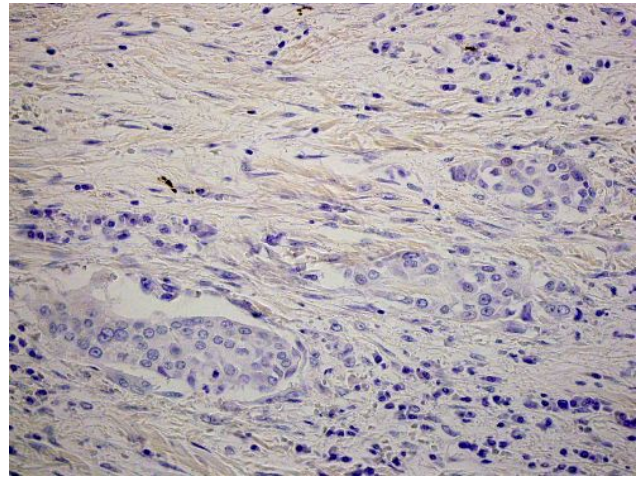
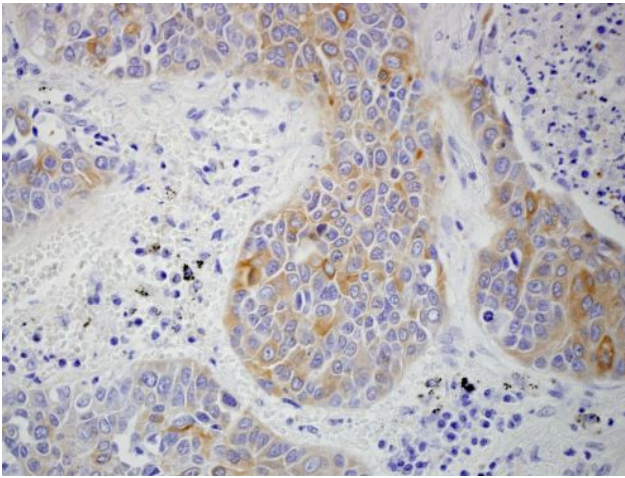
1. Yamamoto T, *et al.*, *Cancer Lett.* (2012) **320**, 31-39, [PMID: 22266188]
2. Ishiwata T, *et al.*, *Exp Mol Pathol.* (2010) **88**, 363-370. [PMID: 20138170]
3. Matsuda Y, *et al.*, *Int J Oncol.* (2008) **33**, 1177-1185 [PMID: 19020750]
4. Ishiwata T, *et al.*, *Oncol Rep.* (2007) **18**, 537-543 [PMID: 17671699]
5. Seya T, *et al.*, *Oncol Rep.* (2006) **16**, 1225-1230 [PMID: 17089042]
6. Shinji S, *et al.*, *Int J Oncol.* (2005) **26**, 873-880 [PMID: 15753980]
7. Kusafuka K, *et al.*, *J Pathol.* (2004) **203**, 953-960 [PMID: 15258999]
8. Ishiwata T, *et al.*, *Pathol Int.* (2004) **54**, 77-81 [PMID: 14720136]
9. Saika S, *et al.*, *Invest Ophthalmol Vis Sci.* (2003) **44**, 2094-2102 [PMID:12714648]
10. Naito Z, *et al.*, *Exp Mol Pathol.* (2003) **74**, 33-39 [PMID: 12645630]
11. Lu YP, *et al.*, *Pathol Int.* (2002) **52**, 519-526 [PMID: 12366811]
12. Naito Z, *et al.*, *Int J Oncol.* (2002) **20**, 943-948 [PMID: 11956587]
13. Onda M *et al.*, *Exp Mol Pathol.* (2002) **72**, 142-149 [PMID: 11890723]
14. Ping Lu Y, *et al.*, *J Pathol.* (2002) **196**, 324-330 [PMID: 11857496]
15. Qin H, *et al.*, *J Pathol.* (2001) **195**, 604-608 [PMID: 11745697]
16. Baba H, *et al.*, *Jpn Circ J.* (2001) **65**, 445-450 [PMID: 11348051]

**For research use only.  
Not for use in diagnostic procedures.**

---

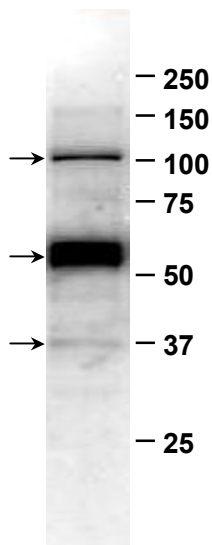
# Applications

## Immunohistochemistry



Human lung cancer (formalin-fixed, paraffin embedded) stained with human lumican antibody (#FDV-0001). Lumican is observed in cancer cells (left image), and interstitium (right image) in lung squamous cell carcinoma

## Western Blotting



Western blot analysis on A549 human lung cancer cell lysate using human lumican antibody (#FDV-0001). 37KDa band of lumican core protein and glycosylated forms of lumican are observed.

 **Funakoshi Co.,Ltd.**

9-7 Hongo 2-chome, Bunkyo-ku, Tokyo 113-0033, Japan  
<http://www.funakoshi.co.jp/> e-mail: [export@funakoshi.co.jp](mailto:export@funakoshi.co.jp)